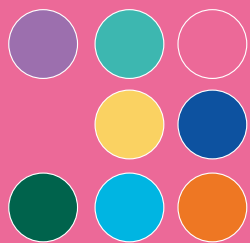


Free



# HAMPSHIRE

## open studios



# 2022

Saturday 20th - Bank Holiday Monday 29th August  
[www.hampshireopenstudios.org.uk](http://www.hampshireopenstudios.org.uk)

# Welcome to Hampshire Open Studios 2022

Hampshire Open Studios (HOS) is an annual art trail where the visiting public can meet artists in their studios and galleries. In the week leading up to Bank Holiday Monday in August, over 290 studios, galleries, artists and art groups open their doors to exhibit original artwork to the visiting public.

*Please check our website for much more detailed maps and we will be publishing mini-routes with suggested ideas for days out too.*

Our artists are very much looking forward to inviting you once again to their studios and galleries. They will be making every effort for your visit to be enjoyable and safe. All information in this brochure is correct at the time of printing. Any changes to opening times will be on our website. So please do check that to help you make the most of your days out!

If you have any comments to help make the event more enjoyable next year please do not hesitate to contact me.

Lesley Self, email: [hampshireopenstudios@gmail.com](mailto:hampshireopenstudios@gmail.com)

## Visiting:

- Please check opening times and any access details before setting out - it might be advisable to contact the individual venues for specific advice if needed

**If the date is shaded out on the calendar bar the studio is closed on that day**

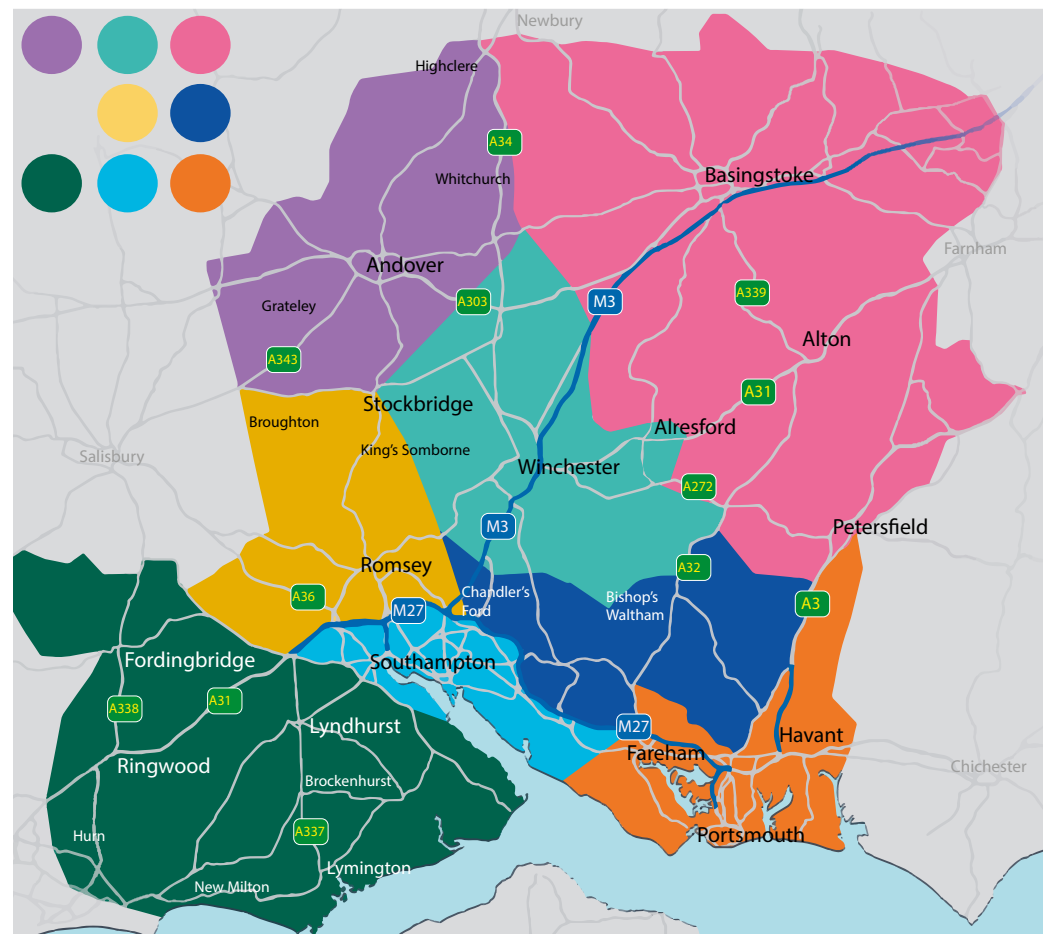
- The brochure maps are for approximate guide only, please see our website for more detailed positions or use the postcodes to help guide you round
- Look out for the pink direction arrows or banners at venue entrances
- Many artists cannot take credit cards

## Liability

The organisers of the Hampshire Open Studios, participating venues and artists cannot accept liability for any loss, damage or injury sustained by any member of the public while visiting any of the Hampshire Open Studios art trail, venue or events. The public do so at their own risk.

**Cover images:** (Front main) Emma Lowres venue 150; (Back page top left to bottom right) Jen Best 130, Granary Studio 135, Rushes Road Creatives 197, Roake Farm 109, Sophie & Sue 218, Samantha English 58, Seaview Artisans 243, Southern Nature Art Exhibition 283

[www.hampshireopenstudios.org.uk](http://www.hampshireopenstudios.org.uk)



1-88

New Forest

89-113

Romsey, Awbridge, Stockbridge, Broughton

114-132

Andover, Highclere

133-156

Winchester, Alresford, Upham, Owslebury

157-201

Basingstoke, Alton & Petersfield

202-223

Swanmore, Bishop's Waltham, Chandler's Ford, Eastleigh

224-250

Southampton, Shirley, West End, Netley Abbey, Warsash

251-292

Portsmouth, Gosport, Fareham, Lee-on-the-Solent

## Prize draw 2022 to win £100 artist voucher

Tell us about your visits and experiences of HOS this year; also collect, from different venues, 3 artist signatures below to enter our prize draw to win a voucher of £100 to spend with a HOS artist of your choice.

What venues did you visit?	
How did you find out about HOS?	
What advertising, publicity, social media have you seen?	
What do you think of the brochure layout?	
Did you use the website and is it easy to find what you wanted to know?	
Any suggestions to help our planning for next year....	

Artist 1	Artist 2	Artist 3

Scan and email to: [hampshireopenstudios@gmail.com](mailto:hampshireopenstudios@gmail.com) or post to Hampshire Open Studios, 1a Church Orchard, Sutton Waldron, DT11 8PD to arrive by 16 September 2022. The winner will be notified and announced on our website:

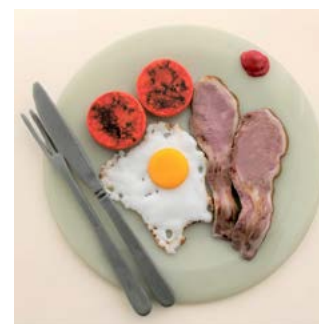
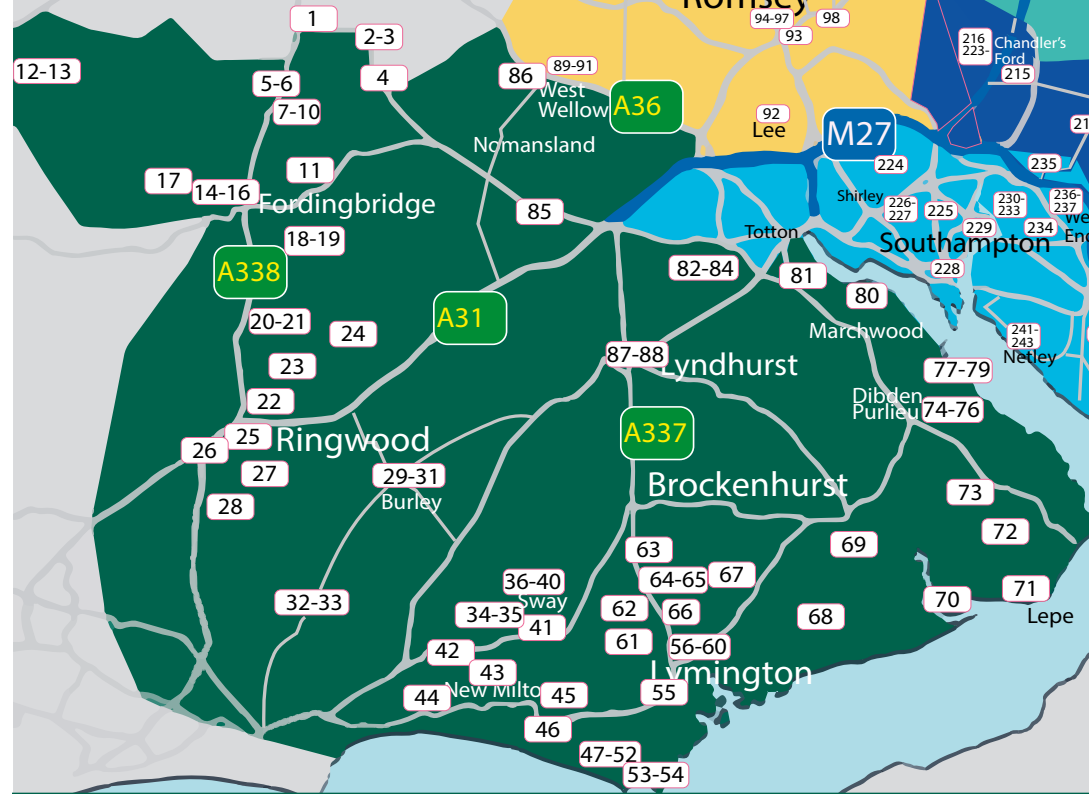
[www.hampshireopenstudios.org.uk](http://www.hampshireopenstudios.org.uk)

Your name		Email	
Address			

*This is used only to notify the winner, we won't keep contact details without your permission below.*

If you would like to be sent details about HOS 2023 ☐ Yes please ☐ No thanks

We don't share your information with others & you can unsubscribe at anytime by email or post.



### 1 Lynn Purcell

Glass

Glass dishes, wall hangings, landscapes, pendants, boats/beach huts on wood, clocks, cards, slumped bottle items, plus more sculptural pieces. Tea/cake by the river (donations to Salisbury Hospital Breast Care Unit)

**The Corn Mill, High Street, Downton, SP5 3PE**  
01725 514487 [lynn@thecornmill.plus.com](mailto:lynn@thecornmill.plus.com)

*The Corn Mill is situated on the river bridge at the eastern end of Downton opposite the large former tannery building*

S S M T W T F S S M 10.30-5pm (or by appointment only on 22nd & 23rd)  
20 21 22 23 24 25 26 27 28 29 Steps & uneven surfaces Drive or street parking

### 2 Teresa Rogers & Viv Broughton

Painting, printmaking, wood

Over 200 paintings as well as prints, cards, hand painted lampshades, textile art and gift items from Teresa and beautiful wood turned items from Viv. Refreshments are available

**Sycamores, Grove Lane, Redlynch, SP5 2NR**

01725 514537 07920 162019 Instagram @teresarogersartist  
[teresarogers56@me.com](mailto:teresarogers56@me.com) <http://teresarogersart.com>

*From A36 turn towards Hamptworth, first right past golf club, keep straight to Redlynch, first on right. From Downton, through village, up the hill, turn left, last house on left.*

S S M T W T F S S M Open 10am-4pm  
20 21 22 23 24 25 26 27 28 29 Steps or slope In front or side of garage





### 3 Lucinda Nicholas & guest artists

Watercolours, jewellery, wood turning, pottery, glass & metal garden art

Lucinda Nicholas, Suzanne Ball, Paul Cooper, Bob Norman, George Shapland, Helen Southwell & Monica Wilson. Beautiful collections of watercolours, cushions, turned wood, glass, metal garden art and stoneware in unique designs along with handmade silver jewellery inspired by nature. Refreshments available in aid of charity.

**Hackamore House, Grove Lane, Redlynch, SP5 2NR**

07876 551622 lucindanicholas63@gmail.com

www.lucindanicholas.co.uk

From A36 turn towards Landford, turn right to Hamptworth & follow road to Redlynch, second house on left. From Downton, go through village & up the hill; turn left onto Bowers Hill, last house on right.

S	S	T	W	T	F	S	S	M
20	21	22	23	24	25	26	27	28
29								

Open 10am-4pm

Gravel, steps. No wheelchair access

Drive or layby parking



### 4 Zero Nine Textile Artists

Textiles, mixed media

We will be displaying our wide range of textile art. Fabric printing, hand & machine stitching, weaving and felting and more. Liz Tanner, A Tail of Yarn, is displaying sustainable, characterful hand spun yarn products.

**The Studio at Home Farm, Whiteshoot, Redlynch, SP5 2PR**

07551 224491

alisonhulmetextiles@gmail.com

facebook @ZeroNineTextileArtists09

From Downton or Cadnam direction take the B3080. Once in Woodfalls village follow directions to Whiteshoot. The Studio is signposted and is approx. 500yds, on the right.

S	S	M	T	W	T	F	S	S	M
20	21	22	23	24	25	26	27	28	29

Open 10am-5pm

Wheelchair accessible

Car park at rear



### 5 Hilary Bowen

Silver jewellery

Contemporary jewellery using pure silver which comes in a clay form, which after firing converts to pure solid silver. Combined with glass, gold and semi-precious stones. Regular classes available. (see website).

**1 Yew Tree Cottage, The Marsh, Breamore, SP6 2EL**

01725 512230 07501 066643

hilaryjbowen@btinternet.com www.silverclayjewellery.co.uk

From Fordingbridge take the A338 North towards Salisbury for 4 miles. Enter Breamore. Go past the Bat and Ball pub on the right, and turn left opposite the Village Hall. Yew Tree Cottage is the first thatched cottage on left. (Goose on roof!)

S	S	M	T	W	T	F	S	S	M
20	21	22	23	24	25	26	27	28	29

Open 11-5pm

Gravel drive, 1 step

Driveway parking

### 6 Richard Tratt

Painting

Oil paintings of Hampshire and Dorset - Landscapes, river & coastal views, New Forest & wildlife in habitat. A blend of impressionist & traditional style.

**Breamore Village Hall (Hulse Hall), Salisbury Road, Breamore, SP6 2EA**

01425 652100 / 07473 168948 rtratt@btinternet.com

www.richardtratt.co.uk

From Fordingbridge take A338 north towards Salisbury, at Breamore pass the Bat & Ball pub on the right, the Village hall is soon after on the right.

S						S	S	
21						27	28	

Open 10am-5pm

Disabled access

Hall car parking



### 7 Coach House Studio

Mixed, group

Wendy De Salis & Sarah Orchard showing functional and decorative ceramics, watercolour and mixed media paintings and prints, cards and books (signed by the author/illustrator). Variety, large and small.

**Knowle House, Grace Lane, Woodgreen, SP6 2BQ**

077290 33308 / 07818 054149 wendy1desalis@gmail.com

www.coachhousestudio.weebly.com

From Horse and Groom pub, take road leading up to Woodgreen Common. Turn right at the first fork, up Grace Lane (unmarked, single track). Take first entrance on the right, over cattle grid and straight ahead. Follow our pink signs.

		T	W	T	F	S	S	M
		23	24	25	26	27	28	29

Open 10am-5pm

Studio on 2 floors. Gravel & steps

Large driveway



### 8 Andrea Finn

Painting, ceramics, mixed media

Work past and present: Reflections on the themes of conflict, division, displacement and hope.

**Windhover Cottage, Brook Lane, Woodgreen, SP6 2AZ**

01725 513405 / 07821 265053

andreafeinnart@btinternet.com

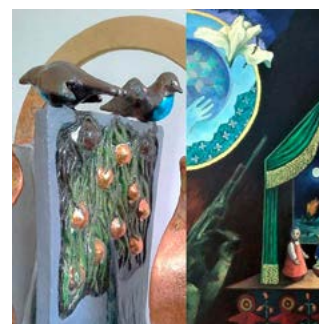
From Horse and Groom in Woodgreen turn right up the hill to postbox. Turn right into Brook Lane. From Godhill, turn right down Brook Lane. Follow pink arrows

				F	S	S	M
				26	27	28	29

Open 10am-5pm

Wheelchair access (phone for info)

Parking for 5 cars





**9 Pete & Nicky Gilbert, Roger Stephens,  
Paul Daniels & Yukari**

Painting, jewellery, sculpture, woodcraft

New Forest landscapes, Cornish seascapes, a unique range of agate, silver and Tibetan bead jewellery, woodcraft, prints, cards and more.

**10 Lower Densome Wood, Woodgreen, SP6 2BE**  
01725 512333 [pgilbertstudiogilbert@btinternet.com](mailto:pgilbertstudiogilbert@btinternet.com)  
[www.petegilbert.me.uk](http://www.petegilbert.me.uk)

*From the Horse & Groom in Woodgreen turn right up the hill to the post box on the Common turn left down the gravel track - follow the pink Arrows to No 10*



S	S	M	T	W	T	F	S	S	M
20	21	22	23	24	25	26	27	28	29

Open 11am-5pm

Gravel path to house & studio Plenty of space to park

**10 Nick & Syann with friends**

Group, mixed

Selected works by nationally renowned artist makers.

Robert Race automata, Syann van Niftrik jewellery, Bobbie Kociejowski hand weaving, Frances Marr ceramics and works on paper, Kathie Murphy jewellery, Nick Barberton wood.

**The Cottage, High Street, Woodgreen, SP6 2AR**  
01725 510364 / 07503 906366 [syann@syannvanniftrik.co.uk](mailto:syann@syannvanniftrik.co.uk)



[www.nickbarberton.com](http://www.nickbarberton.com) [www.roberttrace.co.uk](http://www.roberttrace.co.uk)  
[www.syannvanniftrik.co.uk](http://www.syannvanniftrik.co.uk) [www.bobbiekociejowski.com](http://www.bobbiekociejowski.com)  
[www.francesmarr.co.uk](http://www.francesmarr.co.uk) [www.kathiemurphy.co.uk](http://www.kathiemurphy.co.uk)

*At exit 1 off M27, take B3078 direction Fordingbridge. At Godshill, right turn, Woodgreen. Once in the village, follow the High Street till it curves left on the right at end of hedge turn right over cattle grid up track to The Cottage*

S	S	M	T	W	T	F	S	S	M
20	21	22	23	24	25	26	27	28	29

Open 10am-5pm

Rough track, 1 step Limited parking in drive. Or village hall





## 11 Take 10 Artists Group show, painting

An inspirational collection of paintings by this long standing art group. Framed originals and mounted work.

Margot Adams, Jill Bentley, Kate Charman, Lindsey Cole, Maureen Davies, Jackie Langfeld, Martin Slater, Gillian Smith, Virginia Whiting, Deirdre Whitworth, Joanna Williams.

**Godshill Village Hall, Godshill, SP6 2LP**

[www.take10artists.com](http://www.take10artists.com)

Godshill village hall is 2 miles east of Fordingbridge on B3078 (in the New Forest)  
The hall is next to the Fighting Cocks pub.

Open 11am-4pm

S	S			W	T	F	S	S	M
20	21			24	25	26	27	28	29

♿ Disabled access

P Hall car park



## 13 AIM Painting, ceramics, jewellery, sculpture, enamelling

Art in Martin offers a diverse range of high-quality painting and handmade craft from artists working locally. There will also be demonstrations at the weekends. Delicious refreshments available.

**Reads Farmhouse, Martin, Fordingbridge SP6 3LN**

07780 286467 [lizziefernier@aol.com](mailto:lizziefernier@aol.com)

From the A354 take Martin Drove End into the centre of Martin village. Reads Farmhouse is on Martin Drove End and has limited parking on a gravel drive in front of the barn.

Open 11am-5pm

S	S					F	S	S	M
20	21					26	27	28	29

♿ Gravel

P Limited parking on drive



**Lizzie Fernie** specialises in hand-built ceramics with superb ash glazes which she mixes in her studio using wood ash from the garden.

**Keith Seldon**, enameller and enamel artist, works for the top jewellery houses in London and has won many awards for his work.

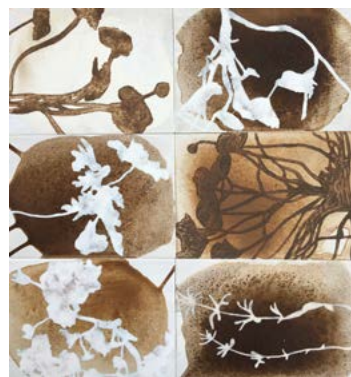
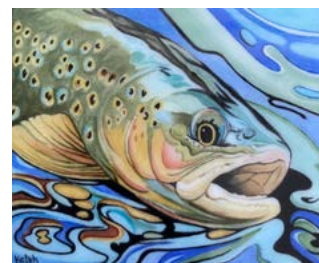
**Charlotte Burleigh** is an artist who centrally uses chalk pastels and oil paints to depict the chalk downland around her. She also paints and draws still life.

**Jessica Bourdon Smith's** oil portraits develop over a number of sittings with the subject, which allows for their deep character to emerge through the paint.

**Grant Walker** makes large platters and amphora. His ceramic pieces are often part-glazed to reveal the clay which would otherwise be hidden.

**Judi Glover** creates vibrant paintings that celebrate the beauty and colour of light in the landscape, still life and nature. [www.judiglover.co.uk](http://www.judiglover.co.uk)

**Heidi Donovan's** work generally concentrates on skies and light. Her work is an intuitive response to the unpredictable changes in British weather and the atmosphere it creates.



## 12 Sara Dudman Unearthing Cranborne Chase

Painting, mixed media

Painting with pigments made from the earth and rock of Cranborne Chase, with work by Sara and local communities. Find out how you can get involved with Chase and Chalke projects.

**Martin Club, Martin Drove End, Martin, Fordingbridge, SP6 3LR**

01725 517417 / 07880 788367  
[chaseandchalke@cranbornechase.org.uk](mailto:chaseandchalke@cranbornechase.org.uk)  
[www.cranbornechase.org.uk](http://www.cranbornechase.org.uk)

From the A354 turn towards Martin. The Club is on the right hand side as you enter the village. From Damerham, drive through Martin Village, the Club is at the far edge on the left.

Open 10am-5pm

S	S					F	S	S	M
20	21					26	27	28	29

♿ Wheelchair accessible

P Free on-site car park







## 21 Sue Kelly Ceramics, silver, watercolours

Stoneware and smoke-fired ceramics, both functional pieces and creative objects. Handmade silver and porcelain jewellery. Also small display of miniature vessels by Kirsty Wilson. Ceramic workshops available throughout the year.

**Elm Trees, South Gorley, Ringwood, BH24 3NL**

01425 650120 / 07901 030502 Instagram @suekellyceramics  
fettleandforge@yahoo.com fettleandforge.co.uk

Turn off A338 at Ibsley, towards Mockbeggar. Turn left at Crosslanes Chapel, Elm Trees is between Ibsley Garage and Hockeys Farm Shop.

S	S	M	T	W	T	F	S	S	M
20	21	22	23	24	25	26	27	28	29

Open 10am-5pm

🚶 Gravel driveway, 1 step

🅑 Street parking



## 23 Geoffrey Dashwood Bronze Sculpture

A sculptor of birds in bronze, eliminating all superficial detail to attain refined forms with smooth surfaces, enhanced by the application of coloured and multi-coloured patinas. Studio, gallery and sculpture garden. Scale from small life pieces to monumental. Exhibited internationally. New bronze editions available.

**Beacon Wood, Highwood, Ringwood, BH24 3LZ**  
01425 461617

geoffreydashwood@yahoo.co.uk

<http://geoffreydashwood.com>

S	S	M	T	W	T	F	S	S	M
20	21	22	23	24	25	26	27	28	29

Open 11am-4pm

🚶 Wheelchair accessible

🅑 Ample on site parking



## 22 Lindsey J Cole Painting, mixed media

An exciting range of paintings in varied subjects and media, inspired by the natural surroundings of the New Forest, and the Hampshire and Dorset coastline.

**36 Seymour Road, Poulner, Ringwood, BH24 1SH**

01425 489376 07817 624034

ljart1963@hotmail.co.uk www.lindseyjaynecole.co.uk

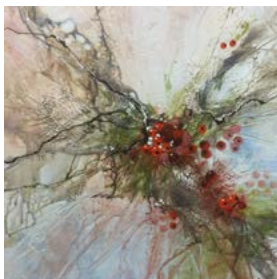
A338 to Salisbury/Fordingbridge, 1st right (Salisbury Road). Turn left (Northfield Road). 3rd right (Seymour Road). Or from the Forest (Gorley Road) 1st right (North Poulner Road). follow for 1/2 mile round to crossroads, straight over.

S	S	M	T	W	T	F	S	S	M
20	21	22	23	24	25	26	27	28	29

Open 10-4pm; except Sundays & BH Mon 11-4pm

🚶 Steps

🅑 Drive & street parking





## 24 Hillview Art Group, mixed

**Geoff Knott, Little Duck Forge, Angela Perrett, Jeanie Robinson, Daphne Speight, Judith Warbey**

'View Contemporary Art in a Tranquil Forest Setting'. Artist's books; Ceramics; Garden Sculpture; Glass; Jewellery; Painting; Print and Wood Turning, will be exhibited across three gallery spaces and garden. Artist's new work will be accompanied by demonstrations. Dwell a pause for homemade refreshments, with proceeds in aid of local Wildlife charities.

**Hillview, Linwood, Ringwood, BH24 3QT**

01425 472462 07768 765003

angandart@yahoo.co.uk www.angelaperrett.co.uk

*Approx. 1 mile north of Ringwood on the A338 turn right. Follow signs to Linwood/Red Shoot. Hillview Art is on the right, before the Red Shoot.*

S	S	M	T	W	T	F	S	S	M
20	21	22	23	24	25	26	27	28	29

**Open from 13th - 29th August inclusive**  
10.30-4.30pm except BH Mon. until 4pm

Majority wheelchair accessible Appleslade car park nearby



## 25 Ringwood Art Society Paintings, portfolios, ceramics

Over 200 works of two and three dimensional art by professional and amateur artists - paintings in oil, acrylic, watercolour, mixed media, pen and wash, textile pictures, ceramics, cards etc. Raffle.

**Greyfriars Community Centre, Christchurch Road,**

**Ringwood, BH24 1DW**

exhibitions@ringwoodartsociety.org

www.ringwoodartsociety.org

*Greyfriars is by the mini roundabout at the junction of Mansfield Road and Christchurch Road.*

S	S	M	T	W	T	F	S	S	M
20	21	22	23	24	25	26	27	28	29

Mon-Sat 10am-4.45pm; Sundays 1pm-5pm

Wheelchair access Blynkbonnie car park (charges apply)



## 26 Danny Byrne Painting

An array of original landscapes paintings along with portraits and limited edition prints! Appeared on Sky Portrait Artist of the Year 2020.

**38 David's Lane, Ringwood, BH24 2AW**

07977 206502 byrne729@btinternet.com

dannybyrneonline.co.uk

*Short distance from Ringwood. Bottom of Davids Lane, studio on the side of house.*

S	S	M	T	W	T	F	S	S	M
20	21	22	23	24	25	26	27	28	29

Open 10am-4pm

Gravel path Street parking



## 27 Angela Wiseman Group Group, mixed

Angela is hosting a variety of new work for the home and garden made by local artists. Unique ceramics, glasswork, and other artworks at affordable prices.

**Crowfields, Long Lane, Upper Kingston, Ringwood, BH24 3BX**

01425 477607 angela.wiseman@btinternet.com

*From Ringwood, follow B3347 for 1 mile. At Texaco garage, turn left onto Moortown Lane, "Crowfields" is 800yards down on the right, on corner.*

S	S	M	T	W	T	F	S	S	M
20	21	22	23	24	25	26	27	28	29

Open 10pm-5pm

Gravel drive, no steps Limited parking on drive

## 28 Elements Design Studio Metal, verre eglomise, wood

A variety of crafts on show including unique cutlery sculptures, wrought iron garden planters and ornaments and the art of verre eglomise.

**Bramble Cottage, 42, Dragon Lane, Sandford, Ringwood, BH24 3BU**

07979 218823 john.lc@talktalk.net

*Take Christchurch Road from Ringwood/left onto Moortown Lane/staggered junction turn right/next junction left to North Ripley/ right onto Dragon Lane/ follow pink flags.*

S	S	M	T	W	T	F	S	S	M
20	21	22	23	24	25	26	27	28	29

Open 10am-5pm

Gravel paths Large driveway





## 29 Wood 'n' horse Group, mixed

Group exhibition including Jake McGivern, Woodturner. Kim Weiler Sculptor in gorse wood. Paintings by Pauline Stephens and more by our guest artists. Homemade refreshments available. Cash sales only.

**5 Clough Lane, Burley, BH24 4AE**

01425 403644  
dmjakemac@gmail.com

*From village, towards Fire Station. After Old Farmhouse tearooms, take 3rd turning on left. Wood 'N' Horse, 2nd house on left. From Ringwood, 1st gravel lane after Fire Station*

Open 11am-5pm

S	S	M	T	W	T	F	S	S	M
20	21	22	23	24	25	26	27	28	29

Level access, gravel parking **P** Drive & street parking



## 32 Ally Levell Painting, ceramics

Paintings created with a mixture of acrylics and textiles. Ideas taken from books, news, music and developed over time, expressed on canvas. Handbuilt ceramics both functional and decorative.

**181 Burley Road, Bransgore, BH23 8DE**  
01425 672959 allylevell@hotmail.com

*Find me on Burley Road, half a mile from the Crown Inn crossroads, up the hill and on the left hand side. 2 minutes further on from Macpenny's Nursery.*

Open 11am-5pm

S	S	M	T	W	T	F	S	S	M
20	21	22	23	24	25	26	27	28	29

Gravel drive

**P** Parking opposite or on drive

## 33 Colin Jones, David Lester, Jane Corner

Ceramics, print, painting

Colin: stoneware ceramics, a wide range of functional & decorative work thrown on potter's wheel. David: landscape inspired dry-points, etchings, mono-print & mixed media. Jane: experimental, atmospheric mixed media painting inspired by the Jurassic coast & the New Forest.

**High Ridge, 158 Burley Road, Bransgore, BH23 8DB**  
01425 673411 colinjones@highridgepottery.com

www.highridgepottery.com

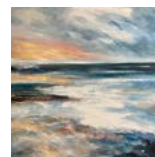
*Situated on Burley Road, half a mile from the Crown Inn crossroads up the hill and next to MacPenny's nursery.*

Open 10am-5pm

S	S	M	T	W	T	F	S	S	M
20	21	22	23	24	25	26	27	28	29

Gravel driveway

**P** Off road parking



## 30 Burley Lifestyle Group, mixed

A shop highly supportive of local artists. On show is a selection of Hare sculptures, original art, prints & cards of all mediums amongst other artisans in silver jewellery & silk flower arrangements. A selection of artists – Penny Driscoll, Paula Mitchell, Susan Jeneson, Sandra Binney and others.

**Burley Lifestyle, 4a Garden Road, Burley, BH24 4EA**

07786 074465 info@burleylifestyle.co.uk  
www.burleylifestyle.co.uk Instagram @burleylifestyle

*Navy Blue shop on the corner right opposite the main entrance to Burley Manor Hotel*

Open 10am-4pm except Sundays 11-3pm

S	S	T	W	T	F	S	S
20	21	22	23	24	25	26	27

Not wheelchair friendly **P** Parking outside shop



## 34 Rick & Sally Coombe with Jo Williams Mixed media

RECYCLING THEME - using everyday throwaway items to create Art, Craft, jewellery, textiles, musical instruments, carvings and garden sculptures. Also Bring & Buy sale for local charity SCARF.

**Forestway, Wootton Road, Tiptoe, Lymington, SO41 6FU**  
01590 683198

scoombe42@mail.com

*Take B3055 from Sway to New Milton. Turn right into Wootton Road by St. Andrews Church. Continue for 1/4 mile - on left next to Addspace.*

Open 11am-5pm

S	S	M	T	W	T	F	S	S	M
20	21	22	23	24	25	26	27	28	29

Gravel & couple of steps

**P** Drive & street parking



## 31 Burley Art Club Group, mixed

We are an enthusiastic and vibrant art club, with members ranging from beginners to professionals. Colourful, contemporary and traditional paintings in all media.

**Burley Village Hall, Pound Lane, Burley, BH24 4EA**

02380 558698 / 07484 232343

margaretannplant@gmail.com

*Exit A31 in direction of Burley. Go through village and turn right by the memorial cross to Bransgore. The village hall is about 300 yds on the right.*

Open 10am-5pm except 20th from 1pm

S	S	M	T	W	T	F	S	S	M
20	21	22	23	24	25	26	27	28	29

Wheelchair accessible **P** Free parking opposite village hall



## 35 Jubilee Art & Crafts Group, mixed

Art work and crafts by local contributors, including large multi media group art inspired by the theme of Jubilee.

**The Life Centre, Wootton Road, Tiptoe, Lymington, SO41 6FT**  
07858 117687 info@riveroflifeforest.org

www.riveroflifeforest.org

*From A35 take B3058 towards New Milton. Turn left at the Rising Sun into Tiptoe Road. After 1 mile turn right into the Life Centre carpark. Light refreshments available.*

Open 10am-4pm except 26th 2pm - 7pm

T	W	T	F	S
23	24	25	26	27

Wheelchair accessible

**P** Car park in grounds



### 36 Peter Cryer Painting

Acrylic seascapes and New Forest landscapes featuring a range of moods, colours and the occasional surprise.

**Tarna, Brighton Road, Sway, Hampshire SO41 6EB**

01590 682665 / 07503 769487

petercryer01@btinternet.com

*Travelling out of Sway village towards the forest on Brighton Road, Tarna is circa 200 yards prior to the cattle grid on the right hand side of the road.*

S	S				T	F	S	S	M
20	21				25	26	27	28	29

Open 10am-5pm

Gravel path

P Street parking



### 37 Garry Symes, Carol Reed, 'Newe' Friends Group

Painting, prints, textiles, cards, crafts

Huge variety of work to view, including mixed-media landscapes incorporating newspaper, tissue, sandpaper. Also watercolour paintings, prints, cartoons, cards, handmade textiles and daily demonstrations.

**6 Oakenbrow, Sway, Lymington, SO41 6DY**

07711 846325 garry@futuredata.com www.symesart.com

*From Railway station in centre of Sway, head north on Station Road, slightly right onto Brighton Road. Oakenbrow is a road off to the left. Venue is third house on right.*

S	S	M	T	W	T	F	S	S	M
20	21	22	23	24	25	26	27	28	29

Open 10am-4pm

Small steps

P Street & drive parking



### 38 Just SO Studio & Yoo Nee Yak Bags & Steve Cooper Art Ceramics, textiles, drawing

Sally Ovenden - Ceramic sculpture and pots inspired by the coast and New Forest. Sarah Uniacke - handmade luxury bags made from cork and cordura. Steve Cooper - pen and ink, modern and historic architecture.

**17, Stanford Rise, Sway, SO41 6DW**

07778 541616 justsostudio@gmail.com

justsoceramics.com

*With Sway station on your left head straight on until crossroads (Butchers on the corner), turn right in to Middle Road & then left in to Stanford Rise. Follow arrows.*

S	S	M	T	W	T	F	S	S	
20	21	22	23	24	25	26	27	28	

Open 10am-4pm

2 steps

P Street or layby



### 39 Jane Puckering Painting

Primarily a continued exploration of Skye, Orkney, Shetland and the Outer Hebrides. Jane's paintings reflect captured moments.

**St Judes, Middle Road, Sway, SO41 6AT**

01590 683972 jane.puckering@btinternet.com

*Take B3055 to Sway. Opposite Hare & Hounds turn into Manchester Road. Turn left into Middle Road. St Judes is converted church on left.*

S	S				T	F	S		
20	21				25	26	27		

Open 10am-4pm

Gravel drive, 3 steps

P Parking on gravel frontage



### 40 spudWORKS Gallery & Resident artists Group, mixed

Contemporary art, textiles, wood, ceramics, print and jewellery curated by Artful Collective in the gallery. Free Entry to the exhibition.

SPUD's resident artists will also have their studios open: see [spud.org.uk/whats-on](http://spud.org.uk/whats-on) for full details. Work on show will cover a broad range of media and content and include painting, ceramics, textiles and sculpture.

**spudWORKS, Station Road, Sway, SO41 6BA**

01590 682260 [www.spud.org.uk](http://www.spud.org.uk)

Instagram & Facebook @spud.org.uk

*spudWORKS is located opposite the Silver Hind pub and adjacent to Budgens store, along a wide gravel driveway. Parking is limited at the gallery but free parking is available throughout the village and we are a 2 min walk from Sway Train Station. A disabled parking bay is available at the gallery entrance..*

S	S	M	T	W	T	F	S	S	M
20	21	22	23	24	25	26	27	28	29

Open 10am-4pm

Gravel disabled parking available.

P Limited on site parking. Free parking in Sway village



### 40 Artful Collective Group, mixed

Artists - Caroline Hiron, Cathy McCarthy, Clare Spender, Dawn Gear, Georgina Ettridge, Gill Drew, Hazel Gibbs, Kathryn Arbon, Mike Braisher, Sarah Waters, Sian Appleyard, Jocelyn Tallis.

Contemporary artist and makers collective featuring painting, drawing, printmaking, jewellery, wood turning and textiles.

**spudWORKS, Station Road, Sway, SO41 6BA**

01590 682260 [hello@artfulcollective.co.uk](mailto:hello@artfulcollective.co.uk)

[artfulcollective.co.uk/hampshire-open-studios](http://artfulcollective.co.uk/hampshire-open-studios)

Instagram @artfulcollective

Facebook @theartfulcollective

*Opening times, parking and accessibility details as listed for spudWORKS*





**41 Chris Made This & Friends** Group, mixed  
A collection of handwoven, embroidered and felted items including scarves, bags, garments. Hand built stoneware ceramics including bowls from Wobbly Pots of Sway. On site demonstrations.  
**Arnewood Manor Farmhouse, Arnewood Bridge Road, Sway, SO41 6ER**  
07771 941290 juliapride@outlook.com  
*On B3055 New Milton to Sway. After Crabswood Lane on left Arnewood Manor House is thatched with thatched lychgate on left before 30 minute sign and sharp bends towards Sway*

S	S	M	T	W	T	F	S	S	M	Open 10am-4pm	
20	21	22	23	24	25	26	27	28	29	🚶 Lawn, gravel, shallow steps	🅑 Layby opposite



**45 Jenny Sutton** Painting  
Oil paintings of still life, flowers and coastal landscapes. New gallery for 2022. Shortlisted Artist of the Year 2019 by A&I magazine.  
**The Studio, Yeatton House, Hordle Lane, Downton, Lymington, SO41 0HW**  
01590 641563 / 07976 830569  
info@jennysutton-fineart.co.uk <http://jennysutton-fineart.co.uk>  
*From Royal Oak crossroads on A337 Lymington to New Milton turn right into Hordle Lane, 1 mile on right immediately before Apple Court Garden*

S	S	M	T	W	T	F	S	S	M	Open 11am-5pm	
20	21	22	23	24	25	26	27	28	29	🚶 Gravel path, step	🅑 Ample car park, follow sign



**42 Barbara Kennard** Printmaking, watercolours  
Thought provoking work, strong images and varied themes inspired by the colours of nature, travel, local scenes and living in Newcasttle under the gaze of the Angel of the North.  
**48, Doe Copse Way, New Milton, BH25 5GB**  
07531 837231 07babsartist@googlemail.com  
babsartist.com  
*From A35 exit at A3055 sign posted Motorcycle Museum. After Museum turn right into Stem Lane then 2nd left Doe Copse Way. No 48 is on right before children's playground.*

S	S	M								Open 10am-5pm	
20	21	22								🚶 Garden display	🅑 Street parking



**46 Jules Carpenter Pottery** Ceramics, soy wax candles  
Made in the studio, stoneware ceramics, colours of the coast glazes; contemporary tableware; soy wax candles in pots to keep. Textile exhibition by Zara Linsley, studio intern and AUB undergraduate.  
**Downlea, 23 Downton Lane, Downton, Lymington, SO41 0LG**  
07717 398 682 julesceramics@gmail.com  
Instagram @julesceramics [www.julesceramics.com](http://www.julesceramics.com)  
*Heading west from Lymington on A337, towards New Milton, turn left at Royal Oak pub into Downton Lane. Downlea, is on the left, number 23 and black gates.*

S	S			W	T	F	S	S	M	Open 11-5pm	
20	21			24	25	26	27	28	29	🚶 Gravel drive, level access to studio	🅑 Driveway parking



**43 Jaundrells Studio & Friends** Hand crafted materials  
A diverse range of unique hand crafted items comprising wheel thrown & hand built ceramic pottery; New Forest inspired animal paintings; New Forest Marquee soaps using pure plant butters and oils; skin & hair care, doggie paw balm; hand-made sterling silver jewellery and copper flowers.  
**4 Jaundrells Close, New Milton, BH25 6AY**  
07526 568761 jaundrellstudio@outlook.com  
rebeccaevanscreate.com [www.puresoapiness.co.uk](http://www.puresoapiness.co.uk)  
*From New Milton going towards Ashley, Jaundrells Close is approx half a mile on the right, just past the end of Caird Avenue.*

S	S	M	T	W	T	F	S	S	M	Open 10am-5pm	
20	21	22	23	24	25	26	27	28	29	🚶 Tarmac & grass path, 3 low steps up	🅑 Parking for several cars in the Close



**47 Heather Jolliffe, Jane Andrews, Claire Ferrar** Group, mixed, cards  
A colourful mix of artworks with seascapes, landscapes, portrait and coastal botanical art, by Heather Jolliffe, Jane Andrews and Claire Ferrar.  
**Crinan, West Road, Milford on Sea, SO41 0NZ**  
hjolliffeart@gmail.com [www.heatherjolliffeartist.com](http://www.heatherjolliffeartist.com)  
Instagram @heather\_jolliffe\_art  
Instagram janeandrews7 Instagram @claireferrar  
*On the B3058 heading from Milford to New Milton, West Road is the last right turn, with Crinan located on the left.*

S	S	M	T	W	T	F	S	S	M	Open 10am-4pm	
20	21	22	23	24	25	26	27	28	29	🚶 Gravel driveway and path	🅑 Free street parking



**44 Forest Arts Centre** Group, mixed  
Unforeseen: Graduate Platform: In partnership with local colleges, universities and emerging artists we present a fascinating exhibition of work from graduates celebrating emerging talent within the community.  
**Old Milton Road, New Milton, BH25 6DS**  
01425 612393  
[hampshireculturaltrust.org.uk/forest-arts-centre](http://hampshireculturaltrust.org.uk/forest-arts-centre)  
*From Lymington take the A337 towards Christchurch and Bournemouth. We're on the right hand side just past New Milton Infant School. From Lyndhurst (A35) turn left onto B3058 to New Milton. We're at the end on left just before the A337.*

		M	T	W	T	F	S			Open 9am-5pm, Saturday 10am-2.30pm	
		22	23	24	25	26	27			🚶 Wheelchair accessible & toilets	🅑 Car park & 2 disabled bays





## 48 Julie Collins

Painting

Award winning Artist: ING Discerning Eye & RWS London, RWA Bristol, regularly exhibits at the Mall Galleries London and prestigious UK Galleries. Contemporary paintings inspired by the Solent & New Forest.

**Whitby House, 20C Whitby Road, Milford on Sea, SO41 0ND**  
07917 195001 collins.julie@icloud.com  
www.juliecollins.co.uk

From the Village Green travel west, turn right into Kivernell Road, continue into Whitby Road. Whitby House is a tall semi detached house almost opposite Cornwallis Road.

S	S	M				F	S		
20	21	22				26	27		

Open 11am-5pm or by appointment

♿ Steps, no wheelchair access

P Street parking

## 49 Clare Morrell, Mary Williams, Christine Calder, Janet Wheat, Joyce Grainger

Painting, mixed media, textiles, craft

A range of styles using all media including paint, ink, mixed media, textiles, plaster and craft in which we express our delight in colour, pattern and form. If possible tea and homemade cake served in aid of charity.



**All Saint's Church Hall, Greenbanks Close, Milford-on-Sea, SO41 0SQ**

01590 644692 07761 817 627  
marywilliamsart@gmail.com  
www.marywilliamsartist.com

From Milford Green follow signs to the Norman church at top of Church Hill, turn left, venue on right.

S	S	M	T	W	T	F	S	S	M
20	21	22	23	24	25	26	27	28	29

Open 10am-4.30pm

♿ Wheelchair access P Ample parking



## 50 Church Hill Studio

Oil, printmaking, mixed media

Church Hill studio. Three artists working together - Kate Danby, Norma Delany & Sally Gore - all inspired by the landscape both locally & further afield.

**Old Walls, Church Hill, Milford on sea, SO41 0QJ**  
01590 642138 kate@oldwalls.com

Church Hill heads north from Milford village green. Old Walls is a long red brick building opposite All Saints Church with a stable door

						F	S	S	M
						26	27	28	29

Open 10am-4pm

♿ Steps

P Church Hall car park or street



## 51 Eileen & Peter Sey

Painting, mixed media, drawing

Eileen, Paintings inspired by natural forms of landscapes & coastlines, ranging from representational to abstract in acrylics & oils, textiles. Peter, Paintings in acrylics, pen & ink prints, local views.

**Coppins, Barnes Lane, Milford-on-Sea, SO41 0RR**  
01590 643261 eileen@harlequinart.co.uk  
www.harlequinart.co.uk

Take the B3058 to Milford-on-Sea, pass school and pedestrian crossing, take first right, into Manor Road, at end turn sharp right, Coppins is 5th house on left.

S	S	M	T	W	T	F	S	S	M
20	21	22	23	24	25	26	27	28	29

Open 10am-5pm

♿ One step gravel drive P Parking at top of drive



## 52 Splinters

Group, mixed

Enid Freshwater, Cathy Beggs, Jo Britton, Barbara Lathwell, Gill Stopher, Barbara Rousseau, Sheila Thompson, M'eudail Latham. We are a group of artists who meet regularly to paint & exchange ideas, working in all media & subject matter.

**Milford-on-Sea Village Community Centre, Sea Road, Milford-on-Sea, SO41 0PH**

07951 828606 cathybeggs@waitrose.com

From Milford village centre turn into Sea Road, continue to the public car park 100 yards on the left. The Dance Studio is situated to the rear of the car park.

S	S	M	T	W	T	F	S	S	M
20	21	22	23	24	25	26	27	28	29

Open 10am-5pm except BH until 4pm

♿ Wheelchair accessible P Public car park nearby



## 53 Jane Wafer

Ceramics, sculpture

Smoke-fired pots and wire sculptures, inspired by the sea.

**Salt Grass Cottage, Saltgrass Lane, Keyhaven, SO41 0TQ**  
01590 642961 / 07798 918915

jane.wafer@ntlworld.com www.janewafer.com

Take Keyhaven Road from Milford on Sea. After the Gun Inn and car park, the road goes sharp right into Salt Grass Lane. After the lane narrows, take the gravel drive forking right.

S	S					W	T	F	S	S	M
20	21					24	25	26	27	28	29

Open 10am-5pm

♿ Gravel drive, ramp to studio P Limited driveway parking





**54 Keyhaven Artists** *Painting, jewellery, textiles, cards*  
 Keyhaven Artists: Tessa van Hasselt, Sue Page, Angela Versey, Susan Jeneson  
 Tessa van Hasselt - Oils, Seascapes, Children, Birds, Greeting Cards.  
 Sue Page - Semi- precious gemstone jewellery. Angela Versey - Paintings, printwork including textile printing. Tea/Coffee/Cold drinks will be available.  
 Susan Jeneson -Animal portraits, local landscapes in oils, prints, cards & mugs  
**The Sea Scout Hut, Keyhaven, Lymington, SO41 0TP**  
 07845 893480 tcvanhasselt@gmail.com

*From Milford on Sea follow signs to Keyhaven. Pass the Gun pub on right, turn left into car park. Sea Scout hall on far side. Look for the pink Bunting!*

S	S	M	T	W	T	F	S	S	M
20	21	22	23	24	25	26	27	28	29

Open 19th Aug - 29th Aug 10am-4pm  
 ♿ Wheelchair access P Adjacent main Keyhaven car park



**57 Art & Co** *Group, mixed*  
 Bridget Bugg, James Bull, Jackie Marshall & Helen Theobald are showing their creative, contemporary work exploring a range of subjects.  
**Lymington Baptist Church, New Street, Lymington, SO41 9BJ**  
 01590 677098  
 jackie\_marshall@tiscali.co.uk

*In the centre of Lymington High Street, New Street is between Boots and Costa. The venue is opposite Lymington Museum in New Street.*

						T	F	S	M
						25	26	27	29

Open 10am-5pm  
 ♿ Wheelchair access P Nearby town car parks by slope



**55 Sandy Williams** *Painting*  
 Come and visit my art studio in the garden. Mostly larger intuitive paintings. Oil on Canvas exploring colour and energy. High visual impact. Also selling cards of my paintings.  
**31, Elm Avenue, Lymington, SO41 8BE**  
 01590 381276 / 07508 087695 sandywilliams182@icloud.com  
 Instagram.com @bluebirdstudio31

*Just before Elm Avenue changes into Newbridge Way, turn left along gravel track and number 31 is 2nd on LHS. Look forward to seeing you! Sat nav to our postcode with number 31 will get you to us*

					F	S	S	M
					26	27	28	29

Open 10am-5pm  
 ♿ Lawn, one step P Drive or street parking



**58 Julia Ayers & Samantha English** *Painting, metalwork*  
 Julia's paintings constantly evolve to produce an exciting range of contemporary work from seascapes to abstract. Samantha is an artist using metals to explore the preciousness and fragility of our memories.  
**132 High Street, Lymington, SO41 9AQ**  
 07546 552189 juliaayers1@gmail.com  
 samanthaenglishjewellery@gmail.com

*Take the A337 to Lymington town, our venue is at the bottom of the High Street, between the Deep Blue Chip Shop and Lal Quilla Indian Restaurant, tucked up small road next to the Catholic Church.*

S	S	M	T	W	T	F	S	S	M
20	21	22	23	24	25	26	27	28	29

Open 10am - 4.30pm  
 ♿ 2 steps P Nearby car parks & street parking

**56 Chalks Gallery** *Group, mixed*

Chalk's is an artist run gallery in Lymington with a beautiful range of artworks from a variety of local artists. Mediums include painting, printmaking, glass, ceramics, jewellery, sculpture, wood and textiles. During the week there will be live demonstrations by a selection of exhibitors. Please see our website for more details.

**29 St Thomas Street, Lymington, SO41 9NE**  
 01590 688048 info@chalksgallery.com  
 www.chalksgallery.com Instagram @chalksgallery

*Across the road from Marks and Spencers Food in Lymington*



S			T	W	T	F	S		
20			23	24	25	26	27		

Open 10am-5pm  
 ♿ Wheelchair accessible P Car park near by behind M&S Food



**59 John Stork** *Photography*  
 My images are created to hang in homes and offices. This year they are interestingly abstract and my 2022 exhibition 'Impressions' is on display in the studio. Limited-edition prints, mostly A3 size, can be ordered at special prices during the Open Studios period. There are also some earlier framed prints and cards available, mostly based on travel and marine themes.  
**Old Solent House Studio, Quay Hill, Lymington, SO41 3AR**  
 01590 610399 john@jstork.com www.johnstorkimages.com  
*The studio is behind Old Solent House, at the bottom of Quay Hill, the pedestrian-only 'cobbles' in Lymington. Walking down the hill, turn left towards Mill Lane and you will find the studio on the right.*

S	S	M		W	T	F	S	S	
20	21	22		24	25	26	27	28	

Open 10am-5pm  
 ♿ Telephone for disabled parking P Nearest car park Lymington Quay



**60 Linda & John Maunsell** *Ceramics, painting*  
 Unique wheel thrown or coiled ceramics, inspired by nature along the Salt Marshes, the sea and the sky. Plus original oil paintings and prints of local seascapes and sailing events.  
**Springmead, 28 Belmore Road, Lymington, SO41 3NT**  
 07814 504049 forlindi20@gmail.com  
 Instagram @lindiceramics

*Belmore Road is on the left as you leave Lymington town on the A337 towards Pennington. Springmead is on the left just before the bend.*

S	S		T	W	T	F	S	S	M
20	21		23	24	25	26	27	28	29

Open 11am-5pm  
 ♿ 4 shallow steps, gravel drive P Drive & street parking



## 61 Island View Studios Ceramics

Catherine Judah will be exhibiting beautiful wheelthrown stoneware ceramics made in her home studio.

**Island View House, 117 Ramley Road, Pennington, SO41 8LH**  
01590 675282 cath.judah@googlemail.com  
www.cljceramics.uk

*Travel north on Ramley Road. The studio is situated in the garden of Island View House which is on the right hand side just past Ramley Farm.*

S S M W S S M Open 10am-4pm

20 21 22 24 27 28 29

2 steps, lawn

P Parking on forecourt



## 64 Alison Bolton & Mary E Smith Painting, ceramics, silver

Alison - Paintings based on landscapes of the Forest and Solent.  
Mary - Ceramics with beautiful glazes

**Boldre Bridge Cottage, Boldre, Lymington, SO41 8PD**

01590 674607

alisonbolton10@btopenworld.com www.alisonbolton.co.uk

*South on A337 past Hobler Inn, turn left at crossroads down Rope Hill and past Red Lion on right, red brick cottage 100 yards on left, lower entrance.*

S S W T F S S M Open 11am-5pm

20 21 24 25 26 27 28 29

Small step

P Drive & nearby layby



## 62 Marion Royle & Vanessa Sharp Painting, jewellery

Handmade jewellery using silver and semi precious stones inspired by textures and shapes of the New Forest. Oil and cold wax paintings inspired by New Forest coastal birds and sailing.

**Kings Hyde House, Kings Hyde, SO41 8LT**  
07979 695005 marionroyleart@gmail.com  
www.marionroyle.com www.vanessasharpsilver.co.uk

*Kings Hyde House is on Kings Hyde a small lane that runs between Pitmore Lane and Mount Pleasant Lane. Near to Passford House Hotel.*

S S W S S M Open 10.30am-4pm

20 21 24 27 28 29

Limited wheelchair access, small step

P Limited parking in yard



## 65 Isil Campanella, Julia Osborne, Chantal Fordham Group, mixed

Chantal Fordham Contemporary Ceramics. Isil Campanella Functional and Contemporary Ceramics. Julia Osborne Fine Art Watercolour Paintings, cards, prints and Textiles

**Studio 2, Boldre Bridge Cottage, Boldre, Lymington, SO41 8PD**

julia.osborne@rocketmail.com

Instagram @chantalceramics @isdceramics

@JuliaStephanieOsborne

*South on A337 past Hobler Inn, turn left at crossroads down Rope Hill and past Red*

*Lion on right, red brick cottage 100 yards on left, lower entrance.*

S S M T W T F S S M Open 11am-4.30pm

20 21 22 23 24 25 26 27 28 29

Small Step

P Drive & nearby layby



## 63 Artists for Oakhaven Paintings, prints, cards

For the 4th year, we are selling paintings, prints, cards and preserves with all revenues going to the Oakhaven Hospice. Please support us raising funds for this important local charity.

**Oakwood, Boldre Grange, Lymington, SO41 8PT**  
01590 676173 07774 275309  
marionjlewis@myself.com www.marionlewis.co.uk

*From A337 south of Rosie Lea House and car wash, turn opposite Car Boot Sale field down private road to Boldre Grange; 400 yds to Oakwood on right.*

S S M F S S M 11am-4pm or other times by appointment

20 21 22 26 27 28 29

First floor studio

P Driveway parking



## 66 Eric Gibbons Wood turning

I turn wood, spalted, recycled and indigenous in varied styles, some contemporary, some naturalistic. Bowls are a passion produced in many shapes and sizes along with some quirky items.

**Brambles, Boldre Lane, Boldre, Lymington, SO41 8PA**

07847 470130 erictgibbons@hotmail.com

www.newforestwoodturner.co.uk

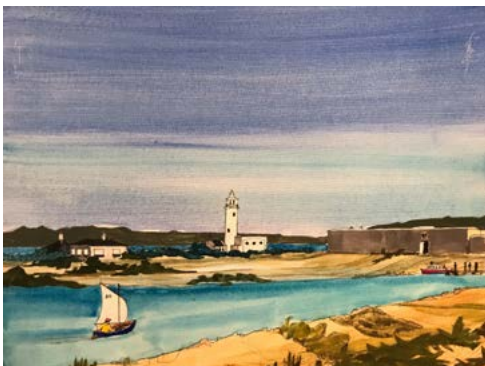
*From Lymington/Brockenhurst A337 North under railway bridge across the roundabout, turn right in 50yds into Boldre Lane. Venue 1/2 mile on right adjacent to Shallowmead Nurseries delivery entrance.*

S S M T W T F S S M Open 10am-5pm

20 21 22 23 24 25 26 27 28 29

Gravel drive, small step

P Drive parking, don't block Nursery please



## 67 Frances Mason Painting, printmaking, textiles

Frances will be exhibiting paintings, prints and artist books based on the forest and mohair products from her angora goats. Jenny contemporary art prints, Julie, home and garden decor

**Linden, Jordans Lane, Pilley, Lymington, SO41 5QW**

01590 679921 07835 958613

linden@waitrose.com www.newforestmohair.co.uk

*A337 south from Brockenhurst. Take 1st left after Rosie Leas House, follow lane through Boldre and Pilley, over cattlegrid follow sharp bend to the right, 2nd property on left.*

S S M T W T F S S M Open 11am-5pm

20 21 22 23 24 25 26 27 28 29

Flat access, gravel

P Lane or driveway





## 68 Liz Pannett & Gina Dearden

Painting, printmaking, ceramics

Liz exhibited in the Royal Academy Summer Exhibition and numerous other International and British Exhibitions. Gina is a Slade trained artist interested in painting and printmaking, and all visual expression. Printmaking demos.

**Bank Cottage, Main Road, East Boldre, SO42 7WU**

01590 626706 liz.pannett@me.com

Instagram @lizpannett41 @artdayscovecottage

Bank Cottage is 4 miles outside Lymington on loW Ferry Road, on the border between East End and East Boldre. From the North go to Hatchet Pond through East Boldre.

S	S	M	T	W	T	F	S	S	M
20	21	22	23	24	25	26	27	28	29

Open 11am-5pm

Gravel path, small step Driveway and street parking



## 69 Art at the Pub

Painting, cards, crafts

Jan Hawker and Carol Mileusnic. Taking inspiration from Forest and Coast we are showing a varied selection of paintings, cards and craftwork in the garden of this busy pub.

**Turfcutters Arms, Main Road, East Boldre, SO42 7WL**

Artists 07930 663637 Pub 01590 612331

artworkcm@talktalk.net

www.the-turfcutters-new-forest.co.uk

From Lymington and Beaulieu: at Hatchet Pond turn into East Boldre. Follow road past the village hall; pub is on the right.

S	S	M	T	W	T	F	S	S	M
20	21	22	23	24	25	26	27	28	29

Open Noon-4pm

Level access, gravel Ample parking



## 70 Palais des Vaches Gallery

Group show

The Palais hosts many local Hampshire artists, potters and sculptors in association with Coastal Gallery from Lymington.

For full details of all artists and their works visit [www.palaisdesvaches.co.uk](http://www.palaisdesvaches.co.uk)

**Palais des Vaches, Lower Exbury Farm, Inchmery Lane, Exbury, Southampton SO45 1AE**

02380 243102

info@palaisdesvaches.co.uk Instagram @palaisdesvaches

www.palaisdesvaches.co.uk Facebook @palaisdesvaches

To get to The Palais take road to Exbury, follow yellow sign in Exbury, go straight ahead at sharp bend, 1.5 miles turn right at mirror and gallery at end of track. Lots of parking.



S	S	M	T	W	T	F	S	S	M
20	21	22	23	24	25	26	27	28	29

Open 11am-4pm daily

Wheelchair accessible Ample, easy parking

## 71 Watermark

Original paintings, prints, designer glass, cards

Sandra: semi-abstract landscapes/animals/portraits. Evelyn: bright graphic land/seascapes. Jo: designer fused glass, Tiffany-style, mosaics.

**The Classroom, Lepe Country Park, Southampton, SO45 1AD**

07770 463489 07712 222962

evieb9@yahoo.co.uk

www.evelynbartlett.co.uk

www.sandrabinney.com www.jolapage.co.uk

Follow A326 and tourist signs for Lepe Country Park. Classroom on right just before beach, opposite upper car park on left.

S	S	M	T	W	T	F	S	S	M
20	21	22	23	24	25	26	27	28	29

Open 11am-5pm

Ramp access for wheelchairs Lepe car park; on-site for Disabled badge holders



## 72 Shandy Simmons & Geoff Pinckney

Painting, drawing

Shandy Simmons: Landscapes, seascapes and wildlife in oils, watercolours, pastels and acrylics. Geoff Pinckney: working mainly in graphite and watercolour covering pet portraits and various other subjects.

**Peacehaven, 17 Mopley Close, Blackfield, SO45 1YL**

02380 891454

shandysimmons@hotmail.com

Driving through Blackfield towards Lepe Beach turn Left into Mopley then 2nd Left into Mopley Close. Bungalow 100yds on left

S	S	M	T	W	T	F	S	S	M
20	21	22	23	24	25	26	27	28	29

Open 11am-4pm

2 small steps Street parking



## 73 Nina's Fused Glass

Glass

Fused glass art.

**26 Waltons Avenue, Holbury, Southampton, SO45 2LU**

07738 496699

Facebook @NinasFusedGlass

Follow A326 into Holbury, turn right at KFC, studio on right. what3words location ///duplicity.ascendant.gossip

S	S					F	S	S	M
20	21					26	27	28	29

Open 11am-4pm

Street or drive parking



## 74 A piece of art & a slice of cake Group, mixed

All media worked on with these inventive group of artists. See artists working, showcasing individual and group projects. View woodblock carving to minatures. Refreshments available.

**W I Hall, Lunedale Road, Dibden Purlieu, SO45 4QP**

peniel@talktalk.net



A326 towards Fawley, at Heath Hotel take 2nd left onto Beaulieu Road towards Hythe. 200 metres turn right Whinfield Road then right into Lundale Road. W I Hall on left.

S S M T W T F S S M Open 10am-5pm

20 21 22 23 24 25 26 27 28 29

No access restrictions, disabled toilet

P Parking opposite school car park



## 75 Brenda & Chris Molyneux Painting, woodturning

Brenda - Representational to abstract paintings expressing her emotional responses to life's energies through her joy of colour. Chris - Woodturnings in classical and contemporary designs capturing the inner beauty of wood.

**44 Butts Ash Avenue, Hythe, Southampton, SO45 3RE**

02380 844970 cwmolyneux2@btinternet.com

www.molyneuxart.weebly.com

From A326 towards Fawley, take 3rd exit at Dibden Purlieu roundabout onto Roman Road. Proceed for 1 mile. Turn right after The Glen public house. No.44 is on the RHS.

S S M T W T F S S M Open 10am-5pm

20 21 22 23 24 25 26 27 28 29

Gravel drive

P Ample parking on driveway



## 76 Tory Allen Mixed media

Multimedia artist inspired by faith & nature, creating artworks to uplift encourage and inspire. Featuring guest artist Lisa's beautiful gift cards and crochet work. Workshops available by appointment.

**4 Warrys Close, Hythe, SO40 3QS**

07946 799043 toryallenart@gmail.com

Facebook @Toryallenart

A326 towards Fawley take 3rd exit at Dibden Purlieu roundabout onto Roman road. Continue until you turn onto Yelverton Avenue on right and follow road round until Warrys Close on right.

S M T W T F S M Open 10am-5pm

20 22 23 24 26 27 29

Small step

P Street parking

## 77 John Bunday Printmaking, books

Woodcuts, etchings, linocuts, handprinted artist's books. Recent work - inspired by life in a small town; the forest and the climate; mountain landscape. Original prints and cards.

**5 Alexandra Close, Hythe, SO45 6BB**

02381 943239 bundays@live.co.uk

M27 junction 2, A326 to Dibden roundabout, Hythe exit, after Shell garage 1st. left School Road. Then 2nd. right Alexandra Road, 200 yards then turn left into Alexandra Close.

S S M T W T F S S M Open 12-5pm

20 21 22 23 24 25 26 27 28 29

Steps with handrail

P Drive & street parking



## 78 Art on the Pier: Debra Campbell & Jill Gower Painting

Join us on Hythe Pier. A fabulous location to view our artwork. We are inspired by the Pier, The New Forest & local seascapes. A varied selection of artworks in watercolour, acrylic & pastel. Donations to Hythe Pier Heritage Association welcome and 10% of sales donated to HPHA.

**The Waiting Room, Hythe Pier, Hythe, SO45 5DU**

07702 498648 debralynnetcampbell@gmail.com

A326 to Dibden Roundabout. Hythe Exit. After about a mile turn left Jones Lane immediately before Shell Garage. Take second right Jones Car Park. Follow signs to Hythe Ferry. Walk 640m or catch the historic train to end of pier.

S S M T W T F S S M Open 10am-4pm plus 30th August

20 21 22 23 24 25 26 27 28 29

Pier wheelchair access (not train)

P Public car park



## 79 Waterside Art Group Group, mixed

Vibrant and welcoming local group proud to showcase their display, which includes a wide range of subjects in contemporary and traditional styles. 2023 calendar of local images and cards by members for sale.

**Hythe & Dibden Community Centre, Brinton Lane, Hythe, SO45 6DU**

023 8084 4074 athelingvillas@gmail.com

watersideartgroup.co.uk

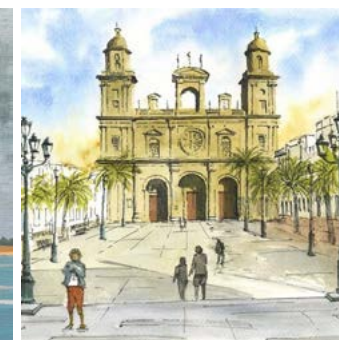
A326 to Dibden Roundabout. Take Hythe exit. After about one mile turn left down Jones Lane immediately before Shell Garage. Take second right. Community Centre car park (free) is on right.

S M T W T F S Open 10am-4pm

20 22 23 24 25 26 27

Wheelchair accessible

P Free Community Centre car park





**80 Sue Kerrigan-Harris** *Painting, prints*  
Sue is a Professional Pastel Artist, experienced Art Tutor/Workshop Leader and teaches students worldwide. Sue invites you to come to her Garden Studio and try soft pastel yourself - She'll give you a mini seascape pastel lesson (£5) and you can take home your first pastel painting!

**1 Moss Drive, Marchwood, SO40 4YB**  
07740 282399 sue@skhportraits.co.uk  
www.skhportraits.co.uk Instagram @skhportraits  
Follow Jacob's Gutter Lane towards Marchwood for 2 miles. At roundabout take 2ND exit. Take 3RD turning on right into Moss Drive. 1st house on left, through side gate by garage.

S	S					F	S	S	M	Open 9.30am - 4pm	
20	21					26	27	28	29	🚶 slope/narrow path & 2 steps	🅑 Road or recreation ground opposite



**84 Malcolm Crocker** *Painting*  
My work is challenging! Our universe is a place of endless time, space and possibilities. I'm imagining futures and reflecting on our concerns. Come and see my paintings and consider.  
**Woodbine Cottage, 266 Woodlands Rd, Woodlands, SO40 7GH**  
07826 518760 malcolmcrocker@btinternet.com  
malcolmcrocker.com/artist

Woodlands is between Netley Marsh, Ashurst and Cadnam. Junctions 1 & 2 on the M27 are close by. Look for The Gamekeeper pub on Woodlands Road. We are next door.

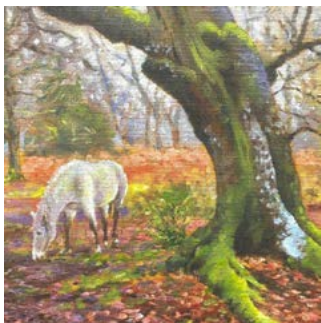
S	S	T		T		S	S	M	Open 10.30am-4pm	
20	21	23		25		27	28	29	🚶 Gravel drive, 2 steps	🅑 Street or adjacent pub



**81 Sunnyfields Arts** *Group, mixed*  
A new show by 3 of Hampshire's leading artists coming together for 4 days only.

**Sunnyfields Farm, Jacob Gutter Lane, Marchwood, SO40 9FX**  
07956 857235 07796 875480  
Instagram @Bert\_hall @chameleonartandcraft  
colinphillipsdesignerblacksmith@yahoo.co.uk  
See map on website <https://www.sunnyfields.co.uk/FindUs>

						F	S	S	M	Open 11am-4pm - At other times by appointment	
						26	27	28	29	🚶 Wheelchair accessible	🅑 Plenty of free parking



**82 Peter Frost** *Painting*  
Wildlife, landscape, seascapes of the New Forest and other parts of Britain. Painted in oils and water colour with a deep love and knowledge of the subjects painted.

**The Glen, Fletchwood Lane, Totton, SO40 7DZ**  
02380 292960 07780 965943  
peter.frost@hotmail.co.uk  
From the A326 turn into Fletchwood Road, (signed Ashurst Bridge), continue along Fletchwood Lane for one mile. The Glen is on the right after Martins Croft Farm.

S	S					T	F	S	S	M	Open 11am-4pm	
20	21					25	26	27	28	29	🚶 Gravel path, 2 steps	🅑 Drive & lane parking

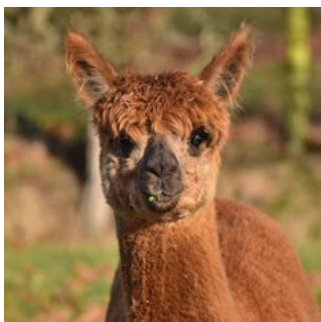


**85 2002 Textile Artists** *Assorted textiles*  
A selection of hand and machine stitched and embellished textiles using varied and unique techniques. Many items including wall hangings, pictures, vessels, books, bags and cards. Demonstrations and refreshments.

**Waldrons, Brook, Nr Lyndhurst, SO43 7HE**  
023 80813367  
jrobinson08@btinternet.com

4 miles north of Lyndhurst on B3079, 1 mile west of junction 1 on M27, First house past Green Dragon pub and directly opposite Bell Hotel.

S	S	M	T	W	T						Open 11am-4pm	
20	21	22	23	24	25						🚶 Wheelchair accessible	🅑 Side road parking



**83 Petlake Alpacas** *Fibre, painting, ceramics*  
Petalake Alpacas bring you a fabulous mix of fibre art, ceramics, paintings and beadwork. All hand made locally in the beautiful New Forest.

**Petalake Farm, Ringwood Road, Bartley, SO40 7LA**  
07511 472861  
www.petalakealpacas.co.uk  
Situated on the south side of the 1336 between Totton and Cadnam.

S	S	M	T	W	T	F	S	S	M	Open 10am-5pm	
20	21	22	23	24	25	26	27	28	29	🚶 Wheelchair access, no disabled toilet	🅑 Parking on site



**86 Joy, Peter, Howard, Alison & Jane** *Painting, wood, ceramics, photography*  
Paintings by Joy Dickens, Peter Willis & Alison Windell. Wood Turning by Howard Babey, Pottery by Jane Spring & photography by Landford Photography Group  
**Landford Methodist Church Hall, Lyndhurst Road, Landford, SP5 2AE**  
01794 390295 / 07518 032301  
exhibition@forestmoodsart.co.uk forestmoodsart.co.uk  
The hall is situated on the Lyndhurst Road B3079 at Landford. It will be signed from the A36 at Landford and from Bramshaw and Nomansland

S		M	T	W	T	F	S		M	Open 10am-5pm	
20		22	23	24	25	26	27		29	🚶 Wheelchair accessible	🅑 Off road car parking



## 87 Claire Wiltsher Painting

Award winning artist with solo show planned for 2022. Open studio private view Friday 19h 6-8pm, all welcome, email if coming. Atmosphere and light are the focus for her oil and mixed media paintings. A new book "Transitions" plus first book "Journeys" in full colour available. Winner of the Peoples Choice Award at St Barbe Museum & Art Gallery Open Exhibition 2021

**18 Romsey Road, Lyndhurst, SO43 7AA**

07867 304227 [clairewiltsher@gmail.com](mailto:clairewiltsher@gmail.com)

[www.clairewiltsher.com](http://www.clairewiltsher.com)

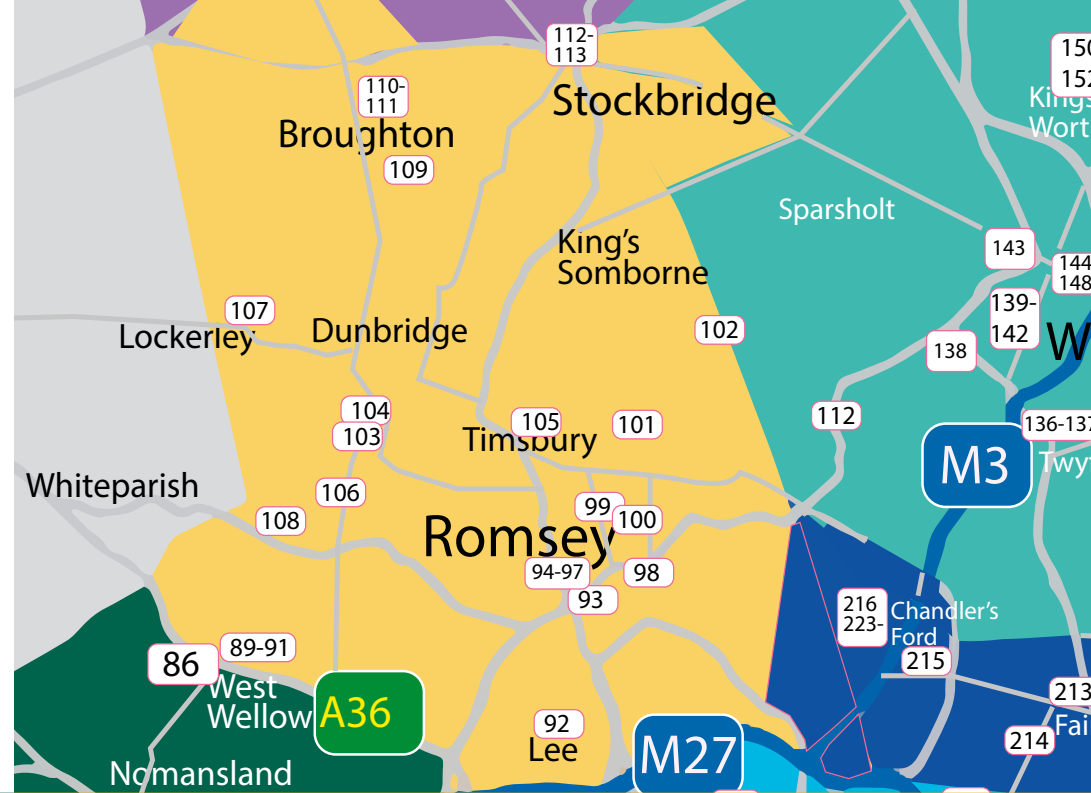
3-5 mins walk from Lyndhurst main car park and centre, turn right at Chinese restaurant down Romsey Road. House on right, walk through green gate to studio in garden.

S	S	M	T					S	S	M
20	21	22	23					27	28	29

Open 10am-5pm

♿ Flat path no steps

P Forecourt parking or Empress Road next right



## 88 Angels Farm Pottery Ceramics

An exhibition of reduction fired stoneware and porcelain studio pottery made by potter Jo Osman and her apprentices. Watch the potters at work in the studio and enjoy a cup of tea in the garden. Pottery open year round for sales and courses.

**Angels Farm Pottery, Pinkney Lane, Lyndhurst, SO43 7FE**

023 8028 4079

[angelsfarm@btinternet.com](mailto:angelsfarm@btinternet.com) [www.angelsfarm.co.uk](http://www.angelsfarm.co.uk)

We are at the junction of A35 Chapel Lane and Pinkney Lane. (Satnav will take you up the lane!) 7 minutes walk from the centre of Lyndhurst. Full directions available on our website.

S	S					T	F	S	S
20	21					25	26	27	28

Open 10am-4pm

♿ Wheelchair accessible

P Free parking outside pottery



## 89 Lesley Walker Painting

My figurative paintings and abstract landscapes in oils have a strong underlying rhythm, ambiguity & atmosphere. Please feel free to come & browse.

**Fleet Green, Lower Common Road, West Wellow, SO51 6BT**

01794 324820 [lesley@lesleywalkerart.com](mailto:lesley@lesleywalkerart.com)

<http://lesleywalkerart.com>

From the A36 between Ower and Plaitford, exit the roundabout into Lower Common Road at Wellow. The Yew Tree Studio at 'Fleet Green' is opposite the recreation ground.

S	S					S	S	M
20	21					27	28	29

Open 10am-5pm

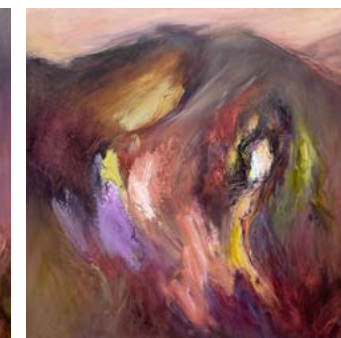
♿ Gravel, high step

P Drive & street

Full artist listings, mini-trail suggestions and maps to help guide you around are all available on our website  
[www.hampshireopenstudios.org.uk](http://www.hampshireopenstudios.org.uk)

Twitter @hantsopenstudio

Instagram & Facebook @hampshireopenstudio





## 90 The Monday Painters Group, mixed

Our talented and enthusiastic group of 34 produce an exciting range of new paintings in a variety of subjects and media; watercolour, oil, acrylic, pastel and pencil. Refreshments available.

**The Studio, Pyesmead Farm, Salisbury Road, Plaitford, Romsey, SO51 6EE**  
01794 323386

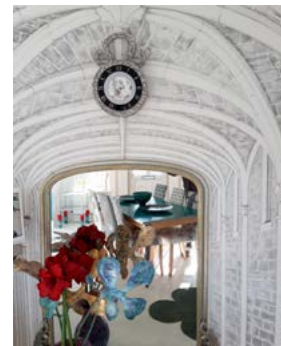
From J2 M27 Ower, take A36 Salisbury for approx. 3 miles. Turn right after Plaitford Village Hall on to unmade road. Follow pink arrows.

S	S	M	T	W	T	F	S	S	M
20	21	22	23	24	25	26	27	28	29

Open 11am-5pm

Wheelchair accessible

Parking available



## 94 Chris Watkins' Art House Group, mixed media

Unique & quirky 3 floor, 10 room art house, studio & garden jam-packed with 45 local artists' arts and crafts; a promise we have something for everyone. Child friendly with FREE cuppa & cakes so you can relax with mates or just browse for ideas.

**2 Albany Road, Romsey, SO51 8EE**

07722 482454 / 01794 522561 [chris.watkins1960@gmail.com](mailto:chris.watkins1960@gmail.com)  
[www.christinewatkinsart.com](http://www.christinewatkinsart.com)

Romsey centre next to Waitrose, behind Mole County Store, Alma Road car park. 2 minutes walk from Romsey train station.

S	S	M	T	W	T	F	S	S	M
20	21	22	23	24	25	26	27	28	29

Open 10.30am-7pm

Ground floor 1 level, 2 other floors steep stairs

Disabled parking can be easily arranged just call



## 91 Sarah Pearce & Guests Mixed media, craft

An assortment of hand crafted products: Glass, mixed media, wood turning, sewing, knitting, papercraft & more...Craft supplies for sale in the barn and refreshments served in cottage garden.

**Appledore cottage, Plaitford Common, Plaitford, SO51 6EE**  
07802 669104 [stampingsarah66@gmail.com](mailto:stampingsarah66@gmail.com)  
[www.sarahstampshack.co.uk](http://www.sarahstampshack.co.uk)

Take the A36, to Plaitford, on the brow of the hill turn right onto a gravel track, follow the pink signs to parking area. Additional parking at Plaitford village hall.

S	S	M	T	W	T	F	S	S	M
20	21	22	23	24	25	26	27	28	29

Open 11am-6pm

Gravel path/ 2 Steps and ramp

Offroad parking for 6 cars



## 95 Artseen Painting, mixed media

Paintings, textile art, Prints, cards and craftwork by Artseen members: Bob Blake, Lesley Bush, Martin Mitchell, Dot Mornington-west, Lynne Reeves, Janet Ferguson, Jill Rose Brennen, Yvonne Gregory, John Miller.

**Abbey United Reformed Church Hall, Romsey, SO51 8EL**  
01794 513106 [dot@mornington-west.com](mailto:dot@mornington-west.com)

The Abbey Reform Church Hall can be found immediately after going through the Arch just to the left of the TSB Bank on Romsey Market Place.

S	S	M	T	W	T	F	S	S	M
20	21	22	23	24	25	26	27	28	29

Open 10am-5pm

Wheelchair accessible

Nearby car parks



## 92 Romsey Art Group Group, mixed

Exhibition of paintings, pottery and sculpture with artists in residence. This year we are presenting the theme THE NATURAL WORLD showcasing the delights of flora, fauna, landscapes and seascapes that brighten our lives

**The Mountbatten Gallery, Lee, Nr. Romsey, SO51 9LG**  
023 80733574 [www.romseyartgroup.org.uk](http://www.romseyartgroup.org.uk)

From Romsey take A27 south turn right into Lee Lane (end of Broadlands Wall). Mountbatten Gallery on the right. Look out for pink signage.

					T	F	S	S	M
					25	26	27	28	29

Open 10am-4pm

Wheelchair accessible

Parking in gallery grounds only



## 93 Richard Paul, Leo Deville & guests Painting, ceramics

Over 250 original artworks in many display spaces reached from our tranquil garden haven, including painted British landscapes, sensual ceramics, ceramic jewellery, scrap wood village, metal trees, prints, cards...

**25 The Tyleshades, Romsey, SO51 5RJ**  
01794 521199 [richardpaulart@icloud.com](mailto:richardpaulart@icloud.com)  
[www.richardpaulart.co.uk](http://www.richardpaulart.co.uk) [www.leodeville.co.uk](http://www.leodeville.co.uk)

From Winchester Road railway bridges, turn into Botley Road, take 1st right (before co-op, Tadburn Road), then 4th right into The Tyleshades

S	S	M	T	W	T	F	S	S	M
20	21	22	23	24	25	26	27	28	29

Open 10.30am-6pm

Narrow gateway, 1 step into house

Street parking



## 96 Forest & Cove Group, mixed

A creative space to discover handmade treasures and inspiring classes by local artists and makers - Live demonstrations by resident goldsmith Rebecca Jackson & other local artists throughout the week. See our website & social media for details.

**17 Bell Street, Romsey, SO51 8GY**

07549 837309 [info@forestandcove.co.uk](mailto:info@forestandcove.co.uk) [forestandcove.co.uk](http://forestandcove.co.uk)  
Facebook & Instagram @forestandcoveromsey

Located on Bell Street in Romsey Town Centre

S		M	T	W	T	F	S		M
20		22	23	24	25	26	27		29

Open 9.30 - 4.30pm

One small step

Car park nearby



**97 Romsey Paint & Clay** *Painting, drawing, pottery*  
A group of friends - a potter & five painters - exhibit their diverse styles of painting & drawing alongside a collection of hand-thrown domestic stoneware  
**85 Greatbridge Road, Romsey, SO51 8FE**  
01794 513028 / 07789 041663  
info@romseypaintandclay.co.uk romseypaintandclay.co.uk

Go through Abbey Walk (pedestrian arch) from Lortemore Place car park. Turn right along Abbey Street then along the Horsefair and Cherville Street to find us on Greatbridge Road.

S	S	M	T			F	S	S	M
20	21	22	23			26	27	28	29

Open 10am-4pm  
♿ 6 steps up from road **P** Lortemore Place car park



**100 Jenny Morgan** *Painting, collage, drawing*  
Collage, acrylic, pastel, charcoal portraits, figure studies, wildlife, horses, buildings. Love a challenge. Collage work made from just torn paper, no paint. Commission me and I will paint anything.  
**9 Hogarth Close, Romsey, SO51 7TF**  
01794 514507 07771 993249  
jennymorgan@fiffyart.com www.fiffyart.com

From Romsey take A31 Winchester Road, under 2 railway bridges, up hill past garage and next left Braishfield Road. Turn left, Winterbourne Road, follow road as it sweeps left. Hogarth Close on left.

S	S	M	T	W	T	F	S	S	M
20	21	22	23	24	25	26	27	28	29

Open 10.30am-5pm  
♿ Narrow access not suitable **P** Street parking for wheelchairs



**98 Sara Barnes** *Painting, mixed media*  
Wild skies, windswept beaches, sunlit trees and colourful nudes. Sara's varied exhibition of over 50 pieces of recent work. Prices from £10 prints to £1000 canvasses all in a beautiful walled garden setting  
**Halterworth Cottage, Halterworth Lane, Romsey, SO51 9AE**  
01794 519544 07946 980414  
sarabarnesart@hotmail.com  
www.sarabarnesart.com

Either first on the left, or last on the right on Halterworth Lane, up a gravel drive.

S	S	M	T	W	T	F	S	S	M
20	21	22	23	24	25	26	27	28	29

Open 11.30am-6pm  
♿ Steps, no wheelchair access **P** Plenty of parking at venue

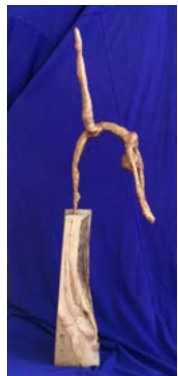


**101 50/50 Photo & Paint** *Group, photography, painting*  
Photographers Roy Brophy, Kev Sandall, Rachel Chappell, and painters Barry Fry, Gill Brophy and Colleen Cockcroft exhibit exciting new images and paintings with universal appeal. Don't miss this exhibition.  
**Sir Harold Hillier Gardens, Braishfield, Romsey, SO51 0QA**  
info.hilliers@hants.gov.uk  
www.hants.gov.uk/thingstodo/hilliergardens

The Gardens are situated two miles north-east of Romsey in Hampshire. Free onsite parking with limited accessible parking bays. No entry charges to exhibition...

S	S	M	T	W	T	F	S	S	M
20	21	22	23	24	25	26	27	28	29

Open 10am-5pm  
♿ Wheelchair accessible **P** Free car park



**102 Farley Artists** *Group, painting, textiles*  
A few of your favourite things! Set in a 12th century church in a stunning countryside location seen through the eyes of a group of local artists to include: Frinny Farthing (acrylic landscapes), Sue Mclachlan (pet portraits), Steve Neal (photography), Peter Radcliffe (watercolour landscapes) and Tanya Williamson (textile artist). Tea, coffee and homemade cakes as well!  
**St Johns Church, Farley Chamberlayne, Braishfield, SO51 0QP**  
07818 062559 sue@animalmagicart.com  
www.animalmagicart.com farm3.clik.com/frinnyfarthing  
www.marmaladeskiesdesigns.co.uk www.copperlane.uk

From Romsey to Hursley B3090 turn left after Hursley sp Slacksteads/Farley Chamberlayne. Follow the signs for Farley Church.

				W	T	F	S	S	M
				24	25	26	27	28	29

Open 10am-4pm except weekends until 5pm  
♿ Wheelchair access ramp **P** Plenty of parking



**99 Wendy & Rosalind Jelbert,**  
**Paul Robinson** *Painting, mixed media*  
A modern & traditional mix of media, styles & subjects of our own family. Original works, prints, Wendy's instructional art books & DVDs as seen on television & cards for sale.  
**25 Richmond Lane, Romsey, SO51 7LB**  
01794 518211 art@wendyjelbert.co.uk  
www.wendyjelbert.co.uk  
Take A31 Romsey to Winchester Road, After Sun Inn near the bridge on left, turn into Cuperham Lane. Take 3rd turn right into Richmond Lane.

S	S	M	T			T	F	S	M
20	21	22	23			25	26	27	29

Open 11am-5pm  
♿ No wheelchair access **P** Park in Brook Way, not in our drive please







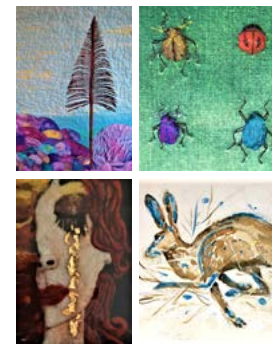
## 109 Roake Farm Studio Paintings, mixed media

Anne Ridsdale, Christine O'Sullivan, Christine Marlow. Painters working individually on a variety of subjects largely inspired by our immediate environment.

**Roake Farm Studio, Horsebridge Road, Broughton, SO20 8BA**  
07950 026270 [anne@ridsdales.com](mailto:anne@ridsdales.com) [www.annart.co.uk](http://www.annart.co.uk)

*Roake Farm is on the south side of Broughton, on the road to Houghton. Entrance on the left at the end of the village.*

S	S		W		S	S	M	Open 11am-4pm	
20	21		24		27	28	29	Gravel, wheelchair access downstairs	P Off road parking



## 112 QuARTet & Challenge Group

Mixed media, quilting, embroidery

They are the "new kids on the block", 8 artists, 8 different fascinating styles, different media (i.e., paper, paint, quilts, embroidery) They challenge themselves, move out of their comfort zone; the result : their exhibition!! Don't miss it

**Stockbridge Town Hall, High Street, Stockbridge, SO20 6HE**  
07876 464208 [stockbridgetownhall@gmail.com](mailto:stockbridgetownhall@gmail.com)  
[www.qu-art-et.co.uk](http://www.qu-art-et.co.uk)

*Stockbridge Town Hall is a major feature on the East side of the High Street*

S	S	M	T	W					Open 11am-5pm	
20	21	22	23	24					Wheelchair accessible lift	P Street Parking

## 110 Broughton Village Artists

Group, mixed

45 acclaimed artists all under one roof displaying their own work - Paintings, Drawings, Cards, Photography, Jewellery, Ceramics, Pottery, Textiles, Sculptures, Wood Turning & Carving, also a team working in a range of glass disciplines & Leather Work. Broughton Village Hall will be offering refreshments and snacks in conjunction with the Broughton Village Shop (also located with the Village Hall). Families are most welcome! [www.broughton.shop](http://www.broughton.shop)



**Broughton Village Hall, High Street, Broughton, SO20 8AX**  
01794 301211 / 07836 731333 [info@broughtonvillage.art](mailto:info@broughtonvillage.art)  
[www.broughtonvillage.art](http://www.broughtonvillage.art) Facebook @BroughtonVillage.ART  
Instagram @broughtonvillage\_art

*The Village Hall is in the centre of Broughton, 14 miles from Winchester & Salisbury, 10 miles from Andover & Romsey.*

S	S	M	T	W	T	F	S	S	M	Open 10am-5pm	
20	21	22	23	24	25	26	27	28	29	Wheelchair accessible	P Large free car park



## 113 Renate West

Acrylic painting

She exhibits in London (Brick Lane Gallery), Rome & Milan, but Renate will always appreciate the support she received(es) over the years from collectors / visitors from her local area.

"Her work is colourful, dynamic, thought provoking, exciting, it has soul. I recognise her work anywhere. I love her work, it is so varied, not one painting is the same & yet recognisable as hers." These are verbal & written comments about Renate's work from collectors & visitors.

**Stockbridge Town Hall, High Street, Stockbridge, SO20 6HE**

01264 889507 / 07876 464208  
[stockbridgetownhall@gmail.com](mailto:stockbridgetownhall@gmail.com)  
[www.stockbridgetownhall.co.uk](http://www.stockbridgetownhall.co.uk)  
[www.renatewest.com](http://www.renatewest.com)

*Stockbridge Town Hall is a major feature on the East side of the High Street*



S	S	M	T	W						
20	21	22	23	24						

Open 10am-5pm  
Wheelchair accessible lift  
P Street parking

## 111 North End Studio Painting, cards, jewellery

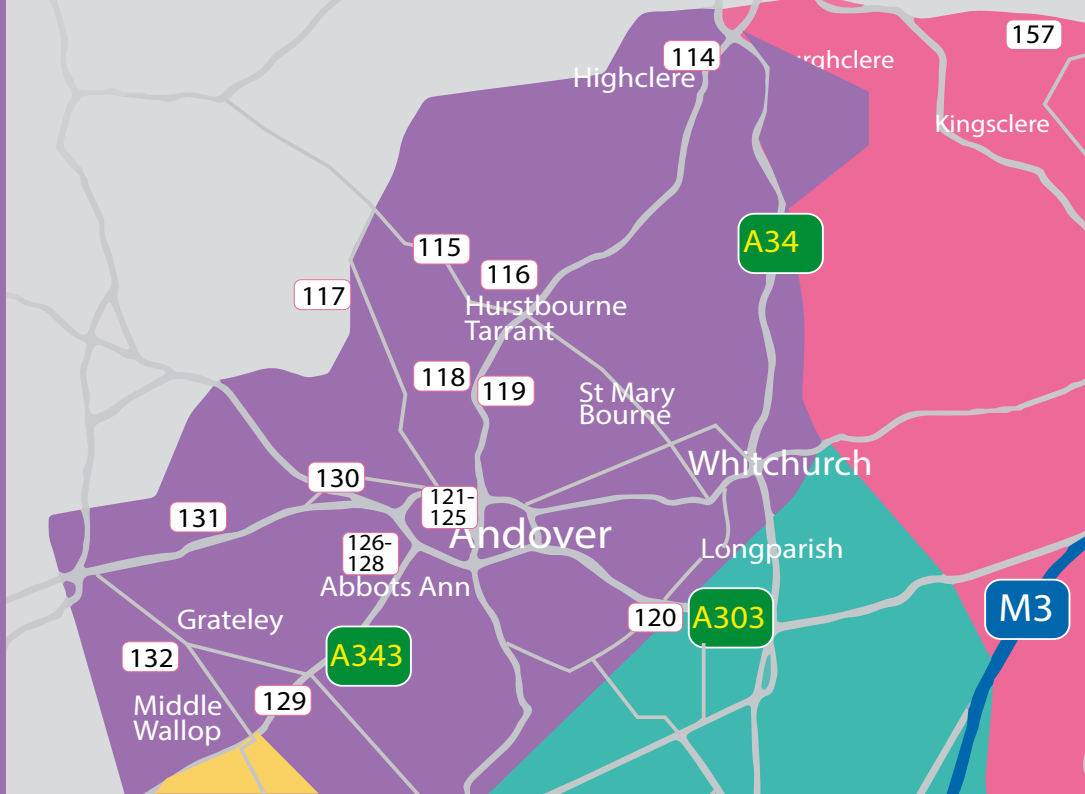
Mother and daughter artists exhibiting together. Come and visit us in our garden studio and see Ferelith Molteno's stunning paintings and cards, and Vanessa Pease's beautiful silver jewellery.

**North End Cottages, North End, Broughton, SO20 8AN**  
01794 301379 / 07885 472366 [peasevm@gmail.com](mailto:peasevm@gmail.com)  
[www.vpjewellery.co.uk](http://www.vpjewellery.co.uk)

*One mile west of Stockbridge turn LEFT to Broughton. We are on the corner of School Lane & High Street. Studio up steps in garden. Follow pink arrows & signs.*

S	S	M	T	W	T	F	S	S	M	Open 10am-5pm	
20	21	22	23	24	25	26	27	28	29	No wheelchair access	P Car park in School Lane





## 116 Ian Peill Oil painting

Painting exclusively in oils Ian Peill is exhibiting in his studio a variety of landscape and skyscape paintings including birdlife, local chalkstream river scenes and reflections after Monet.

**Southside, Horseshoe Lane, Ibthorpe, SP11 0BY**

01264 736314 ianrpeill@gmail.com

*In the village of Ibthorpe travelling west turn first right down Horseshoe Lane. Southside is on the right after passing a yew hedge with parking on the gravel forecourt.*

S				W		S		M	Open 10am-5pm	
20				24		27		29	Gravel path. No wheelchair access	Gravel forecourt



## 117 Jon & Susie Harries Silver, print, painting

Husband and wife team who create beautiful hand-crafted silver jewellery and expressive art work including print, mixed-media, acrylic and oils.

**Little Lovington, Upper Chute, Andover, SP11 9EH**

01264 730307 suearty@hotmail.co.uk

*If following the Sat Nav, ignore the last turning into Tibbs Meadow. We are the bungalow opposite St Nicolas Church.*

S	S	M	T	W	T	F	S	S	M	Open 10am-5pm	
20	21	22	23	24	25	26	27	28	29	Gravel path	Street & drive



## 114 Made in the Hood Group show, mixed

A colourful display of Basketry, Ceramics, Glass, Jewellery, Paintings, Silk, Sculpture, Wire lace and Wood from talented local artists and craftspeople, in the newly refurbished Westridge Studio.

**Westridge Studio, Andover Road, Highclere, RG20 9QS**

07786 956051 madeinthehood8@gmail.com

www.madeinthehood.co.uk

*Westridge Studio is on A343 between Highclere Red House and Village Hall. Access the car park from Star Lane, Highclere*

						S	S	M	Open 10am - 4pm	
						27	28	29	Ground floor	Studio car park



## 118 Mixed Media Trio Jewellery, mixed media, textiles

Sue Jones, Fiona Seager & Barry Jones : A selection of silver jewellery, art & textile work Made in the village of Hurstbourne Tarrant but will be exhibiting this year at Oaktrack Smallholding which will offer refreshments & cream teas

**Oaktrack Smallholding, Charlton Down, Andover, SP11 0JA**

07584 083472

fi@fisdesign.co.uk www.fisdesign.co.uk

*Oaktrack Smallholding is located next to the Hare and Hounds pub on Charlton Down . Just off the A343 between Hurstbourne Tarrant and Enham Almain*

S	S			W	T	F	S			Open 10am-4pm	
20	21			24	25	26	27			Wheelchair accessible	Car park



## 115 Rebecca Maynard Ceramics

Visit my tranquil, rural studio to see my latest work which is inspired by light, landscape & nature; from small tactile birds of blue to large bold sculptural heads.

**3 Hillside Cottages, Upton, Andover, SP11 0JH**

01264 736521 / 07816 834605

maynardceramics@msn.com

*From Hurstbourne Tarrant (A343) take the turning to Upton. On reaching Upton take the first left up the hill. The studio is on the left.*

S	S	M	T	W	T	F	S			Open 11am-5pm	
20	21	22	23	24	25	26	27			Gravel path, low step	Drive parking



## 119 Jo Arkell Ceramics, glass jewellery

Hot Pots & Cool Jewels - Using stoneware and porcelain clay, thrown on the potter's wheel and gas fired. Venetian glass lampwork to make bead jewellery set in silver

**Glendale Woodhouse, Smannell, Andover, SP11 6JH**

07791 731758

jo@sparkell.com www.sparkell.com

*Turn into Woodhouse from Smannell Rd and park in designated area on left, then walk 150 yds to studio Glendale at end of lane.*

S	S	M	T	W	T	F	S	S		Open 11am-4pm	
20	21	22	23	24	25	26	27	28		Gravel path/ wheelchair access	Designated parking place



## 120 Paula Vize Oils, acrylics, watercolour

Contemporary rural wildlife and domestic animal paintings. Portraiture in my signature watercolour. A marvellous opportunity for enthusiasts of my work to engage with my creative space. Look on Instagram for workshop dates

**Walnut Tree House, Longparish, SP11 6QQ**

01264 720418 pvize@btinternet.com www.paulavize.co.uk

Long village - travel to the far end from the A303. From Whitchurch turn left at Hurstbourne Priors, we are just around the corner as you enter Longparish. Walnut tree house.

S	S	M				F	S	S	M
20	21	22				25	27	28	29

Open 11am - 5pm (except 22nd & 26th 1pm - 5pm)

Gravel drive, wheelchair Drive access



## 123 Eclipse Photography Outdoor Workshops

Choice of 3 hour in person workshops for any level, using digital camera or phone camera. Please book in advance from website. Workshop fees from Online £17; In-person £27. Carers/guardians can attend in-person workshops for free. £5 from each booking goes towards The Alzheimers Society.

**No 78 Coffee Shop, High Street, Andover, SP10 1NG**

07880 310775 eclipsephotographyandtraining@gmail.com

www.eclipsephotographyandtraining.co.uk

Meeting point outside No 78 Coffee Shop at the top of the High Street, close to St Mary's church and The Angel public house.

S	S	M	T						
20	21	22	23						

9.30am & 1.30pm 20th - 23rd

Short walk / access friendly route

Nearby car parks

# IN BETWEEN ERS

CAS SUMMER SHOW

20TH AUG - 3RD SEP

CHAPELARTSSTUDIOS.CO.UK @CASARTISTS

## 121 Chapel Arts Studios Group, mixed media

CAS associates present their annual group exhibition, Inbetweeners, inviting visitors to discover and engage with the artists and their diverse and innovative working practices.

Artists participating:

Sophie Willoughby, James Aldridge, Christine Dodd, Deborah Porter, Elizabeth Hammond, Caroline Perkins, Tony Spencer, Marta Lichocinska, Lou Dixon, Peter Driver, Michael Johnson, Katt Grover, Karen Wood, Emily Marsh, Tina Sanchez

**St Mary's Chapel, New Street, Andover, SP10 1DP**

01264 608115

info@chapelartsstudios.co.uk

chapelartsstudios.co.uk

From the Town Centre (Market Square), walk up the High Street, go up the steps towards St Mary's Church and turn left into the cemetery. Take the main path through the cemetery and you will see the Chapel in front of you.

S	S	M	T	W	T	F	S	S	M
20	21	22	23	24	25	26	27	28	29

Open 11am-4pm

Wheelchair accessible

Nearby car park



## 124 Unity Art Studio & Gallery Group, mixed

Caroline Perkins and Maija Liepins invite you to visit and enjoy the creative works of 6-8 artists. We are showcasing a variety of artistic disciplines in our working studio.

**Unit 9 Chantry Way Chantry Centre, Andover SP10 1LX**

unityartstudio9@gmail.com

www.instagram.com/unity\_art\_studios/

By public transport or car, we are within walking distance from Andover train and bus station, as well as all town centre car parks. We recommend the Chantry Centre as the closest car park Andover is adjacent to the A303

S	S	M	T	W	T	F	S	S	M
20	21	22	23	24	25	26	27	28	29

Open 10am-4pm

Wheelchair accessible

Nearby car park



## 125 Keith Pattison Painting, printmaking

Painting, prints, cards and other items. My work is an expression of my response to the Landscape rather than a literal representation.

**White Cottage Studio, 15 Winchester Gardens, Andover, SP10 2EH**

01264 392411 07955 344094

keith.pattison@ntlworld.com www.keith-pattison.co.uk

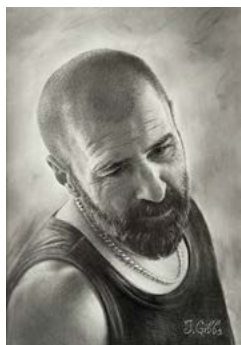
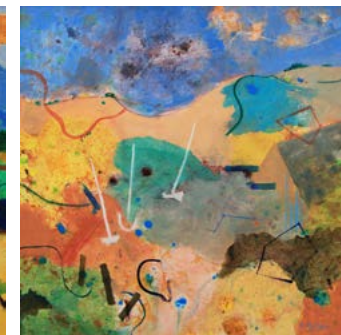
From A303 take A3057 (Stockbridge) exit and turn towards Andover. Winchester Gardens is first on right just past the Golf Club.

S	S	M	T	W	T	F	S	S	M
20	21	22	23	24	25	26	27	28	29

Open 10am-5pm

Not suitable for wheelchairs

Ample parking on driveway



## 122 Andover Arts Group, mixed

Andover Arts presents a vibrant exhibition of members work in a variety of media. Held in Andover Museum enjoy the free bonus of a visit to this interesting museum.

**Andover Museum and Museum of the Iron Age, 6 Church Close, Andover, SP10 1DP**

01264 323813 andoverartsociety@gmail.com

www.hampshireculture.org.uk/andover-museum

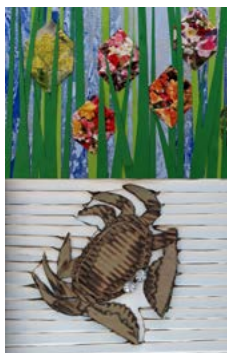
From inner ring road, follow signs for the town centre & brown signs for Andover Iron Age Museum. On foot from town centre follow blue signs in the High Street.

S	S	M	T	W	T	F	S	S	M
20	21	22	23	24	25	26	27	28	29

Open 10am-4pm

Wheelchair accessible

Small car park at venue



## 126 Liz Dell Collage, pyrograph, print, mixed

Representational and abstract work, cards and prints.

**The Old Exchange, Duck Street, Abbotts Ann, SP11 7AZ**  
01264 711051 [lizdell.48@gmail.com](mailto:lizdell.48@gmail.com)  
[www.qu-art-et.co.uk](http://www.qu-art-et.co.uk)

A343, turn at St John's Cross, pass pub and shop, almost opposite village hall, on the left next to no38

S	S	M				F	S	S	M
20	21	22				26	27	28	29

Open 11am-6pm

♿ Access 2 steps

P Street parking



## 130 Jen Best Textile Art Textiles, felting, weaving

Bright and colourful, woven, stitched, and felted textile art. Jen creates a variety of freeform textile objects, inspired by trees, the sea, the sky, and the spirits of the Earth.

**Studio 11, Fairground Craft Centre, Weyhill, SP11 0QN**  
01264 748070 [jen.best@hotmail.co.uk](mailto:jen.best@hotmail.co.uk)  
[www.jenbesttextileart.com](http://www.jenbesttextileart.com)

Free parking. Good public transport links. Off the A342 between Andover & Ludgershall. From A303 take the Malborough exit & follow the craft centre signs.

S	S	M	T	W	T	F	S		M
20	21	22	23	24	25	26	27		29

Open 10am-5pm

♿ Wheelchair accessible/ ramps/disabled toilets

P Plentiful free on site parking



## 127 Chris Davis Oil, acrylic, mixed

Paintings in oil, acrylic, and mixed media. Landscape and figures predominate. Some copies of the Masters are also part of my exhibition.

**Pitt House, Duck Street, Abbotts Ann, SP11 7BG**  
07747 777813 [chrisdavis710@gmail.com](mailto:chrisdavis710@gmail.com)  
[www.pinterest.co.uk/chrisdavis710](http://www.pinterest.co.uk/chrisdavis710)

At the centre of Abbotts Ann. Driveway to Pitt House is just below the bus stop up the hill from The Eagle Pub, on the opposite side of the street.

S	S					S	S	M
20	21					27	28	29

Open 10am-5pm

♿ Wheelchair accessible

P Drive parking



## 131 Susan Hawkins & Sylvia French Painting

Susan - Abstract and vibrant still life, landscapes and floral paintings in pastels, acrylics and oils. Sylvia - Expressive watercolour, acrylic and pastels works of seascapes, flowers and country scenes.

**Well Cottage, Thruxton, Near Andover, SP11 8NF**  
01264 351920 [sylvia.french@hotmail.co.uk](mailto:sylvia.french@hotmail.co.uk)

West bound A303 Thruxton village exit, turn left straight through village, left at phone box Cottage 600 yards on left. East bound A303 exit, cottage 200 yards on right.

S	S				T		S	M
20	21				25		28	29

Open 10am-4pm

♿ Narrow access path

P Ample street parking



## 128 Kate Bennett Painting, drawing, cards

A variety of watercolour paintings. Based on botanical observations and imaginations.

**2, Catherine's Walk, Abbotts Ann, Andover SP11 7AS**  
01264 712028

[kates.paintbox@gmail.com](mailto:kates.paintbox@gmail.com) <http://katebennett.art>  
Easy distance from A303 and A343. Turning in to Abbotts Ann at the Farleigh crossroads, pass new school on your left, we are second turning on the right, second house on your right.

S	S				T	F	S	S	M
20	21				25	26	27	28	29

Open 11am-5pm

♿ Wheelchair accessible

P Plenty of street parking



## 132 Diane Haddon-Moore Painting, mixed media

Using a contemporary approach Diane transforms everyday subjects & landscapes into striking, vibrant & beautiful paintings. A colourist, Diane's love of bright, dramatic hues finds vivid expression in her work encouraging the viewer to see and explore subjects in a new light.

**High View, Mount Hermon Road, Palestine, SP11 7EW**  
07765 003018 [www.dianehaddonmoore.co.uk](http://www.dianehaddonmoore.co.uk)

Access from A303 or from Stockbridge (A30) or Salisbury (A434). Use postcode in Sat Nav to bring you to road. Look for HOS signs & artists signs to find studio.

S	S	M	T	W	T	F	S	S	M
20	21	22	23	24	25	26	27	28	29

Open 10am-5pm

♿ Gravel driveway/ flagged paths

P Driveway & quiet lane parking



## 129 Army Flying Museum Painting, watercolour

Pure watercolours by Sue Hyslop. A range of subjects including animals, flowers, boats and birds. Framed and mounted originals, prints and cards. Separate entry to Army Flying Museum.

**Army Flying Museum, Middle Wallop, SO20 8FB**  
07802 743243

[site.manager@armyflying.com](mailto:site.manager@armyflying.com) [www.armyflying.com](http://www.armyflying.com)

From Andover/A303: A343 towards Salisbury. Venue on left 300m after Army base entrance. From Salisbury: A343 towards Andover. On right 600m after Middle Wallop crossroads.

S	S								
20	21								

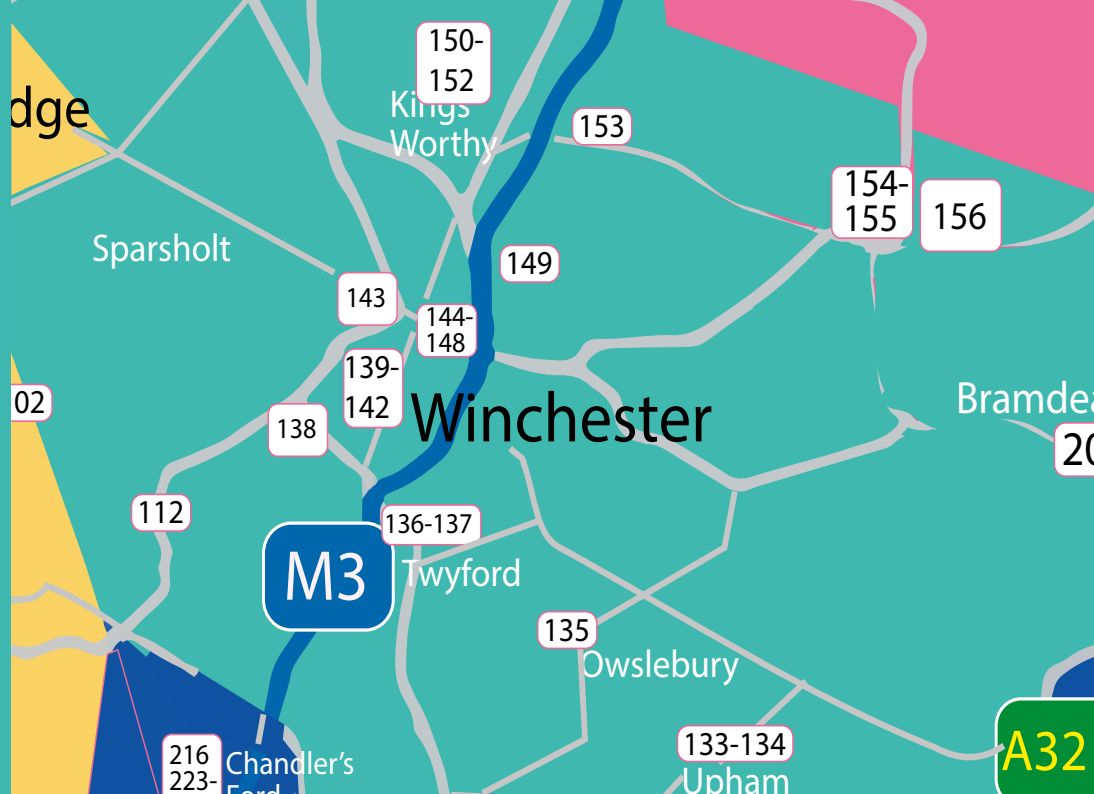
Open 10am-4.30pm

♿ Wheelchair accessible

P Museum carpark with disabled spaces

Full artist listings, mini-trail suggestions and maps to help guide you around are all available on our website  
[www.hampshireopenstudios.org.uk](http://www.hampshireopenstudios.org.uk)

Twitter @hantsopenstudio  
Instagram & Facebook @hampshireopenstudio



## 135 Granary Studio Painting, textiles

A variety of disciplines offered by those who teach and learn at the Granary Studio, including Susan Chapman, Caroline Bell, Sue Dove, Bailey Curtis, Irene Belcher, Ursula Dawson, Nikki Hurrell and Jane Perrott.

**The Granary, Owslebury Farm, Main Road, Owslebury, SO21 1LU**  
 01962 777480 07855 589874  
 susichap@hotmail.co.uk www.granarystudio.com

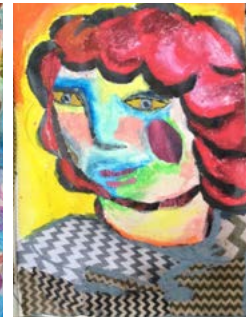
*The Granary is in the centre of Owslebury opposite the church. Look for bunting along the front wall.*

			T	W	T	F	S	S	M
			23	24	25	26	27	28	29

Open 10am-5pm

 Access to main studio, 2 steps to rest & toilet

**P** Street parking



133 Ping & Lily plus Guests Textiles, homeware, painting


Handmade original textile artwork, cushions and lampshades using freehand motion embroidery with Liberty print fabrics. Guest artists using a variety of disciplines including oil painting, line drawing and surface design.

**The Studio, Holm House, Church Street, Upham, SO32 1JH**  
**07779 718833   [lily@lilygreenstudio.co.uk](mailto:lily@lilygreenstudio.co.uk)**  
**[www.pingandlily.co.uk](http://www.pingandlily.co.uk)**

*From Lower Upham B2177 take turning north to Upham. After approx 1 mile past school, then church & telephone box. Holm House is opposite the village duck pond.*

S	S			W	T	F	S	S	
20	21			24	25	26	27	28	

Open 10am-4.30pm

 Gravel driveway, steps inside

136 Catherine Ruth Church *Painting, mixed media*

Catherine Ruth Church is based near Winchester, Hampshire; she takes her inspiration from the flowers, plants and natural forms that she finds in gardens and on walks around the area and beyond.

**Hockley House, Church Lane, Hockley, nr Twyford, SO21 1NT**  
07711 809249 enquiries@platform4.org  
www.catherineruth.com

*By appointment. Plenty of parking by my studio*

S	S	M			T	F	S	S	M
20	21	22			25	26	27	28	29

11-4pm 20th- 22nd & 25th - 29th by Appointment

 Flat, accessible  Parking available



## 134 Richard Green Painting

A selection of my recent oil paintings including figurative still life and semi-abstract landscapes

**The Studio, Holm House, Church Street, Upham, SO32 1JH**  
**07890 996676   richardgreen.flintwallstudio@gmail.com**  
**Instagram @richardgreenartist**

*From Lower Upham B2177 take turning north to Upham. After approx. 1 mile past school, then church & telephone box. Holm House is opposite the village duck pond.*

S	S			W	T	F	S	S	
20	21			24	25	26	27	28	

Open 10am-4.30pm

**P** Street or drive



## 137 Just us four Painting, textiles, photography

Artists Jeannie Pakenham & Veronica Bliss. Contemporary watercolour, collage and acrylic ink paintings, originals, prints and cards. Helen Murchie textile artist, tweed/cork bags, and homeware. Pete Whieldon stunning wildlife photography.

**Compton and Shawford Parish Village Hall, SO21 2AA**  
jeannie20@sky.com

comptonshawford-pc.gov.uk/about/parish-hall/  
Shawford Hall is a short walk from, Shawford Railway Station & off J11 of M3. Bus  
passengers can use the Bluestar No 1 Southampton to Winchester service.

						F	S	S	M
						26	27	28	29

Open 10am-4pm

 Wheelchair access, no steps, toilets



## 138 Wendy Bramall

Illustration, paintings, prints

Natural history illustration in different mediums. Stamp designs and other commercial work as well as lino prints and commissioned paintings. Greetings cards and prints available.

**4 Partridge Down, Winchester, SO22 4HL**

wendy.bramall@btinternet.com

www.wendybramall.co.uk

From Badger Farm Road take Oliver's Battery Road South past the shops and go straight on where the road bends to the right down to Priors Way. Partridge Down is first on the left.

			T	W	T	S	S	M	
			23	24	25	27	28	29	

Open 12-5pm

Not wheelchair accessible

Free street parking



## 139 Charlotte Rose & Donna McGhie

Painting, mixed

This year Charlotte welcomes Donna to the studio. Landscape paintings, mixed media pieces, sculpture. Variety, colour and fun. Nature-inspired. Live demonstrations. Get involved!

**22 Fox Lane, Winchester, SO22 4DY**

07951 772576 www.charlotte-rose.co.uk

www.artandmurals.co.uk

From M3 (J11) follow signs for Romsey, then city centre. Turn right into Stanmore then right into Minden Way. Turn left into Fox lane to find us on the right.

S	S	M				F	S	S	M
20	21	22				26	27	28	29

Open 10am-5pm (4pm BH Monday)

Step into studio

Street parking

## 140 Linda Bee

Painting, collage, felt

See Linda's abstract oil paintings alongside her new range of hand-felted scarves, painted canvas cushions and tote bags. Speak to Linda about her established drawing classes and craft workshops.

**1 Airlie Road, Winchester, SO22 4NQ**

01962 864955 / 07879 557868

lindabee.artist@hotmail.co.uk www.lindabee.co.uk

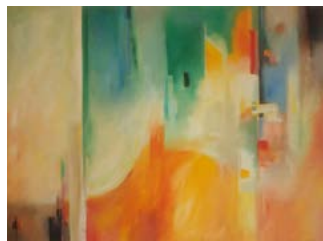
South of city centre: take B3335 Southgate Street/St. Cross Road. Turn west into Ranelagh Road, after railway bridge begins Airlie Road. No. 1 is 100 yards on right.

S	S					T	F	S	S	M
20	21					25	26	27	28	29

Open 11am-6pm

Gravel drive, 2 steps into house

Driveway parking



## 141 2d3dSouth

Group, mixed

2d3dSouth are delighted to return to show our work at the University of Winchester in their beautiful new gallery, The West Downs Gallery.

**West Downs Gallery, University of Winchester, Romsey Road, Winchester, SO22 5FT**

01962 841515 www.2d3dSouth.org

The West Downs Gallery is set back from the Romsey Road, directly opposite the road entrance to the Royal Hampshire County Hospital.

S	S	M						S	S	M
20	21	22						27	28	29

Open 10am-5pm

Venue is on one level only

2 spaces signposted to the rear main building



## 142 Clare Goodman & Brian Hayward

Acrylic, oil, watercolour, wood

I am an impressionist artist whose inspiration is light and colour. Also at this venue Hayward Guitars Workshop, hand built instruments. Private view Friday 19th August 6.00 - 8.00 all welcome, please email if coming.

**West End Studio, West End Close, Winchester, SO22 5EW**

01962 865515 claregoodmanartist@gmail.com info@haywardguitars.com

www.claregoodmanartist.co.uk www.haywardguitars.com

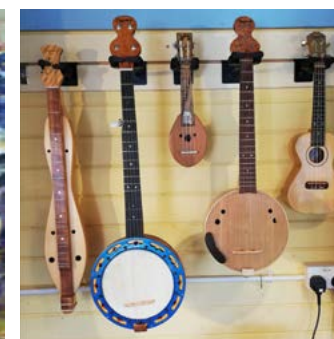
Enter Winchester on the A3090 past hospital on right, left after prison into West End Terrace, left into West End Close. SO22 5EW.

S	S	M	T	W	T	F	S	S	M
20	21	22	23	24	25	26	27	28	29

Open 10am-5pm

Steps, no wheelchair access

Free parking outside studio



## 143 Gemma Wootten

Sculpture

Sculptures of wild and domestic animals for garden or home display in weatherproof galvanised wire. I add colour, if required, with enamel spray paint which is very effective.

**2 Grovelands Road, Winchester, SO22 5JU**

01962 853518 gandt@wiredup.plus.com

www.wireanimalsbygemma.co.uk

Outskirts of Winchester off the Stockbridge Road. At Weeke turn into Dean Lane, then Teg Down Meads. Top of hill to Grovelands Road.

S	S	M	T	W	T	F	S	S	M
20	21	22	23	24	25	26	27	28	29

By appointment, please phone if visiting

Wheelchair accessible

Drive parking







## 150 Emma Lowres Painting, prints, cards

Expressive oil paintings of landscapes, seascapes and still life. Inspired by the countryside and coast of Hampshire and beyond. Commissions welcome. Giclee prints and greetings cards also available.

**17 Frampton Way, Kings Worthy, SO23 7QE**

07913 519568 [emmalowres@gmail.com](mailto:emmalowres@gmail.com)

[www.emmalowres-art.co.uk](http://www.emmalowres-art.co.uk)

From A33 turn onto Lovedon Lane. Take 2nd left onto Ramsay Road, next left onto Tovey Place and then left onto Frampton Way - follow pink signs to number 17

S	S	M	T	W						S	S	M
20	21	22	23	24						27	28	29

 Open 10am-5pm

Small step up into conservatory

Free street parking



## 152 Sue Tinkler Art Glass Glass

Bespoke Art glass kitchen splashbacks, wall art, sculptural waves, bowls & jewellery. Inspired by our natural & industrial heritage. Commissions welcome. Courses. Garden studio open at other times by appointment. Online shop.

**19 Bull Farm, Lovedon Lane, Kings Worthy, SO21 1AQ**

07762 928771 [sue@suetinklerartglass.co.uk](mailto:sue@suetinklerartglass.co.uk)

[www.suetinklerartglass.co.uk](http://www.suetinklerartglass.co.uk)

At junction of Lovedon Lane and Springvale Road is King Charles Pub, take farm track opposite this junction, keep left at fork, look for metal bulls head on building.

S												M
20												29

 Open 10am-5pm

Single step

Parking next to studio, 5 spaces



## 151 Strange TimesQuests Group, mixed

Thirty six artists from Winchester and beyond complete monthly creative Quests 'alone, together'. Networking just by e-mail means many of us have never met! Varied media, slideshows and demonstrations. Refreshments available.

**St Mary's Church Hall, Fraser Road, KingsWorthy, SO23 7PJ**

07879 693372 [terryalinehan@gmail.com](mailto:terryalinehan@gmail.com)

[strangetimesquest.wordpress.com](http://strangetimesquest.wordpress.com)

Hall is located next to Springvale Stores / pharmacy. Directly opposite bus stop for Spring bus from Winchester city centre.

						F	S	S
						26	27	28

 Open 10am-4pm

Wheelchair accessible

Street & car park by shops



## 153 Jonathan Chapman Paintings, prints, cards

Figurative painting and illustration; colourful landscapes and cityscapes inspired by Winchester and popular destinations from around the world. Original artwork, prints, cards and gifts.

**4 Couch Green, Martyr Worthy, Winchester, SO21 1EA**

07825 637331 [hello@illustrationbyjonathan.co.uk](mailto:hello@illustrationbyjonathan.co.uk)

[www.illustrationbyjonathan.co.uk](http://www.illustrationbyjonathan.co.uk)

Traveling along the B3047 to Alresford from Kings Worthy, look for the small car park after turning for Couch Green. Cross the playing field & follow pink arrows

S	S	M	T	W	T	F	S	S	M
20	21	22	23	24	25	26	27	28	29

 Open 10am-5pm

Steps, uneven path

Car park nearby



J Chapman venue 153 (right)



## 154 Salisbury Arts Scene Group, mixed

Art to Inspire! Mixed media, acrylic, oil, watercolour, photography, wood, glass, sculpture. Artists - AM Thomas, Annie George, Esther Brown, George Shapland, Geraldine McLoughlin, Jane Walker, Karen Welsh, Lucinda Nicholas, Sally Edwards, Will Richardson. Private View: Friday 19th 3-8pm, Meet the artists. Refreshments. Visit our website for full details

**The Light Room, The Dean, Alresford, SO24 9BQ**

07870 495 225 [info@salisburyartscene.co.uk](mailto:info@salisburyartscene.co.uk)

[www.salisburyartscene.co.uk/exhibitions/hos-2022](http://www.salisburyartscene.co.uk/exhibitions/hos-2022)

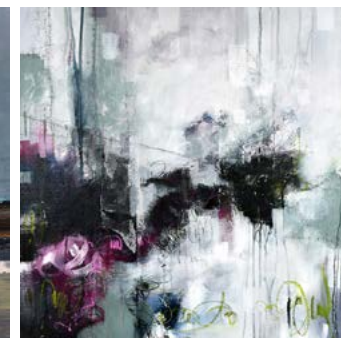
Approaching Alresford on the B3047 from the west take first left turn onto The Dean at the bottom of West Street. The Old Chapel is immediately on the left.

S	S	M	T									
20	21	22	23									

 Open 10am-5pm

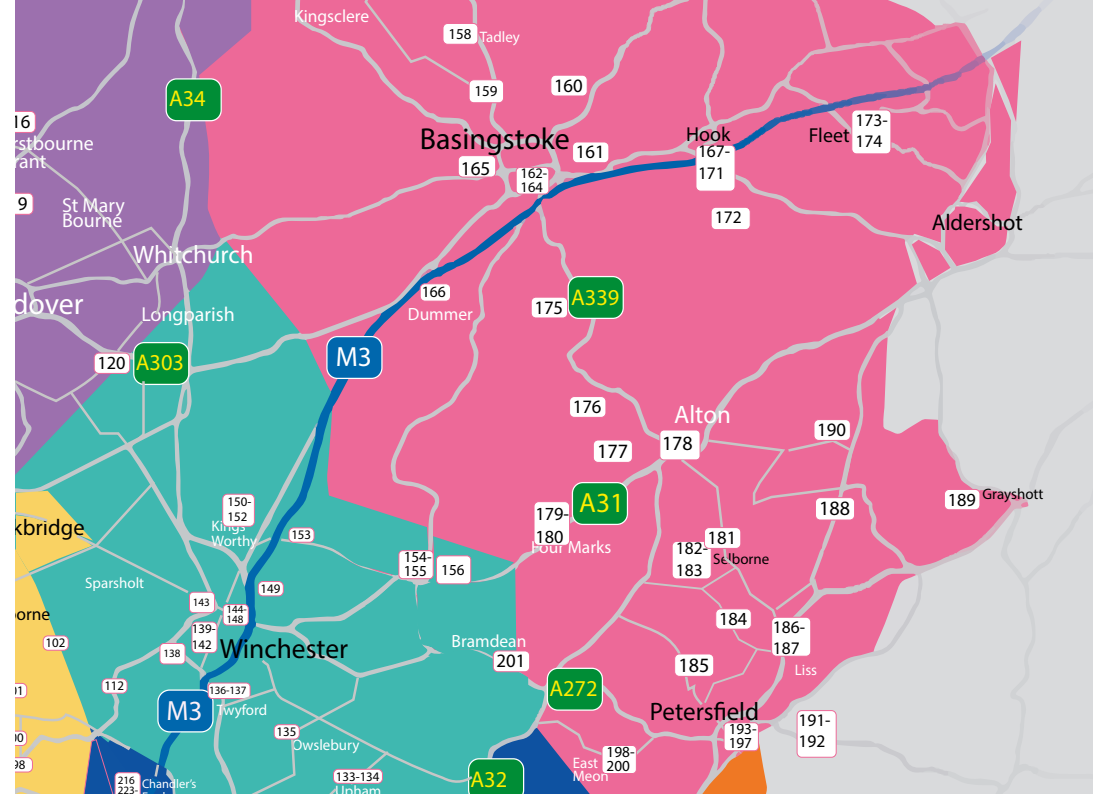
Wheelchair accessible

Alresbury Park & street parking



					T	F	S	S	M
					25	26	27	28	29

**P** Street & local car parks



S	S	M				F	S	S	M
20	21	22				26	27	28	29

**P** Drive or village hall

S	S	M	T	W	T	F	S	S	M
20	21	22	23	24	25	26	27	28	29

**P** On site parking

S	S	M	T	W		F	S	S	M
20	21	22	23	24		26	27	28	29

**P** Drive & street parking

Instagram & Facebook @hampshireopenstudio





## 163 Jill Simpson

Watercolour, acrylics

I have been painting only a few years but enjoy painting in watercolour and using minerals and feathers to add effects

**12 Neville Close, Basingstoke, RG21 3HQ**

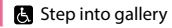
07778 220509 jillcorreale@aol.com

artgallery.co.uk/artist/jill-simpson

From the A30 turn into Cliddesden Road then first right into Neville Close

S S M T W T F S S M 11am-4pm

20 21 22 23 24 25 26 27 28 29



Drive & street parking

Full artist listings, mini-trail suggestions and maps to help guide you around are all available on our website  
[www.hampshireopenstudios.org.uk](http://www.hampshireopenstudios.org.uk)

Twitter @hantsopenstudio

Instagram & Facebook @hampshireopenstudio



## 164 Strawberry Fields Art Studio

Group, mixed

A group of artists exhibiting paintings in a variety of styles and subjects including landscape seascape wildlife and portraits.

**Unit 25 Viables Craft Centre, Harrow Way, Basingstoke, RG22 4BJ**

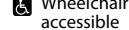
07708 005477 carol.gibbs@talktalk.net

www.strawberryfieldsartstudio.co.uk

Viables Craft Centre is off Harrow Way. Please see Map on our website.

S S T W F S S M Open 10am-5pm

20 21 22 23 24 25 26 27 28 29



Free car park on site



## 167 Bartley Heath Pottery

Ceramics

Lesley Dixon, Mick Dixon, & Gill Waller. Three Potters and a variety of styles; hand thrown domestic stoneware and sculptural ceramics. Tea and cake in the garden with donation to Charity.

**Bartley Heath Pottery, North Warnborough, Hook, RG29 1HD**

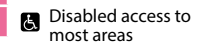
mick\_dixon@icloud.com www.bartleyheathpottery.com

Instagram & Facebook @bartleyheathpottery

Brown Pottery sign off A287 roundabout just south of M3 J5. Or put Bartley Heath Pottery into Google maps.

S S T W F S S M Open 10am-5pm

20 21 22 23 24 25 26 27 28 29



Free parking immediately outside



## 165 Julia Lane & Marianne Tilley

Painting

Julia - I am inspired by nature, particularly flowers and rural scenes and paint in acrylics and oils. Marianne - My art is fun to do, I enjoy playing with colour and shapes.

**1 Highlands Road, Basingstoke, RG22 5ES**

01256 475688 julia\_lane@live.co.uk

From Ringway, head for Leisure Centre B3400, continue straight over W Ham and Worting roundabouts. Take 2nd left (Old Kempshott Lane) bear left avoiding Wiltshire Crescent, 2nd left Highlands Road (2nd house on left)

S S M T W F S S M Open 11am-4pm

20 21 22 23 24 25 26 27 28 29



Drive or street parking



## 166 Consuelo & Phoebe Simpson

Jewellery, books, prints

Mother and daughter exhibition in sympathetic oak framed extension to thatched cottage. Contemporary jewellery cast in precious metals, small sculptures, prints, artists' books. Refreshments in garden.

**Porters Cottage, Down Street, Dummer, RG25 2AD**

07783 305077 hello@consuelosimpson.com

www.consuelosimpson.com www.phoebesimpson.com

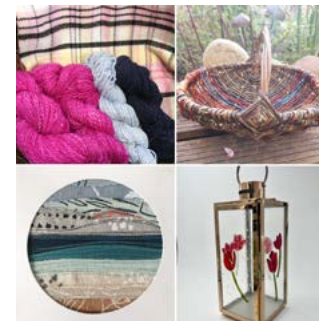
Two minutes from M3 junction 7, third cottage on the left in the village. Use RG25 2DL for satnavs.

S S M T W F S S M Open 10am-5pm

20 21 22 23 24 25 26 27 28 29



Street parking



## 168 The Craft Collective

Group, mixed, craft

A group of artists/crafters who represent some of the crafts practiced in Hampshire. The works on show include fused glass, spinning, dying, weaving, painting, fabric collage and willow work

**Unit 5, The Barn, Newlyn Farm Shop, North Warnborough, Hook, RG29 1HA**

07850 105430 crawfordjenny@aol.com

From M3 Junction 5, exit to A287 towards Odiham. At first roundabout take first exit then immediately right and follow access road to Newlyn Farm Shop. The Barn is on the left hand side of the Farm Shop building.

S S M T W T F S S M Open 10am-5pm

20 21 22 23 24 25 26 27 28 29



Farm Shop carpark



## 169 Maria Ellis - Inspired by Colour Studio

Painting, illustration

Acrylic paintings on canvas, acrylic and pen folios, tea towels from original artwork & greetings cards - all for sale at affordable prices.

**17 Reyntiens View, Odiham, RG29 1AF**

07887 745407 inspired.maria@gmail.com

www.inspiredbycolour.co.uk

From the A287 Farnham Road, 1st exit off roundabout into Odiham. Take 2nd left turning into Archery Fields. Next right, road curves left then take a right into Reyntiens View. At end of road middle house No. 17.

S	S	M				F	S	S	M
20	21	22				26	27	28	29

Open 10am-5pm

♿ Steps, narrow walkway

P Drive & street parking



## 172 Lisa Bartlett & Graham Mobbs Painting, ceramics

Atmospheric colourful oil paintings & evocative ceramics, indoor & outdoor sculpture & cards. Celebrating landscape, wildlife & the natural world in a beautiful countryside setting. Commissions welcome. Refreshments

**Ham Cottage, White Hill, Long Sutton, Hook, RG29 1TQ**

07703 324394 / 01256 862100 mobbsg@gmail.com

lisabartlett.art@icloud.com lisabartlett.co.uk

B3349 Alton road turn into Hayley Lane towards Long Sutton. Through village towards Well. Pass Four Horseshoes pub and Lord Wandsworth College. Third property on left White five bar gate.

S	S					F	S	S	M
20	21					26	27	28	29

Open 10am-5pm

♿ Gravel drive but wheelchair accessible

P Drive & lane parking



## 170 Odiham Art Group Group, mixed

Over 50 talented artists will offer their work for sale in this dynamic, high quality exhibition with all genres and media represented. Greetings cards and refreshments also available.

**Robert May's School, West Street, Odiham, RG29 1NA**

07585 559935 oagnews@gmail.com

www.odihamartgroup.org.uk Facebook: Odiham Art Group

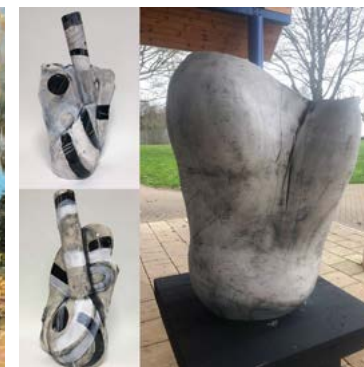
From M3 J5 use A278 south to A32 (signed North Warnborough/Alton). Bear left at next R/A. Turn onto West Street (by Texaco garage), venue on right after 400 yards.

S	S	M							
20	21	22							

Open 10-5pm

♿ Wheelchair accessible

P Free school car park



## 173 Ria Cornell Painting

An eclectic mix of colourful landscapes - some abstract. Ria's work depicts both real and imaginary places, often using textures and mixed media.

**14 Burnside, Fleet, GU51 3RE**

07752 354980

r.cornall@ntlworld.com

www.riacornall.co.uk Facebook @riacornallart

M3 J4a towards Fleet. Over railway bridge on Fleet Rd. Left into Kings Rd at traffic lights, 3rd right into Connaught Rd, 1st left into Burnside.

S	S		T	W	T	F	S	S	
20	21		23	24	25	26	27	28	

Open 10am-5pm

♿ 2 steps

P Ample street parking



## 171 Penny Fleet Painting, collage, textiles

Colourful and original mixed media paintings, collages, cards, prints, gifts and textiles inspired by the beauty of flowers, birds and nature, in a peaceful rural garage studio and gallery.

**The Stables, Park Corner Farm, Odiham, RG29 1JB**

07771 780874 pennyfleet3@gmail.com

www.pennyfleet.co.uk

The studio is 3 miles outside Odiham. From King Street, turn left past cricket club, right at farm building and follow country lane and pink signs for 2 miles. Google Maps advisable.

S	S					T	F		
20	21					25	26		

Open 10am-5pm or by appointment at other times

♿ Wheelchair accessible

P Plenty of parking outside studio



## 174 Karen Jones Glass, painting

Colourful, expressive and one-of-a-kind fused glass and stained glass gifts, cards and acrylic paintings spanning several themes, including wildlife, florals, contemporary abstract and Christian art. Commissions welcomed.

**15 Northfield Road, Church Crookham, Fleet, GU52 6EA**

07482 716767 kjones.getheden@btinternet.com

www.karenjjones.co.uk

From Fleet take the A323 (Reading Road South). Straight over first roundabout and left at the next roundabout (Aldershot Road). Northfield Road is 4th left turning. Follow pink signs.

S			T	W	T		S		M
20			23	24	25		27		29


Open 11am-4pm

♿ Uneven steps, no wheelchair access

P Street parking nearby




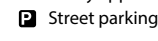
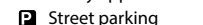
*From Basingstoke A339 to Alton. Turn RIGHT to Ellisfield. Stay on this winding lane for approx 1.5miles, through Ellisfield. Ignore Church Lane and Bell Lane & continue for 1/4mile. College Farm House is a white house on your right.*

 Wheelchair accessible



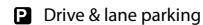
*Studio is situated behind the Fire Station. A short walk from Alton town centre.,  
Nearest public carpark is in Mountpleasant Rd. Less than 10 minutes walk.*

 No wheelchair access



01420 561034 susanbateslittle@gmail.com  
susanbateslittle.com

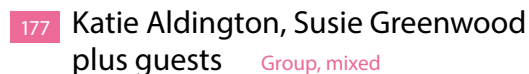
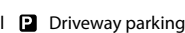
*Take the A339 from Alton to Basingstoke road for approx three miles. At the Lasham Bentworth crossroad turn up to Bentworth on the left. Proceed up Station Road & take first right into Drury Lane. Continue along that road for approx 1/4 mile. Stop when you see the HOS sign.*

 Wheelchair accessible

[www.elizabethshard.co.uk](http://www.elizabethshard.co.uk)

*From A31 at Four Marks turn into Boyneswood Road, continue as road bears left and becomes Red Hill, Windsor Road is on the left, Clevedon is 3rd house on right.*

 Grave  
Step



Katie Aldington, Susie Greenwood, Bridget Grande, Robert Grande, Phil Howard-Jones, Emma Seymour: Group of artist friends exhibiting work in an exciting variety of subject matters and differing styles. Including oils, acrylics, pastel animal portraits, ceramics and handwoven textiles.

susie\_Greenwood@yahoo.co.uk [www.susiedeboinville.co.uk](http://www.susiedeboinville.co.uk)

*Travelling North from Alton to Basingstoke on the A339. Turn left into BEECH and then immediately right into lane signed to WIVELROD and Theddon. Follow lane for 1.2 miles. Venue is on the left. Follow signs to parking and exhibition.*

 One step

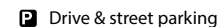


A limited edition of wearable Art jewellery, Framed signed Artwork, prints, handcrafted gifts all featuring artwork taken from my portfolio. I also take on commissions, creating unique pieces for you.

[www.houseofredgrave.co.uk](http://www.houseofredgrave.co.uk)

*The Shrove runs parallel with the A31, I'm towards the middle, bottom of it. Signage will be visible outside using the Hampshire Open Studio pink arrows and bunting.*



 Steps into house



Contemporary paintings, drawings, and prints created in response to our local environment, exploring landscape and history, and inviting focused attention on nature, climate and ecosystems.

[www.marvwaltham.com](http://www.marvwaltham.com)

*From Alton or Petersfield on the B3006, enter Selborne and turn into Gracious Street. Seale View is on the LEFT about 1/2 a mile along Gracious Street.*

 Level access, gravel  Street parking



## 182 Maggie Marten Painting, mixed media, cards

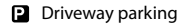
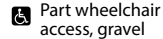
Oils, watercolours, charcoal, mixed media and cards

**Pump House, Newton Valence, Alton, GU34 3RB**  
01420 588336  
themartenfamily@btinternet.com

*Go to Newton Valence, reach pond on right and war memorial on left. 50yds on bear left down bridle path to Selborne common. Pump House is 4th house with low hedge and carport.*

S	S	M	T	W	T	F	S	S	M
20	21	22	23	24	25	26	27	28	29

Open 10am-5pm



## 186 Bruce Russell Painting

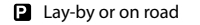
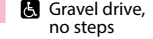
A hidden studio bursting with vibrant abstract paintings influenced by contemporary music and dance.

**The Laurels, Farnham Road, Liss, GU33 6JU**  
07923 483978 alisonmaryrussell@gmail.com  
Instagram @abstractartistbruce

*We are about half a mile from the A3 Ham Barn Roundabout on the B3006 towards Liss on the LHS just past the concrete bus shelter and opposite the entrance to Church St. Short walk up drive.*

S	S	M	T	W	T	F			
20	21	22	23	24	25	26			

Open 10am-5pm



## 183 Jenny Hill-Norton Painting

Finished works and works in progress, studio is part of a medieval barn. Vibrant, exciting and entertaining. Affordable.

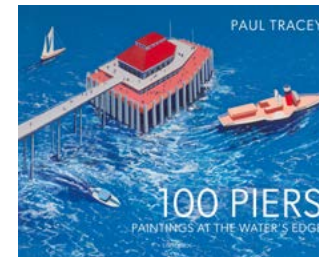
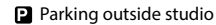
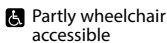
**The Barns, Newton Valence, Alton, GU34 3RB**  
01420 588302 07967 007604

jennyhillnorton@gmail.com www.justfour.co.uk

*From A32 travel up Newton Lane for 1 1/2 miles. With the pond on your right, and after war memorial on your left, turn left up the bridleway to Selborne Common. The Barns are 200 yards on the left, studio in second barn.*

S	S	M				F	S	S	
20	21	22				26	27	28	

Open 11am-5pm



## 187 Paul Tracey Paintings, prints

Painted over five years, a collection of paintings and prints of UK, European and American piers. Published in April 2021 as 100 Piers, Painting at the Water's Edge.

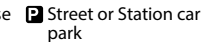
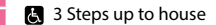
**Signal View, 61 Station Rd, Liss, GU33 7AA**

07724 882403 paul@paulthecad.com  
www.paintingsofpiers.com

*Opposite to Liss train station.*

S	S	M	T	W	T	F	S	S	M
20	21	22	23	24	25	26	27	28	29

Open 10am-5pm



## 184 Tim Mullins Painting

Contemporary expressionist landscapes. An extensive range of new, inspirational original works in acrylic and mixed media.

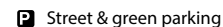
**1 Lower Green Cottages, Hawkley, GU33 6NW**  
01730 827475

timandpat@btinternet.com Instagram @timmullins949

*Take the West Liss turning off the A3. At the Spread Eagle pub take the Hawkley Road for 2 miles. The studio is on the left at Lower Green.*

S	S					T	F	S	S	M
20	21					25	26	27	28	29

Open 10.30am-5pm



## 185 Jonathan Thompson Printmaking

'The Solent Way' - A Printmakers Progress. Multi-plate sugar lift aquatint etchings that depict stages of a journey and pilgrimage from Emsworth to Milford on Sea in Hampshire.

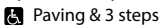
**Meadow Press, 4 Woodfield Cottages, Honeycritch Lane, Froxfield, GU32 1BE**

07543 894868 meadowpress@gmail.com  
www.jonathan-thompson.com

*From Petersfield drive up Bell Hill and turn right into Honeycritch lane just before the Trooper Inn. From Alton turn left just after the Trooper Inn.*

S	S							S	S	
20	21							27	28	

Open 10am-5pm



## 188 Abigail J Marsh & Joanna Spragg Jewellery, painting

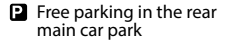
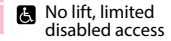
Abigail J Marsh is a designer, maker and silversmith creating unique, one-off jewellery & small silversmithing pieces. Joanna Spragg is a landscape and abstract artist with a passion for painting local beauty spots and a great eye for colour.

**Signal, Martinique House, Bordon, GU35 0HJ**  
01420 556335 work@signalbordon.org www.escape2art.co.uk  
www.signalbordon.org www.abigailjmarsh.co.uk

*Turn onto Kildare Road, at the end of the road turn right & drive for around a 100 Yards & turn right again into the main car park which is at the rear of the building.*

S	S	M	T	W	T	F			
20	21	22	23	24	25	26			

Open 11am-4pm





### 189 Alison Orchard Painting, mixed media

Inspired by nature, my inspirational working studio is filled with gutsy coastal and landscape paintings, modern abstracts, drawings, prints, cards and ceramics. Great location with restaurant. Not to be missed!

**Applegarth Farm, Headley Road, Grayshott, GU26 6JL**  
07880 530201 [info@alisonorchard.com](mailto:info@alisonorchard.com)  
[www.alisonorchard.com](http://www.alisonorchard.com)

*From A3 Hindhead Tunnel, follow signs to Grayshott, Applegarth Farm is on Headley Road, 1 1/2 miles past village and church, on right, next to Applegarth Vale and opposite Grayshott Spa.*

S	S	M				T	F	S	
20	21	22				25	26	27	

 10am-4pm or by appointment

Small step, limited space Large car park space



### 191 The Barn Emporium Artisans Group, mixed

We are a group of artists and makers, including silver jewellers, glass artists, painters, a photographer, a print maker and ceramic artists. All our work is handmade and original.

**The Courtyard, Durleighmarsh Farm, Petersfield, GU31 5AX**  
01730 818238 / 07518048975 [www.barnemporium.co.uk](http://www.barnemporium.co.uk)  
[thebarnemporium@outlook.com](mailto:thebarnemporium@outlook.com)

*The Barn Emporium is situated around one hundred yards north of the A272, roughly 1.5 miles from Petersfield. The Barn is clearly sign posted on the A272 travelling from either Petersfield or Midhurst.*

S	S	M	T	W	T	F	S	S	M
20	21	22	23	24	25	26	27	28	29

 Open 10am-5pm (except Sundays & BH until 4pm)

Lower floor access on request Free car parking



### 190 Laurence Morgan Drawing, mixed media, recycled art

I invite you to visit my home studio and explore my portraiture and figurative works. Ink, mixed media, charcoal and paint over a mix of paper, recycled objects and canvas.

**5 Sunnyside Bungalows, Sickles Lane, Bordon, GU35 9PH**  
07840 904325 [laurencemorganart@hotmail.com](mailto:laurencemorganart@hotmail.com)  
[www.laurencemorganart.bigcartel.com/](http://www.laurencemorganart.bigcartel.com/)

*Kingsley is between Bordon and Alton so the car is an option but the 23 bus route stops in the village too.*

S	S	M	T	W	T	F	S	S	M
20	21	22	23	24	25	26	27	28	29

 Open 10am-5pm

Ramp - wheelchair accessible Street parking/Car park near



### 192 Courtyard Gallery Oils, mixed media, acrylics

Three Hampshire artists, Sue Rawlings, Barbara Whitbourn and Maria Yadegar painting the landscape in a wide variety of styles from plein air oils, abstraction in mixed media and loose acrylics.

**The Courtyard, Durleighmarsh Farm, Petersfield, GU31 5AX**  
07957 873347 [info@courtyardgallery.uk](mailto:info@courtyardgallery.uk)  
[www.courtyardgallery.uk](http://www.courtyardgallery.uk) Instagram @the\_courtyardgallery

*Courtyard Gallery is located in the Courtyard at Durleighmarsh Farm on the A272 between Petersfield and Rogate.*

S	S			W	T	F	S	S	
20	21			24	25	26	27	28	

 Open 10am-5pm

Gravel courtyard, One Small Step On site parking



Full artist listings, mini-trail suggestions and maps to help guide you around are all available on our website  
[www.hampshireopenstudios.org.uk](http://www.hampshireopenstudios.org.uk)

Twitter @hantsopenstudio  
Instagram & Facebook @hampshireopenstudio



Venue 185 J Thompson



**Festival Hall, Heath Rd, Petersfield , GU31 4EA**  
[website@petersfieldartsandcrafts.org.uk](mailto:website@petersfieldartsandcrafts.org.uk)  
[petersfieldartsandcrafts.org.uk](http://petersfieldartsandcrafts.org.uk)


W T F S M Open 10am-4pm  
24 25 26 27 28 29  Most areas are fully accessible **P** Pay and display car park



**The Physic Garden, 16 High Street, Petersfield, GU32 3JJ**  
susan.colyer@btinternet.com  
www.suecolyer.com

						F	S	S	M
						26	27	28	29

Open 10am-4pm

 Wheelchair accessible

**P** Parking in Town Centre car parks



**12 Heath Road, Petersfield, GU31 4DU**

01730 266833 / 07771 544836

georgespear1@me.com    [www.georgespear.co.uk](http://www.georgespear.co.uk)

S S T W T F S S M  
 20 21 23 24 25 26 27 28 29

Open 10am-5pm  
 ♿ No wheelchair access. Uneven path

P Next to Festival Hall car park



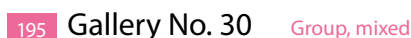
Theresa Christie (graphic designs), Roy Duke (fused glass), Sammy Irving (personalised prints), Margaret Newbiggin (linocuts & paintings), Phil Russell (sketchbooks, notebooks & journals), Helen Sill (illustration & textile art).

**69 Rushes Road, Petersfield, GU32 3BP**

01730 263174

rkdjn69@gmail.com Instagram @rushesroadcreatives  
www.rushesroadcreatives.uk

Leave A3 at Winchester A272 / Alton A32 /Services exit. Head towards Town Centre (Winchester Road) Rushes Road is 2nd Right. Short walk from Petersfield Railway Station



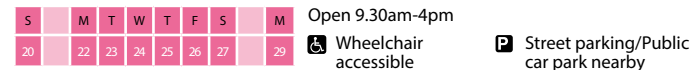
Stunning, original & affordable Paintings, Lino & Digital prints & glasswork by Andrew Tubbs, Jill & Paul Martin & Alison Udall. Displayed in an Art Deco Gallery & Cafe serving food & drinks in the centre of Petersfield.

**30 High St, Petersfield, GU32 3JL**

01730 858856      galleryn30.co.uk

Instagram @galleryno30    Facebook @galleryn30

*On main Petersfield High Street, Opposite the War memorial and Marks & Spencers*



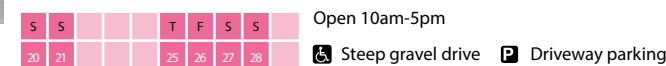
Contemporary expressive works, including drawings, collage, oils and mixed media. All works begin with drawings. Subject matter ranging from landscapes, animals, still-life and abstract.

**Farriers, High Street, East Meon, GU32 1QD**

07956 617986      janemartin792@gmail.com

www.janemartin.co.uk Instagram @janemartin artist

Enter East Meon from Petersfield direction. Pass Ye Olde George Pub on right. Take left bend up High Street (with river on left). Pass the Izaak Pub on left - Farriers is on right.





### 199 Caroline Hawkey Painting, pastel

Farm animals and domestic pets in pastel or watercolour, plus originals and prints of houses and cottages in the pretty village of East Meon. Cards for sale.

**Malthouse Cottage, Workhouse Lane, East Meon, GU32 1PF**

cathawkey@live.co.uk

*When in East Meon head for Workhouse Lane and park at the village hall. Malthouse Cottage is almost directly opposite the car park. Studio and summerhouse at rear.*

S	S	M				F	S	S	M	Open 11am-4pm	
20	21	22				26	27	28	29	Gravel driveway	Village hall car park



### 200 Sunny Outside Painting

Fresh, exciting and honest portrayals of the local landscape. Inspired by the sea, sun and the seasons. Acrylic on canvas.

**The Cabin, 23 The Green, East Meon, GU32 1QT**

07751 750942 enquiries@sunnyoutside.co.uk

www.sunnyoutside.co.uk

*When in East Meon, follow signs for the Village Hall, Workhouse Lane. Park here and follow pink arrows for the Cabin. House nearest to the park.*

S	S					T	F	S	S	Open 10am-5pm	
20	21					25	26	27	28	Wheelchair access grass/gravel	Village Hall Car Park



### 201 Wessex Sculptors Sculpture

An extensive & varied mix of traditional & contemporary sculptures for both indoor & outdoor display using a wide variety of methods & materials from a group of sculptors of all levels of experience. Refreshments available.

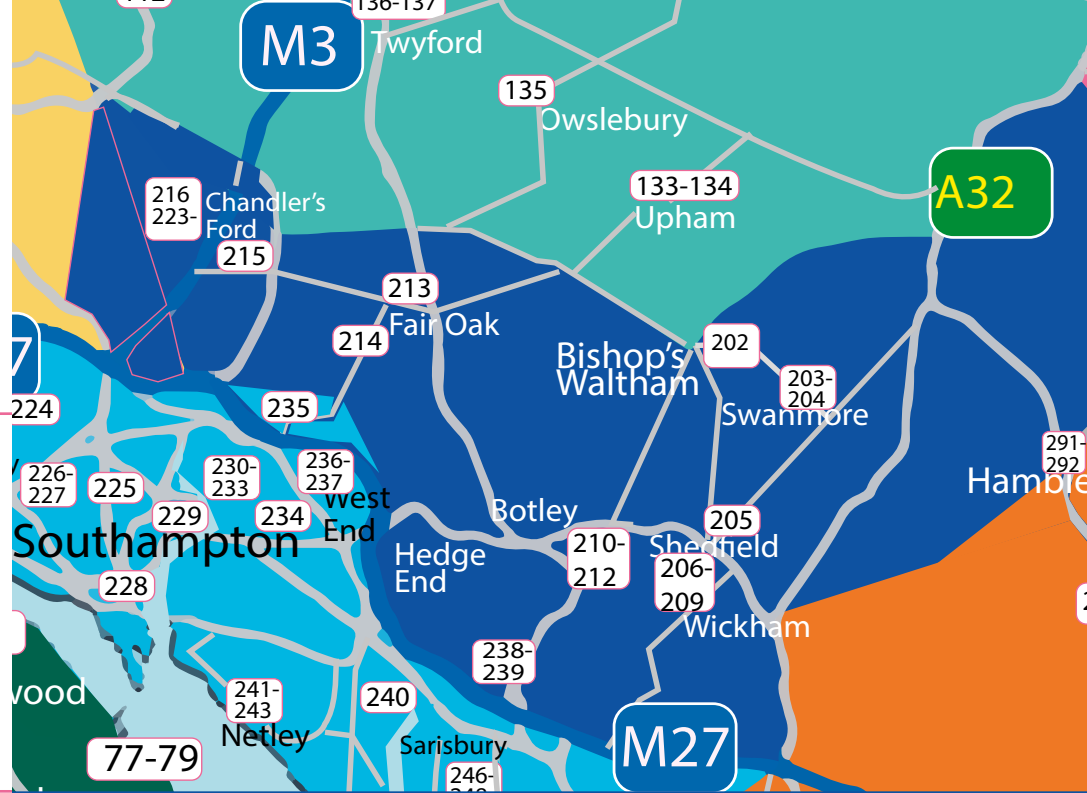
**Unit C1A, The Black Shed, Brockwood Barn, Bramdean, SO24 0LQ**

wessexsculptors@gmail.com

www.wessexsculptors.co.uk

*Two miles East of Bramdean, turn South of the A272, signed to Brockwood. After approx. 1/2 mile, the venue is on the left after a 90 degree left hand bend.*

S	S					T		S	S	M	Open 11am-5pm; except Thurs. 25th 4pm-7pm	
20	21					25		27	28	29	Level access but stoney car park	Parking at rear of barn (signed)



### 202 The Beeches Garden Gallery Sculpture, glass, jewellery

Artisans skilled in a range of materials; ceramics, silver, textiles and painting. Thoughtful, original and affordable pieces for sale by Jane Ogden-Swift, Lois Mahoney, Belinda Cave and Krista Thomson

**The Beeches, Rareridge Lane, Bishops Waltham, SO321DX**

07875 967558 thebeechesgardengallery@gmail.com

Instagram @thebeechesgardengallery

*Follow Sat Nav up Oak Rd. At the top don't turn left. Instead follow the road round to the right, drive until the 3rd house on the left before the end. Or, enter Rareridge Lane from Hoe Rd, 3rd on right.*

S	S					T	F	S	S	M	Open 10am-5pm	
20	21					25	26	27	28	29	Small slope, gravel path, steps	Street parking

### 203 Wessex Guild of Craftsmen Group, craft

A varied selection of handmade Art and Craft from 7 members: woodturning, willow basketmaking, studio pottery, textile art, stained glass homewares, original abstract paintings and fine art prints

**The Paterson Centre, Church Road, Swanmore, SO32 2PA**

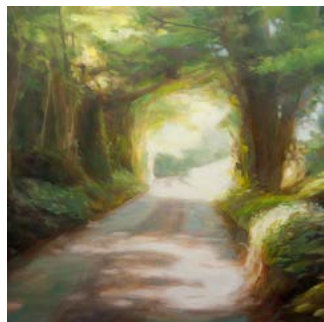
07549 522107 lb.brown@icloud.com

www.wessexguildofcraftsmen.co.uk

*The Patterson Centre is adjacent to St Barnabus Parish Church in the middle of the village of Swanmore, on Church Road.*

						F	S	S	M	Open 10am-5pm	
						26	27	28	29	Wheelchair accessible	Parking outside centre or opposite





## 204 Jerry Smith Painting

Paintings, studies & sketches of the Meon Valley & further afield. Original works in oil, acrylic, charcoal & pencil. Prints & greetings cards also available.

**3 Fortunes, Vicarage Lane, Swanmore, SO32 2PW**

01489 890992 07866 414804

info@jerrysmithartist.co.uk www.jerrysmithartist.co.uk

From Swanmore village centre head east along Church Road and take first left.

Then it's 250 metres up Vicarage Lane on the left. Please follow the signs. (Please make sure to enter correct post code if using older sat nav model)

S	S	M	T	W	T	F	S	S	M
20	21	22	23	24	25	26	27	28	29

 Open 10am-5pm or by appointment

Single step

Street & some driveway parking



## 208 Shelagh Williams Painting

My work is eclectic inspired by my love of Scotland, Antigua & my love of life !

**Gardeners Cottage, Titchfield Lane, Wickham, PO17 5PB**

01329 832224 07899 921425

sunshineshelagh@yahoo.co.uk shelaghwiliams.co.uk

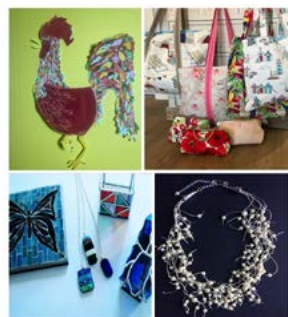
Titchfield Lane, immediately North of Park Place Nursery (garden centre)

				W	T	F	S	S	
				24	25	26	27	28	

 Open 2pm-5pm 24th & 12-6pm 25th- 28th

Flat lawn. Small step

Driveway & garden



## 205 Mariner's Studio & Friends Textiles, mixed media

Jane Warwick- Textile & batik landscapes; Sharon Candy - Textile bags; Inga Chapman - Jewellery & Shibori Silk Scarves; Lesley Nguyen - fused and stained glass. All inspired by light and nature

**Mariners Cottage, Turkey Island, Shedfield, SO32 2JE**

marinersstudio@outlook.com instagram @mariners\_studio

From Botley (A334), turn left onto B2177. Then right onto Heathlands. At crossroads, turn right onto Pricketts Hill. Take 2nd single gravel track on right and follow pink arrows.

S	S	M	T	W	T	F	S	S	M
20	21	22	23	24	25	26	27	28	29

 Open 11am-4pm

Step & gravel driveway Driveway or street on Pricketts Hill



## 206 Mountwood Pottery & friends Ceramics, mixed media

Stoneware pottery: domestic tableware, fountains, wall plaques, plant pots (bonsai, orchids, tillandsias, succulents) various other crafts and art (jewellery, wool, willow, wood and paintings).

**Mountwood House, Biddenfield Lane, Shedfield, SO32 2HP**

01329 833355 07587 144845

evelinechamberlain@gmail.com

facebook @mountwoodpottery

From Wickham take the Winchester Rd (B2177), turn left on the A334 ( Botley), straightaway left into Biddenfield Lane. Mountwood Hse is 0.9 mile on left

S	S	M	T	W	T	F	S	S	M
20	21	22	23	24	25	26	27	28	29

 10am-5pm

4 steps, no wheelchair access Driveway or neighbouring field



## 209 Brian Eyley & Friends Wood, jewellery, sculpture, painting

Contemporary artists working in different media.

Brian Eyley: Artistic woodturning based on natural forms plus photography.

Lyn Eales (Pumblechook'sbeads&Jewellery): Jewellery, silver & gems.

Jacqueline Rolls (WillowandCrafts): Willow sculpture & rush basketry.

David Small: Scroll saw decorative creations.

Lisa Beavis (Lisabeavisarts): Acrylic & mixed media painting.

**28 Manor Close, Wickham, PO17 5BZ**

07547 241974 artistryinwood@gmx.com

www.briansartistryinwood.square.site (more details on all 5 artists on this link)

Manor Close is between The Square and the Shell garage. Ring No 28 side gate bell and enter rear garden conservatory. Teas and cake available.

S	S	M	T	W	T	F	S	S	M
20	21	22	23	24	25	26	27	28	29

 Open 10am-5pm

Level access. Ramp on request

Street parking at side



## 207 Wild Art Gallery Painting, gallery

Gallery and Studio exhibiting work from over 25 local artists and artisans, all with a nature theme. Beautiful paintings, prints, cards, glassware, jewellery, pottery and more.

**Warwick Lane, 3-4 The Square, Wickham, PO17 5JN**

wildartwickham@gmail.com www.wildartgallery.co.uk

Facebook & Instagram @wildartgallery

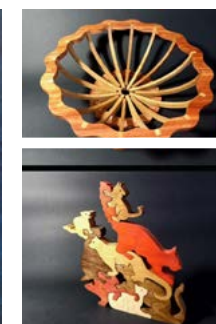
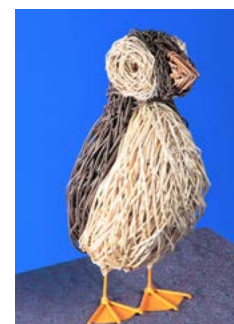
Inside Warwick Lane shopping arcade on the Wickham Square, next to the pharmacy.

S	S	M	T	W	T	F	S	S	M
20	21	22	23	24	25	26	27	28	29

 Open 10am-4pm

Wheelchair accessible

Parking in the square car park





## 210 Dé Garis Designs Painting, interiors

Dé Garis Designs: Unique one off colourful abstract paintings inspired by landscapes and seascapes from around Hampshire and Isles of Scilly's. Mainly using canvas and acrylics, large and small scale paintings.

**The Lawns, Lockhams Road, Curdridge, SO32 2BD**

01489 797550 07949 690 609

info@kimberleygarrod.co.uk www.degarisdesigns.co.uk

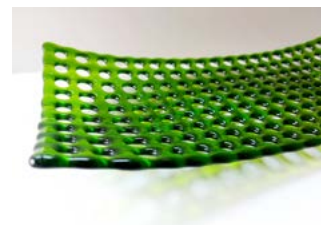
A334 from Botley to Wickham, turn left top hill onto Lockhams Road follow the pink arrow signs and pink balloons which will be on your left to locate the studio.

S	S	M	T	W	T	F		M
20	21	22	23	24	25	26		29

Open 9am-5pm (except 20th until 7pm)  
Appointments also available for out hours

🚶 Gravel, 1 step

🅑 Driveway & street



## 213 Studiozo (Fused Glass) Glass

Fused glass items including: pictures, wavy panels, bowls, coasters, tealight holders, lanterns, wall and garden art, plus some sterling silver jewellery.

**393 Fair Oak Road, Fair Oak, SO50 7AB**

zoe@studiozo.co.uk www.studiozo.co.uk

instagram.com/studiozo.uk facebook.com/StudioZoUK

On the main Fair Oak Road (B3037) near the junction with Allington Lane.

			T	W	T	F	S	S
			23	24	25	26	27	28

Open 10am-4pm

🚶 Gravel. One step

🅑 Driveway, or layby



## 214 Allington Artists Group, mixed

Artists formed as a China painting group but also work in other medias using oils, pastel, acrylics, water colour, textiles. Varied and versatile subjects.

**The Studio, Allington Manor, Allington Lane, Fair Oak, SO50 7DE**  
02380 692621 ludwig.lowenstein@btinternet.com

From A27 find Allington Lane. Follow lane over railway bridge, 2nd turning on left Allington Manor. From Eastleigh/Fair Oak road follow Allington Lane 1 mile on right hand side, stones on grass, Allington Manor. The Studio will be marked.

S	S	M	T	W	T	F	S	S	M
20	21	22	23	24	25	26	27	28	29

Open 10am-4pm

🚶 Gravel & steps

🅑 Gravel parking area



## 211 Force 8 Mixed media, textiles

A selection of unique work encompassing varied technique by Sue Bell, Vanessa Bettinson, Margaret Bingham, Jo Foulkes, Terri Hitchcock, Janet Humber, Lois Mahoney, Jane Tanner.

**Reading Rooms, Reading Room Lane, Curdridge, SO32 2HE**  
www.facebook.com/Force8textiles

A334 from Wickham to Botley turn right at crossroads into Reading Room Lane,  
On B3035 from Bishops Waltham to Botley turn left into Reading Room Lane

S	S								
20	21								

Sat 20th 11am-4pm; Sun 21st 10am-4pm

🚶 Wheelchair accessible

🅑 Ample parking



## 215 Linda Miller & Friends Group, mixed

Linda Miller, Linda Chew, Rachel Platt, Jill Maguire: Four professional artists working in different disciplines producing a broad range of work. Framed original prints, lino cuts, machine embroideries, pots, vessels, limited landscape photography prints, ceramic jewellery, pieced & stitched homewares.

**108 Archers Road, Eastleigh, SO50 9BG**

07816 270177 linda@lindamillerembroideries.co.uk

www.lindamillerembroideries.co.uk

Located at the railway end of Archers Road, Some 2-hour free parking bays in surrounding roads, also two pay and display carparks nearby.

S	S						S	S	M
20	21						27	28	29

Open 10am-5pm

🚶 2 steps, no wheelchair access

🅑 Street & nearby car parks



## 212 Wood, Clay, Stone, Silk Pottery, prints, textiles, sculpture

Vasu Reddy: pottery, prints, paintings, handwoven textiles, sculpture: ceramics; Anne Hayward: Original wood engravings & paintings; Ann Richards: Pleated scarves & textile jewellery; Richard Hayward: Stone & wood carvings.

**Tanglewood, Outlands Lane, Curdridge, SO30 2HD**

01489 784681 07906 850724

vasureddyceramics@gmail.com www.potsandbellies.co.uk

Outlands Lane is off the A334, at crossroads with Reading Room Lane (not accessible from A3057). Keep going on Outlands Lane past railway bridge, then first house on left

S	S	M	T			F	S	S	M
20	21	22	23			26	27	28	29

Open 10am-5pm

🚶 Gravel, no steps. Wheelchair access

🅑 Street parking

Full artist listings, mini-trail suggestions and maps to help guide you around are all available on our website  
**www.hampshireopenstudios.org.uk**

Twitter @hantsopenstudio

Instagram & Facebook @hampshireopenstudio

## 216 Chandlers Ford Art Group Group, mixed, painting

This once-a-year opportunity invites visitors to meet our talented members working in a studio setting. Artists will be showcasing inspirational paintings, innovative creative work, framed originals, and cards. Dovetail Café open Tuesdays to Saturdays 9.30am-12.30pm

**The Dovetail Centre - Large Hall, The Methodist Church, Winchester Road, Chandlers Ford, SO53 2GJ**

07720 075098 [cfagspevents@gmail.com](mailto:cfagspevents@gmail.com)

[www.chandlersfordartgroup.com](http://www.chandlersfordartgroup.com)

*The entrance to the HOS Studio Hall is adjacent to the Dovetail Café at the front of the Methodist Church on the Winchester Road in central Chandlers Ford. (M3J12)*

S	S	M	T	W	T	F	S	S
20	21	22	23	24	25	26	27	28

Open 10am-4pm

Wheelchair accessible

Ample free car parking at rear



## 217 Sophie & Sue Ceramics, printmaking

A beautiful selection of ceramics and original lino prints, each taking inspiration from nature and the earth. Ceramics include thrown and handbuilt forms, decorative and functional in stoneware and porcelain.

**1 Collingbourne Drive, Chandlers Ford, SO53 4SW**

[Sue.robbs@gmail.com](mailto:Sue.robbs@gmail.com)

[www.instagram.com/suzannahrobbs/](https://www.instagram.com/suzannahrobbs/)

*Use postcode to find location. Follow pink arrows*

S	S	M	T	T	F	S	S	M
20	21	22	23	25	26	27	28	29

Open 10am-5pm

One step to garden studio

Street parking

## 218 Steph Edwards Ceramics, textiles

Fun and quirky ceramics for the home and garden, and colourful rag rugs.

**Ashleigh, Station Lane, Chandlers Ford, SO53 4DD**

[stephje1102@hotmail.co.uk](mailto:stephje1102@hotmail.co.uk)

[www.facebook.com/poundsgatepottery.co](https://www.facebook.com/poundsgatepottery.co)

*Follow signs to Chandlers Ford Train Station. Venue is the blue bungalow on right hand side near the top.*

S	S	M	T	W	T	F	S	S	M
20	21	22	23	24	25	26	27	28	29

Open 11.30am-6pm

Small step

Free parking at Railway Station



## 219 Hilary A Archer Paintings, sculpture

Everyone welcome, a house full of paintings, sculptures in wood or stone.

**3 Regent Road, Chandlers Ford, SO53 2GT**

02380 692893

07752 386271

[hilaryaarcher@gmail.com](mailto:hilaryaarcher@gmail.com) [www.hilaryarcherart.co.uk](http://www.hilaryarcherart.co.uk)

*Turn into Bodycoats Road. 2nd turning on the right into Regent Road. I am just around the corner number 3.*

S	S	M	T	W	T	F	S	S	M
20	21	22	23	24	25	26	27	28	29

Open 10am-4.30pm

Steps with rail

Drive or street parking









### 231 Rebecca Oxenham Jewellery Jewellery, painting

Rebecca Oxenham works from her garden studio handmaking nature inspired jewellery using recycled silver, silver clay and 24 carat gold plating. She also runs regular beginners' workshops. Gift vouchers also available.

**78 Oaktree Road, Southampton, SO18 1PH**

07795 567531 rebecca@rebeccaoksenham.com

www.rebeccaoksenham.com

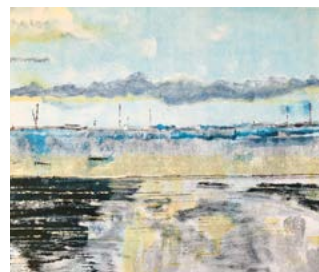
Located close to Riverside Park - half way down Oaktree Road. Studio access is at the side of house at end of the garden. Parking on Oaktree Road or car park nearby on Manor Farm Road (near the junction to Dimond Road).

S	S	M	T	W	T	F	S	S	M
20	21	22	23	24	25	26	27	28	29

Open 10am-5pm

Steps and grass to studio

Street or car park nearby



### 235 Lin Knott Painting

Paintings and monoprints. Atmospheric landscapes and seascapes. Lots of new work.

**1, Nutmoor Cottage, Allington Lane, West End, SO30 3HQ**

07778 559415 nutmoorknotties@yahoo.co.uk

www.linknott.co.uk

M27 take J7 onto A334west. Next roundabout take 4th exit onto A27, next roundabout take 3rd exit into Allington Lane, we are one mile along on the right.

				W	T	F	S		
				24	25	26	27		

Open 10.30am-5pm

No wheelchair access, narrow entrance

Street parking



### 232 Sandrine Maugy Watercolour, textiles

Botanical art, cards and textiles. A chance to see the paintings of my new book "Botanical Watercolours through the Seasons" exhibited together for the first and probably only time.

**77 Manor Farm Road, Bitterne Park, SO18 1NR**

OSAtelierSandrineMaugy@gmail.com

www.sandrinemaugy.com Instagram @sandrinemaugy

Opposite the Bitterne Park Social Club

S	S	M							
20	21	22							

Open 10am-5pm 20th -21st & 2pm - 6pm 22nd  
Other times by appointment

One step to front door

Behind Social Club



### 236 Jill Waldron Painting, glass, jewellery

Inspired by the beauty of nature a variety of mixed media paintings and fused glass pictures, bowls, gifts, jewellery all created in a colourful, vibrant style. Also ceramics and cards.

**14 Elm Gardens, West End, Southampton, SO30 3SA**

02380 466474 / 07967 628185

jillmwaldron@gmail.com

From A27 take B3035 to West End High Street. Take immediate left to Barbe Baker Avenue. 5th turn on right. Venue 1st house on right, studio in garden via side gate

S	S	M		W	T	F	S	S	M
21	22	23		25	26	27	28	29	30

Open 10am-5pm

Lawn, path, two steps

Street parking



### 233 Alexa Kowalski & Sue Taylor Glass, paintings

Original, handmade fused glass gifts. 'Have a Go' workshops for visitors 26,27,28,29 August £10. Sue Taylor produces beautiful paintings and drawings. Card payments accepted

**112 St Catherines Rd, Bitterne Park, Southampton, SO18 1LU**

023 8032 3668 07730 420638

alexakowalski74@gmail.com www.facebook.com/alexasglass

Corner house on Nursery Road, at its junction with Oaktree and St Catherines Road. Opposite the number 7 bus stop from town.

S	S					F	S	S	M
20	21					26	27	28	29

Open 10am-4.30pm

Wheelchair accessible on request

Street or nearby car park



### 237 Aylsa Williams & Mandy Smith Paintings, printmaking

Aylsa Williams & Mandy Smith: Paintings and bright, bold handmade prints and gifts, inspired by nature, the landscape, changing seasons and architecture. Visit a working studio, takeaway a free gift!

**2, Long Drive, West End, Southampton, SO30 3HX**

aylsaw@gmail.com www.aylsawilliams.co.uk/

www.mandysmithartist.com

Travelling down Moorgreen Road from West End High Street, Long Drive is the 4th turning on the left. Travel to the bottom of Long Drive.

S	S	M				F	S	S	M
20	21	22				26	27	28	29

Open 11am-6pm

Wheelchair access to garden, 2 steps

Free drive parking



### 234 Kay Le Poidevin Painting, drawing, cards

Paintings and cards, oils, acrylics and watercolours. Sea and landscapes and animals.

**19 Balaclava Road, Bitterne, Southampton, SO18 6NS**

07849 822748 kaylepoidevin@aol.com

Bitterne Village. From main road turn into Commercial at Eastern Library. Balaclava Road is the T junction at the top of the road.

S	S	M	T						
20	21	22	23						

Open 10am-5pm

Level access

Street parking



### 238 Nick Carter Painting

A wide variety of acrylic paintings, subjects include everything from still life to seascapes.

**65 Burridge Road, Burridge, Southampton, SO31 1BY**

nickcarter65@icloud.com

Leave M27 at junction 9. Proceed to Park Gate then take Botley road until reaching Burridge Road on the left. Exhibition is 1/4 mile on the left.

S	S	M	T	W	T	F	S	S	M
20	21	22	23	24	25	26	27	28	29

Open 10am-5pm

Gravel drive/ no wheelchair access

Driveway/street parking



## 239 The Barn at Friends Farm

Painting

A renovated 16th century barn and art cafe displaying the mixed media paintings of award winning artist Sue Rubira MA RCA. Handmade soap and other crafts also available.

15 Swanwick Lane, Swanwick, Southampton, SO31 7DX

thebarnatfriendsfarm@gmail.com

instagram @friends\_farm\_swanwick

You can find us next door to the Elm Tree Inn at the top of Swanwick Lane.

S	S	M	T	W	T	F	S	S	M
20	21	22	23	24	25	26	27	28	29

Open 10am-5pm

♿ Gravel path/wheelchair accessible

P Private car park & disabled parking



## 240 Greyladies Arts Foundation (GAF)

Group, mixed

A group of local artists exhibiting various media in the Grade II listed Greyladies Chapel, Colin Bowler painting, Kirstin White watercolours, Steve Foulkes photography, Frankie Colling painting, Graeme Hodgson ceramics, Bethan Foulkes lino prints, Robert Truscott sculpture.

The GAF Centre, School Road, Old Bursledon, Southampton, SO31 8BX

02380 40 3234 07752 017470

info@gaf.org.uk www.gaf.org.uk

From the A27 at the River Hamble & railway bridge turn up Church Lane leading straight into School Rd. After travelling half a mile GAF's bell tower is on the left. tower is on the left.

S	S	M	T	W	T	F	S	S	M
20	21	22	23	24	25	26	27	28	29

Open 1-5pm

♿ Wheelchair lift available

P Public car parks within easy walking distance



## 242 Ron & Trish Moody

Painting, mixed media, textiles

Ron: A large selection of new watercolour and acrylic paintings in his quirky colourful style plus unframed originals, prints and cards.  
Trish: Lots of handmade bags and textiles.

40 Grange Road, Netley Abbey, Southampton, SO31 5FE

02380 453788 07842 166204

ronaldmoody@tiscali.co.uk www.moodyarts.co.uk

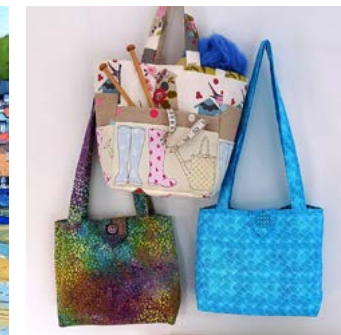
From M27 - J8 take B3397 to Hamble. After ½ mile turn right (signed Woolston). After ½ mile turn left (signed Netley Abbey). Venue is 1 mile on LHS (green fence)

S	S	M	T	W	T	F	S	S	M
20	21	22	23	24	25	26	27	28	29

Open 11am-5pm

♿ Wheelchair accessible

P Street parking & driveway



## 243 Seaview Artisans

Group, mixed

A diverse group of artisans exhibiting throughout the house, garden & stained glass studio. Contemporary glass art @seaview\_studio, handmade ceramics @SLKceramics, photography @rob\_dove\_photography, silver jewellery @my925designs & scrap metal sculpture @ns\_sculpture. Treat yourself to tea & cake while perusing a varied selection of hand crafted items.

56 Seaview Estate, Netley Abbey, Southampton, SO31 5BQ

jo@seaview-studio.co.uk

www.seaview-studio.co.uk/seaviewartisans

From M27 J8, take B3397 towards Hamble. Right at roundabout (Hound Way) continue 1/2 mile passing Coop on left. Take immediate left (New Rd), next left (Sea View Est). Venue is at top of Road.

S	S	M	T	W					
20	21	22	23	24					

10.30am-5pm plus late opening Mon 22nd till 7:30pm

♿ Grass & steps

P Street/car park nearby



## 241 CStar Design

Glass

Handmade fused glass art and functional ware showing our latest kiln formed pieces. Workshops available, book via our website to create your own fused glass creation. (spaces limited, booking essential.)

9 Waverley Avenue, Netley Abbey, SO31 5AR

07814 127028

info@cstardesign.co.uk www.cstardesign.co.uk

J8 of M27 take the B3397, right at the 3rd roundabout into Netley. Over the rail way bridge first left, then right into Waverley Ave. Follow pink bunting to the Studio.

			W	T	F	S	S	M
			24	25	26	27	28	29

Open 10am-4pm


♿ 2 steps to studio

P Street parking





**Dolphins 10 Passage Lane, Warsash SO31 9FW**

S S T W T F S S M Open 10am-4pm  
20 21 23 24 25 26 27 28 29  1 small step

## 248 Smartiststudio

S S M T T F S S M Open 10am-5pm  
20 21 22 23 25 26 27 28 29 Step at front door

245 Warsash Art Group

					T	F	S	S	
					25	26	27	28	

## 249 KJHammond Art

S	S	M	T	W	T	F	S	S	M
20	21	22	23	24	25	26	27	28	29

Open 10.30 - 4.30pm

 Steps, slopes and stairs


## 246 Gillian Seaman &amp; Brian Gray

S S M T W T F S S M Open 10am-5pm  
20 21 22 23 24 25 26 27 28 29  One step

250 Great Abshot Barn Mixed, group of 12

S		M	T	W	T	F	S		M
20		22	23	24	25	26	27		29

Open 10am-4pm

 Disabled access (no disabled to

## 247 Artists inspired by nature Mixed media

S	S	M	T	W	T				
20	21	22	23	24	25				

Open 10am-5pm except 25th until 1pm

Uneven gravel path, **P** Drive & street parking





## 253 Chris Stapleford, Susan Wakefield & Steve Armon Painting, mixed

Work influenced by the British land and seascape using oil & acrylic paints, pastels and other media.

**19 St Marys Road, Stubbington, PO14 2HP**

07387 840052 susanwakefield19@hotmail.co.uk

Instagram & Facebook susanwakefieldart

Instagram @chrisstaplefordart @stevearmonart

M27-J9 follow A27 south until reaching B3334 to Gosport. Follow B3334 south to Stubbington, after 1.5 miles turn left into St Marys Rd. Take side path into garden.

S	S	M	T	W	T	F	S	S	M
20	21				25	26	27	28	29

Open 10am-5pm

No wheelchair access

Street parking



## 254 Maggie Storm & Richard Pearce Printmaking, papercuts

Printmaker Maggie Storm and paper-cutter Richard Pearce present a variety of works on paper - wood engravings; papercuts; cyanotypes; artists' books; greetings cards.

**55 Gosport Road, Stubbington, Hampshire PO14 2AW**

07817 542122 21 maggiestorm@gmail.com

Instagram @hospearcestorm

From Stubbington centre follow B3334; past Harold Road on left and venue is then 25 metres on left. Google maps: use address not post-code.

S	S	M	T	W	T	F	S	S	M
20	21	22	23	24	25	26	27	28	29

Open 10am-5pm

Gravel drive, step

Side roads, easy walk from village car parks



## 251 Art in The Tanneries Group, mixed

A group exhibition of contemporary art including mixed media, homeware, glass, driftwood cottages, prints & cards. Work from Port & Lemon, Swanwick Studio, Josh Langley & Ideas dekor.

**Unit 5C The Tanneries, East Street, Titchfield PO14 4AR**

07929 525012 info@swanwickstudio.co.uk

Facebook @artinthetanneries

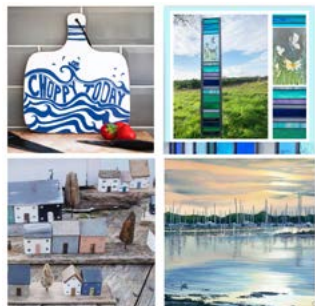
From A27 - follow signs for Titchfield village. The Tanneries is just off the A27 gyratory on the left.

S	S	M	T	W	T	F	S	S	M
20	21	22	23	24	25	26	27		

Open 10am-4pm

no wheelchair access - first floor

Titchfield Community centre - 2 mins away



## 255 Ollie Chappell & Rose Bates Indoor, outdoor, ceramics

Delightful venue with indoor and outdoor facilities exhibiting a huge variety of pieces for your home and garden, including Raku, Stoneware, and Crystalline Pots, vases and Ornaments.

**67 Gosport Road, Stubbington, Fareham, PO14 2AN**

01329 665557 07899 654763

enquiries@ollies-raku.co.uk www.ollies-raku.co.uk

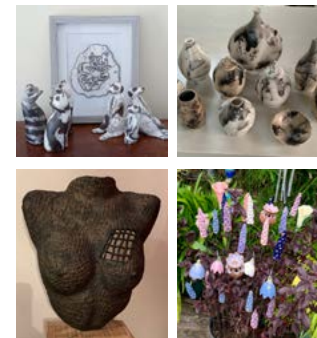
From Stubbington Village head towards Gosport along the B3334, go past Harold Road on the left and No 67 can be found 200 metres further along on the left.

S	S	M	T	W	T	F	S	S	M
20	21	22	23	24	25	26	27	28	

Open 10am-5pm

Gravel drive, narrow path, 1 step

Drive & road parking; easy walk from village



## 252 Deb C Morris Mixed media, textiles, print

Welcome to my home studio exhibiting unique, contemporary textile artworks and whimsical watercolours plus prints, cards and 'Sew your Own' kits. 'Exciting artworks that are bold, fresh and fun.'

**DCM Artworks Studio, 7 Larches Gardens, Fareham, PO15 5LR**

07590 807621 deb@debcmorrisartworks.com

http://debcmorrisartworks.com

Following the A27 from Titchfield to Fareham, Catisfield Road is on the left near the pub [on right]. First left and I'm tucked away at the end of the cul-de-sac.

S	S	M	T	W	T	F	S	S	M
20	21				25	26	27	28	29

Open 10am-5pm

One step

Easy on-road parking



## 256 Country Crafts Design, sewing, textiles

Local crafters producing creative & original handmade items in fused glass & natural fibres. Includes patchwork quilts & bags, felted hats & bags, wool socks & hand knitted shawls. Covid secure venue, refreshments available.

**6 Stuart Close, Stubbington, Fareham, PO14 2PD**

01329 662671 royrolf6@gmail.com

Close to bus main route.

S	S	M	T	W	T	F	S	S	M
20	21	22	23	24	25	26	27	28	29

Open 10am-5pm

2 steps

Street parking





## 257 Wat's On Glass & The Welsh Woodman

Glass, wood carving

**Wat's On Glass:** Bespoke handmade fused glass, house numbers, garden stakes, wall art, ashes in glass, personalised gifts, splashbacks. I'll create your design. Courses, classes & demo's. Refreshments offered, credit cards accepted.  
**The Welsh Woodman:** Sustainably sourced, quality hand crafted wooden products. Please drop by for a live demonstration or visit the Welsh Woodman You Tube Channel.

**10 Kingsmead Ave, Stubbington, PO14 2NL**

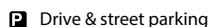
07535 783 805

watson.glass@aol.com www.watsonglass.co.uk

From Stubbington village roundabout, head towards Lee On Solent for ½ mile, Kingsmead Ave is directly opposite the Golden Bowler Pub. No 10 on LHS.

S	S	M	T	W	T	F	S	S	M
20	21	22	23	24	25	26	27	28	29

Open 10am-5pm



## 258 The Hill Head Gallery Mixed media, pictures

Locally sourced artwork for all occasions and budgets. Mixed media paintings, mushrooms, miniature houses and other tiny things. We also have lots of seaside and beach inspired gifts.

**15 Cuckoo Lane, Hill Head, PO14 3PF**

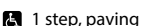
07803 504345 thehillheadgallery@gmail.com

www.thehillheadgallery.com

Access to the venue is via Plover Close. Please go through the gate and archway and the summer house is on your right.

S	S	M	T	T	F	S	S	M
20	21	22	23	25	26	27	28	29

Open 10am-4pm



## 259 Misty Ceramics

Ceramics, pyrography

Celebrating The Coast Through Art. Karen Townsend is an artist with a Saltwater Spirit who captures the mysteries of the sea and nature, exploring forms in clay and wood. Pyrography demonstrations throughout the week.

**37 Cottes Way, Hill Head, PO14 3NQ**

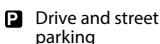
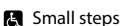
07771 598893

misty.ceramics@gmail.com www.mistyceramics.co.uk

Cottes Way runs (north to south) between Carisbrooke Ave and Hill Head coast Road. Studio access via side gate.

S	S	M	T	W	T	F	S	S	M
20	21	22	23	24	25	26	27	28	29

Open 10am-5pm



## 260 (Old) Birds By The Sea Painting, oil, mixed media

Jean Dean and Debbie Jarman will be showing their bright, bold and fun mix of land/seascapes, portraits, and figurative works, serving tea, coffee and cakes for charity.

**15 Monks Way, Hill Head, PO14 3LU**

07803 563667 jean.dean255@icloud.com

debbiejamjar@gmail.com

From Stubbington follow sign for Titchfield Haven, at sharp right turn take road ahead towards the sea, 1st left into Seafeld Park Road, 1st right into Monks Way. No 15 at the end on left.

S	S	M	T	W	T	F	S	S	M
20	21	22				26	27	28	29

Open 10.30am-4.30pm (Closing at 2pm on 29th)



Gravel Drive, 1step



Drive & street parking

## 261 Laurence Bagley

Painting, prints

Laurence Bagley (1922-1983) Centenary Exhibition: Hidden in the archives for decades, these exquisite paintings of local scenes from Laurence Bagley, master of dramatic seascapes, are displayed for the first time.

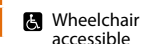
**5 Cottes Way East, Hill Head, Fareham, PO14 3NG**

07443 411511 www.laurencebagley.com

From Stubbington village follow Stubbington Lane. Turn right into Bells Lane. Pass the Crofton pub and turn right into Cottes Way East. We are the last house on the left.

S	S	M	T	W	T	F	S	S	M
20	21					26	27	28	29

Open 11am-5pm



## 262 Coffee Pod Creations Jewellery, mixed, upcycling

Come and discover how aluminium coffee pods are upcycled into unique pieces of jewellery and accessories. See Victoria working and perhaps purchase something original and sustainable. New Designs for 2022.

**3 Ellerslie Close, Hill Head, PO14 3LH**

07834 225368 coffeepodcreations@gmail.com

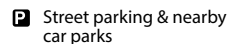
www.etsy.com/uk/shop/CoffeePodCreations

Ellerslie Close is a cul-de-sac at the eastern end of Hill Head Road.



S	S	M	T	W	T	F	S	S	M
20	21	22	23			26	27	28	29

Open 11am-5pm





**263 Max Salsbury** *Mixed media, metal, polychrome*  
 Abstract painter using acrylics and water-based paints; vibrant signature colourways. Polychrome roundels, driftwood spars, painting on canvas and on distressed metal along with upcycled, beachcombed objects of interest.  
**2 Ellerslie Close, Hill Head, Fareham, PO14 3LH**  
 07825 773411 max.salsbury@gmail.com

*Follow Crofton Land into village as if going to the sea; take sharp bend into Hill Head Road and 50 yards turn right into Ellerslie Close*

S	S	M	T			F	S	S	M
20	21	22	23			26	27	28	29

Open 10am-5pm  
 ♿ Flat surface, gravel drive **P** Drive & street parking



**266 John Cook at Morpheus Ceramics** *Sculptures, ceramics, pottery*  
 The work is a selection of fine art sculpture & ceramic arts including pottery.  
**9 Osborne View Road, Hill Head, Fareham, PO14 3JW**  
 07482 070733 johniancook@gmail.com  
 morpheus-ceramics.business.site

*Osborne View Road, off Hill Head Road is 3 mins walk from the sea and Osborne View Pub. Number 9 is on left. Studio accessed at back of house*

S	S	M	T	W	T	F	S	S	M
20	21	22	23	24	25	26	27	28	29

Open 10am-5pm  
 ♿ Accessed at back of house. Small step **P** Free street parking



**264 Jennifer Thorpe** *Soft pastel*  
 Recently I've enjoyed painting large seascapes in oil, these will be in the exhibition alongside my soft pastel and resin work. Come and visit, its going to be my biggest exhibition yet, taking over the garden (marquee), studio and new this year a dedicated gallery space in the house.  
**1A Hill Head Road, Hill Head, Fareham, PO14 3JH**  
 07962 176546 jenniferthorpeart@gmail.com  
 www.jenniferthorpeart.com

*Turn onto B334 Titchfield Road from A27, turn right onto Cuckoo Lane, turn right onto Crofton Lane. At the sharp right bend onto Hill Head Road we're first on left.*

S	S	M	T	W	T	F	S	S	M
20	21	22	23	24	25	26	27	28	29

Open 10am-5pm  
 ♿ Gravel, path wheelchair accessible **P** Drive, street & nearby car park



**267 Strandline: Elaine Reed, Chris Lewis, Caroline Shields & Sue Wells** *Paintings, prints, craft*  
 The tops of the Downs, the agricultural landscapes, past rivers to the sea are our constant inspiration. The magic of it is the source of all our work.  
**8 Osborne View Road, Hill Head, Fareham, PO14 3JN**  
 07799 850552 bellarossa@talktalk.net  
 Instagram @elainereedart Facebook@chrislewisart  
 Instagram @caroline.m.shields Facebook @antrobustjewels  
 From Stubbington leave village on Lee-on-Solent road. Take first right (signposted Titchfield Haven) Drive approx. 1 mile to coast. Our street is 7th on right.

S	S	M	T	W	T	F	S	S	M
20	21	22	23	24	25	26	27	28	29

Open 10am-5pm  
 ♿ 2 steps **P** Street parking



**268 David Brims** *Photography, mixed media*  
 Photography tending towards art. Printed on to watercolour paper. A wide variety of subjects including local scenes, flowers seascapes and abstract. Cards also available.  
**Sleepy Hollow, 25 Knights Bank Road, Hill Head, Fareham, PO14 3JY**  
 01329 663453 dhbrims@gmail.com www.davidbrims.com  
*With the Osborne View Pub on your left continue onto Cliff Road and take the second right, Knights Bank Road. No 25 on left.*

S	S	M	T			F	S	S	M
20	21	22	23			26	27	28	29

Open 10am-5pm  
 ♿ 2 steps, wheelchair possible **P** Road Parking. Disabled in drive



**265 Sara Pitkeathly & Gilli Gregory** *Painting*  
 Gilli and Sara invite you to their Exhibition by the Sea. Expressive paintings inspired by the sea and nature. Oil, Acrylic and watercolour, capturing wonderful atmospheric and magical moments.  
**47 Hill Head Road, Hill Head, Fareham, PO14 3JL**  
 07796 147889 sarapitkeathly@hotmail.com  
 www.sarapitkeathlyart.co.uk gilligregory.uk

*From M27 junction 9 take B3334 to Stubbington, then straight to Stubbington Lane, take first right into Bells Lane and after 1 mile No 47 is on your left. (just before the Osborne View Pub and Breezes Cafe).*

S	S			W			S	S	M
20	21			24			27	28	29

Open 10am-5pm  
 ♿ Steep steps to waterfront location **P** Street parking



**269 Solent Art Society** *Group, painting, craft*  
 This friendly art group meet & work together every week at LOSCA in Lee. A fine mix of subjects, styles & techniques in our paintings & crafts on display.  
**Royal British Legion, 155-157 High Street, Lee-on-Solent, PO13 9BX**  
 07532 239191  
 solentartsociety@gmail.com www.solentartsociety.co.uk  
*Coming along the coast road from Stubbington; turn left into Milvil Road as the shops start. Right hand lane turns into High Street, Royal British Legion shop 200m down on the right*

S	S	M	T	W	T	F	S	S	M
20	21	22	23	24	25	26	27	28	29

Open 10am-5pm  
 ♿ Wheelchair accessible **P** Street & beachside car parks



**270 Rose & Bruce Thomas** Ceramics, textiles, watercolours  
 We are both makers. Bruce hand builds decorative ceramics and garden sculpture. Rose makes stitched textiles, paints in watercolour and works with mixed media. Colourful cards available.  
**6, Clanwilliam Road, Lee-on-the-Solent, PO13 9HX**  
 02392 551873 / 07979 486627  
 brucerthomas@btinternet.com www.allmadebyrose.com

From Lee High street (one way), turn left into Studland Road. Clanwilliam Road is 2nd right. From Russell Road turn into Clanwilliam Road by the post box.

S	S	T	W				S	M	
20	21	23	24				28	29	

Open 10am-4pm  
 ♿ Uneven gravel paths. Step. Lawn  
 P Ample street parking



**274 Kim Raymond** Drawing, painting, watercolour  
 Ex-Disney artist Kim Raymond presents an exhibition of life studies in pencil and watercolour in a celebration of the human form.  
**4A Palmerston Way, Alverstoke, Gosport, PO12 2LZ**  
 kim@kimraymond.com  
 www.kimraymond.com

Head for Stokes Bay and Palmerston Way is the last street on Jellicoe Avenue before the sea.

S	S	M				F	S	S	M	
20	21	22				26	27	28	29	

Open 10am-5pm  
 ♿ Gravel drive, max three steps  
 P Street parking/ car park nearby



**271 Lee on the Solent Art Group** Group, mixed  
 This vibrant art group invite you to view an eclectic mix of paintings and crafts: jewellery, woodwork, fabrics and cards. Daily demonstrations. Light refreshments with delicious cakes available. Cash sales only.  
**Lee-on-the-Solent Junior School, Salisbury Terrace, Lee-on-the-Solent, PO13 9DL**  
 Facebook @lee-on-the-solent-art-group  
 From Marine Parade East (Lee sea front) turn into Cambridge Road, then 2nd right into Salisbury Terrace. Follow pink signs for parking

S	S	M	T	W	T	F	S	S	M	
20	21	22	23	24	25	26	27	28	29	

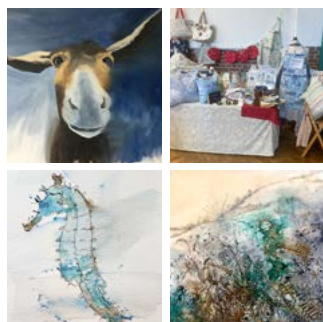
Open 10am-5pm  
 ♿ Wheelchair accessible  
 P On site parking



**275 Maggie Cochran** Painting  
 Contemporary landscape artist. Evocative paintings of the sea and the coastal landscape in acrylics and oils.  
**68 Crescent Road, Gosport, PO12 2DN**  
 07503 253710 maggiecochranart@gmail.com  
 www.maggiecochranart.com  
 Travel east along Stokes Bay Road to mini roundabout. Take first exit onto Anglesey Rd. Turn immediately right into Crescent Rd. 68 is second house on the right.

S	S			W		F	S			
20	21			24		26	27			

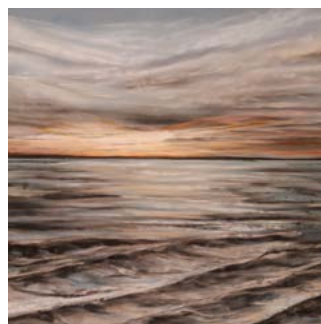
Open 11am-5pm or by appointment  
 ♿ Gravel path  
 P Street parking



**272 Tania Wilkie, Anne Howard, Mel Gillett** Mixed  
 Affordable paintings of animals (sometimes quirky), landscapes, seascapes, portraits, abstracts & still life in a range of media & styles. Also colourful handmade home textiles, cards, prints & other craft items. Credit/debit cards accepted or bank transfer. Complimentary cuppa & cake in the garden.  
**52 Portsmouth Road, Lee-on-the-Solent, PO13 9AG**  
 07803 966703 (Tania) / 07973 412899 / 07947 053939  
 taniawilkie1@gmail.com www.taniawilkie.com  
 From Lee centre (Pier Street), turn left into Marine Parade (B3333), continue straight onto Portsmouth Road. After 1 mile, number 52 is on left hand side after first turning for York Crescent. Look out for the flags.

S	S		T	W	T	F	S	S	M	
20	21		23	24	25	26	27	28	29	

Open 10am - 5pm  
 ♿ Disabled parking on drive. Wheelchair access  
 P Parking in nearby York Crescent



**276 Jackie Boggeln** Soft pastel  
 I am an amateur soft pastel artist. I started using this medium two years ago and specialise in seascapes of my local beach, sunsets and sunrises being particular favourites.  
**39 Kensington Road, Gosport, PO12 1QY**  
 07837 461659 jackie@boggeln.co.uk  
 Heading down towards Gosport ferry take the B3333, Kensington Road on the right opposite the back of Waitrose.

S	S					F	S	S	M	
20	21					26	27	28	29	

Open 1.30pm-5pm  
 ♿ 2 steps  
 P Street parking



**273 Julie Barker - Hampshire Hog Woodturning**  
 Acrylic pouring, wood, resin  
 Woodturned gifts ranging from bowls, vases and little pots to wood and resin apples, hollow forms and dragons! I use beautiful, local sustainable wood and occasionally exotic woods.  
**29 Davenport Close, Gosport, PO13 8ES**  
 07970 461914 info@HampshireHogWoodturning.co.uk  
 hampshirehogwoodturning.co.uk  
 From Grange Road, turn into Howe Road. Davenport Close is the 5th turning on the right. As you turn into Davenport Close, follow the pink arrows.

S	S		T	W	T	F	S		M	
20	21		23	24	25	26	27	29		

Open 10am-4pm  
 ♿ Wheelchair accessible  
 P Off road parking, driveway



**277 Time at the bar please** Painting, mixed media, 3D  
 An exhibition celebrating Gosport's pub culture will run from 15th to 29th August and will feature contributions in mixed media and 3D works from local artists. Public houses are part of Gosport's heritage and can be a source of inspiration for any artist.  
**Yellow Edge Gallery, 107 Stoke Road, Gosport, PO12 1LR**  
 pubculture2022@gmail.com yellowedgegallery.com/  
 Stoke Road is a short walk / taxi ride from Gosport Ferry, up the High Street. The gallery is just before Waitrose on your left.

S	S	M	T	W	T	F	S	S	M	
20	21	22	23	24	25	26	27	28	29	

Open 11am-3pm weekdays & 12-5pm weekends  
 ♿ Wheelchair accessible  
 P Jamaica Place South car park - Free



## 278 The Art Pod Collective Group, mixed

A collective of artisans at varying stages in their creative journeys who have all had a connection to The Art Pod Studio, Gosport.

**The Art Pod Studio, Unit 16 Cooperage Green, Weevil Lane, Gosport, PO12 1FY** 07804 946192

alwarnerart@yahoo.com facebook @artpodartists

Follow the A32 into Gosport past St Vincent's College. At the traffic lights turn left onto Weevil Lane. Approximately 100yds turn right into Cooperage Green. We're next to Pump House Cafe.

S	S	M	T	W	T	F	S	S	M	Open 10am-5pm (except 25th & 26th 2-5pm)	
20	21	22	23	24	25	26	27	28	29	Wheelchair accessible	Public car park nearby



## 282 Art and Craft Fair at CAMS Group, mixed

An indoor craft fair featuring a variety of crafts and artists, refreshments available with free entry and parking.

**Cams Hill School, Shearwater Ave, Portchester, Fareham, PO16 8AH**

07985 070280 artandcraftatcams@gmail.com

www.theartandcraftfairatcams.com/

On A27, Fareham to Portchester Road. From Fareham, go past the traffic lights to mini roundabout double back & left at traffic lights in to Shearwater Avenue.

S	S										Open 10am-4pm	
20	21										Wheelchair access	Car park on site



## 279 Art by Ian Withall Acrylic, digital

Modern artist working in acrylics and digitally creating art in a distinct/ original style. Work previously selected by Channel 4's Grayson's Art Club. Tea, coffee, cakes in our sub-tropical garden.

**52 Findon Road, Gosport, PO12 4EP**

07825 693474

Instagram @artbyianw

From A32 at Fort Brockhurst into Elson Road for 0.6 mile, then Albemarle Ave into Findon Rd. Take side access through garage into garden.

S	S	M	T	W	T	F	S	S	M	Open 10am-5pm	
20	21	22	23	24	25	26	27	28	29	Steps	Driveway for 2 cars



## 283 Southern Nature Art Exhibition Group, mixed

Art exhibition themed on nature, including sculpture, photography, other medias, Art Market, Refreshments. Free parking and entry.

**Cams Hill School, Shearwater Ave, Portchester, Fareham, PO16 8AH**

07985 070280 southernnatureartexhibition@gmail.com

www.southernnatureart.com

On A27, Fareham to Portchester Road. From Fareham, go past the traffic lights to mini roundabout double back & left at traffic lights in to Shearwater Avenue.

						F	S	S	M	Open 10am-5pm	
						26	27	28	29	Wheelchair access	Car park on site



## 280 A Little Trinket by Anna L Tillman

Lampwork glass, jewellery, enamelling

A chance to visit my working studio and see the lampworking process as I melt glass to create home accessories and sterling silver jewellery.

**56a Portchester Road, Fareham, PO16 8QJ**

07708 830667

anna@alittletrinket.co.uk www.alittletrinket.net

The drive is in The Thicket (next to the post box), on the northern side of the A27 between Condor Avenue and Cornaway Lane roundabouts.

S	S	M	T	W	T	F	S	S	M	Open 11am-6pm	
20	21	22	23	24	25	26	27	28	29	Shallow step & restricted space	Drive or street parking



## 281 Handmade in Porchester & Friends Group, mixed

Two ceramic artists, silver jewellery, glass art and pendants, home textiles, wood N things, cards, artists' bazaar, woodturner. Refreshments, plant sales for our charity. Card payments. More details on website.

**40 Orchard Grove, Portchester, Fareham, PO16 9DX**

07990 585808 lynsfusedart@gmail.com

lynsfusedart.co.uk

A27 Fareham, Right at Wicor Roundabout, (Seagull Pub) down Cornaway Lane, bear left then immediately right into Sandport Grove, Right into Orchard Grove. Number 40 on the left.

S	S		T	W	T		S	S	M	Weekdays 10.30-4pm, Weekends & BH 10-5pm	
20	21		23	24	25		27	28	29	Accessible to garden, 2 steps	Street parking



## 284 Jill Poole Printmaking, collage

Please visit me at my home where I shall be showcasing unique artworks that include: Prints, collages, cards and cushions, all inspired by my garden and the birds and insects that inhabit it.

**15 Camelot Crescent, Portchester, PO16 8ER**

01329 318730 jillpoole33@gmail.com www.jillpoole.com

From The Seagull PH roundabout on the A27 at Portchester, take the first exit up the hill onto Dore Avenue. Continue on up the hill, turning left after Portchester Crematorium, into Camelot Crescent and follow the pink arrows

				T	F	S	S	M	Open 10am-5pm	
				25	26	27	28	29	Paved path, 1 step	Street parking



## 285 Emily Faludy Painting

Large scale, gestural oil paintings and small scale plein air studies from award winning contemporary painter Emily Faludy. A celebration of light and landscape in the sensuous tactility of paint.

**33, Solent Road, Drayton, Portsmouth, PO6 1HH**

07473 533053 [emilyfaludy@hotmail.com](mailto:emilyfaludy@hotmail.com)

[www.emilyfaludy.com](http://www.emilyfaludy.com) Instagram @emilyfaludyart

*Solent Road is just off the main Havant Road running through Drayton*

Open 11am-5pm

♿ Wood chip pathways, 2 steps

P Ample street parking



## 289 Visual Marks Textile Artists Group, mixed

A selection of diverse textiles and mixed media created by Sue Emery, Sue Evans, Janet Ferguson, Wendy Fleckner, Anne Riches, Elizabeth Saunders and Barbara Strange. Viewing continues the weekend of 3rd/4th September.

**Emsworth Museum, 10B North Street, Emsworth, PO10 7DD**

01243 378091 (Museum) / 07547919964 (Visual Marks)

[visualmarks@yahoo.co.uk](mailto:visualmarks@yahoo.co.uk) [www.visualmarks.art](http://www.visualmarks.art)

*Head towards the roundabout in the centre of Emsworth, turn north into North street and the Museum is the 2nd building on the left above the fire station.*

Open 10am-4.30pm (except 28th from 2.30pm)  
 ♿ Stair lift and disabled parking P Adjacent car park



## 286 Jane Galloway Painting

Bright, bold & colourful acrylic pictures, landscapes, surreal & abstract work.

**20 St Hellens Road, Drayton, Portsmouth, PO6 1HN**

07710 172567 [janegalloway9@hotmail.com](mailto:janegalloway9@hotmail.com)

[artsplaza.com](http://artsplaza.com)

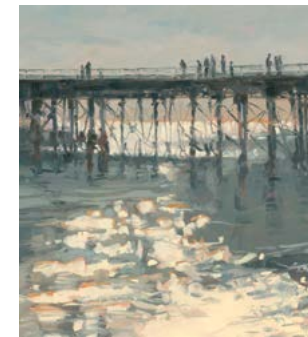
Instagram @janegalloway9

*Easy access just off the A27 and A3(M), close to Farlington Sainsburys*

Open 10am-5pm

♿ Flat access, some steps in the garden

P Plenty of free street parking



## 290 Paula Mitchell Painting, oil

Paula Mitchell captures the beauty of light and life in her landscape and figurative paintings. Working predominantly 'en plein air', Paula is an awarded artist by The Royal Society of British Artists.

**1 Old River, Denmead, Hampshire, PO7 6UX**

07786 154466

[contact@paulamitchell.gallery](mailto:contact@paulamitchell.gallery)

[www.paulamitchell.gallery](http://www.paulamitchell.gallery)

*Old River is a short distance from the main Forest Road that runs alongside the outskirts of Denmead. From Waterlooville, take the B2150 Hambledon Road towards Denmead Village. Take first exit at first roundabout onto Forest Road.*

Open 10am-5pm (except 26th until 2pm)  
 ♿ Step, ground floor gallery P Free street parking



## 287 Hotwalls Studios Group, mixed

Hotwalls Studios is home to 13 creative workspaces on Portsmouth's historic waterfront. Our popular monthly Open Studios days allow visitors to see all of our artists and makers at work.

**Hotwalls Studios, Broad Street, Portsmouth, PO1 2FS**

02392 343138 [hotwallsstudios@portsmouthcc.gov.uk](mailto:hotwallsstudios@portsmouthcc.gov.uk)

[Hotwallsstudios.co.uk](http://Hotwallsstudios.co.uk) Facebook/Instagram @hotwallsstudios

*Hotwalls Studios is easily reached by public transport; The Hard Interchange is a short walk away and offers bus, rail and coach links as well as a connection to the city's Park & Ride.*

Open 11am-4pm

♿ Wheelchair accessible

P Street, local pay & display car parks



## 291 Janet Hammerton Painting

Artist and Designer. Inner Landscapes and Native Plants. Conveying a hint of the magic that lies within our landscape from a decorative viewpoint. Prints and cards for sale.

**Dragons Hill, Green Lane, Hambledon, Waterlooville, PO7 4SX**

02392 632005 [hammerton886@btinternet.com](mailto:hammerton886@btinternet.com)

Instagram @janethammertonart

*On the B2150 between Denmead and Droxford on the outskirts of Hambledon Village. Enter through the gate marked Dragons Hill. Venue is the Coach House.*

Open 10am-5pm  
 ♿ Gravel path/ One step P Driveway parking gate entry



 making space



## 288 Making Space Craft, fine art

Explore our 7 maker studios & 2 creative spaces. Enjoy pop-up exhibitions, opportunities to make, meet the makers, buy or commission unique art & craft and discover ways you can join our creative community.

**2 Bishopstoke Road, Leigh Park, Havant, PO9 5BN**

023 9247 2491 [admin@makingspace.org](mailto:admin@makingspace.org)

[makingspace.org](http://makingspace.org)

*From Dunsbury Way turn onto Bishopstoke Road, Making Space is the low sandy coloured building on the right. 2min walk from nearest bus stop / 1.4miles from Havant Train Station.*

Open 11-4pm

♿ Accessible, parking & facilities P Pay & display car park & street parking



## 292 David Corbin Jewellery

David enjoys making wearable jewellery in an organic form working primarily in silver with gold detailing for commissions or one off pieces. See website for lessons and workshop information.

**Cricketers' Cottage, West Street, Hambledon, PO7 4SN**

02392 633950 07515 550326

[medavid1@mac.com](mailto:medavid1@mac.com) [www.benchesstudio.co.uk](http://www.benchesstudio.co.uk)

*Reaching Hambledon from Denmead you will pass The Old Forge Tea Rooms on the left. Cricketers Cottage is approx. 300 metres along on the right. Benches Studio is up the driveway adjacent to the cottage.*

10-5pm weekends & BH, 2-5pm weekdays  
 ♿ Gravel path P Street parking

Artist listing index  
followed by brochure  
venue number

2002 TEXTILE ARTISTS 85  
2D3DSOUTH 141  
50/50 PHOTO & PAINT 101  
7 ARTISTS+ 162

A LITTLE TRINKET 280  
A PIECE OF ART 74  
A TALE OF YARN 4  
ABEL, Lorna 250  
ADAMS, Margot 11  
AIM (Art in Martin) 13  
ALDINGTON, Katie 177  
ALEXANDER, Rachel 144  
ALLEN, Tory 76  
ALLINGTON ARTISTS 214  
ANDOVER ARTS 122  
ANDREWS, Jane 47

ANGELS FARM POTTERY 88  
ANTENEY, Katherine 228  
APPLEYARD, Sian 40  
ARBON, Kathryn 40  
ARCHER, Hilary A 219  
ARKELL, Jo 119  
ARMON, Steve 253  
ARMY FLYING MUSEUM 129  
ART & CO 57  
ART & CRAFT FAIR AT CAMS 282

ART AT THE PUB 69  
ART BY IAN WITTHALL 279  
ART IN THE TANNERIES 251  
ART ON THE PIER 78  
ARTFUL COLLECTIVE 40  
ARTIST FOR OAKHAVEN 63  
ARTIST INSPIRED BY NATURE 247  
ARTLINK 20  
ARTSEEN 95  
ASCENSION CHURCH 230  
ATHERLEY ARTISTS 226  
AVENUE ARTISTS 225  
AYERS, Julia 58

BABEY, Howard 86  
BAGLEY, Laurence 261  
BAKER, Cy 250  
BALDWIN, Nicola 144  
BALL, Suzanne 3  
BARBERTON, Nick 10  
BARKER, Julie 273  
BARN AT FRIENDS FARM 239  
BARNES, Sara 98  
BARTLETT, Evelyn 71  
BARTLETT, Lisa 172  
BARTLEY HEATH POTTERY 167  
BATES LITTLE, Susan 176  
BATES, Amanda 159  
BATES, Rose 255  
BEAVIS, Lisa 209  
BEE, Linda 140  
BEECHES GARDEN 202  
BEGGS, Cathy 52  
BELBEN, Daniel 229  
BELCHER, Irene 135  
BELL, Caroline 135  
BELL, Lucinda 159  
BENNETT, Kate 128  
BENNETT, Keith 147  
BENTLEY, Jill 11  
BINNEY, Sandra 71  
BLACKSTONE CHALK 104  
BLISS, Melanie 155  
BLISS, Veronica 137  
BOGGELN, Jackie 276  
BOLTON, Alison 64  
BOURDON SMITH, Jessica 13  
BOWEN, Hilary 5  
BOWLER, Colin 240  
BRADLEY, Ellen 19

BRADLEY, Imogen 19  
BRADSHAW, Bridget 250  
BRAISHER, Mike 40  
BRAMALL, Wendy 138  
BRIMS, David 268  
BRIND, Jane 159  
BROPHY, Gill 101  
BROPHY, Roy 101  
BROUGHTON VILLAGE ART 110  
BROUGHTON, Viv 2  
BRUTY, Sharron 229  
BUGG, Bridget 57  
BULL, James 57  
BUNDA, John 77  
BURLEIGH, Charlotte 13  
BURLEY ART CLUB 31  
BURLEY LIFESTYLE 30  
BURNS, Tim 178  
BURT, Pat 159  
BUSTOPOTS 162  
BYRNE, Danny 26

CALDER, Christine 49  
CAMPANELLA, Isil 65  
CAMPBELL, Debra 78  
CANDY, Sharon 205  
CARMONA, Isabel 162  
CARPENTER, Jules 46  
CARTER, Nick 238  
CASE, Ian 105  
CAVE, Belinda 202  
CHALK, Matthew 104  
CHALKS GALLERY 56  
CHALLENGE GROUP 112  
CHANDLERS FORD ART 216  
CHAPEL ARTS STUDIOS 121  
CHAPMAN, Inga 205  
CHAPMAN, Jonathan 153  
CHAPMAN, Susan 135  
CHAPPELL, Ollie 255  
CHAPPELL, Rachel 101  
CHARMAN, Kate 11  
CHASE & CHALK 12  
CHEW, Linda 215  
CHISHOLM, Josephine 145  
CHRIS MADE THIS 41  
CHRISTIE, Theresa 197  
CHRYSTALL, Harry 108  
CHURCH HILL STUDIO 50  
CHURCH, Catherine 136  
CLARKSON, Tracey 162  
COACH HOUSE STUDIO 7  
COCHRAN, Maggie 275  
COCKROFT, Colleen 101  
COE, Tessa 105  
COFFEE POD CREATIONS 262  
COLE, Lindsey 11  
COLE, Lindsey J 22  
COLLEGE ARTS 175  
COLLING, Frankie 240  
COLLINS, Julie 48  
COLYER, Sue 196  
COOK, John 266  
COOMBE, Rick 34  
COOMBE, Sally 34  
COOPER, Paul 3  
COOPER, Steve 38  
CORBEN, Angela 14  
CORBIN, David 292  
CORNALL, Ria 173  
CORNER, Jane 33  
COUNTRY CRAFTS 256  
COURTYARD GALLERY 192  
CRAWFORD, Joan 159  
CROCKER, Malcolm 84  
CROOK, Sue 162  
CRUYER, Peter 36  
CSTAR DESIGN 241  
CUNNING AS A FOX 162  
CURTIS, Bailey 135  
CURTIS, Emily 223

DANBY, Kate 50  
DANIELS, Paul 9  
DASHWOOD, Geoffrey 23  
DAVID, Pradeepa 222  
DAVIES, Maureen 11  
DAVIS, Chris 127  
DAVIS, Rachel 162  
DAWSON, Ann 105  
DAWSON, Ursula 135  
DE GARIS DESIGNS 210  
DE LE GARDE, Nadege 250  
DE SALIS, Wendy 7  
DEAN, Jean 260  
DEANS, John 105  
DEARDEN, Gina 68  
DELANY, Norma 50  
DELL, Liz 126  
DEVILLE, Leo 93  
DICKENS, Joy 86  
DICKER, Kate 228  
DIXON, Lesley 167  
DIXON, Mick 167  
DOLPHINS STUDIO 244  
DONOVAN, Heidi 13  
DOVE, Rob 243  
DOVE, Sue 135  
DREW, Gill 40  
DUDFIELD, Michael 156  
DUKE, Roy 197  
DURNGATE TERRACE 148  
DYNE, Helen 162

EAGLE, Annie 162  
EALDES, Lyn 209  
EATON, Judith 105  
ECLIPSE PHOTOGRAPHY 123  
EDWARDS, Steph 218  
EDMONDSON, Sherry 159  
ELEMENTS DESIGN STUDIO 28  
ELLIS, Maria 169  
EMERY, Sue 289  
ENGLISH, Samantha 58  
ETTRIDGE, Georgina 40  
EVANS, Sue 289  
EYLEY, Brian 209

FALUDY, Emily 285  
FARLEY ARTISTS 102  
FERGUSON, Janet 289  
FERNIE, Lizzie 13  
FERRAR, Claire 47  
FINN, Andrea 8  
FLECKNER, Wendy 289  
FLEET, Penny 171  
FLETCHER, Alexander 19  
FLETCHER, David 19  
FORCE 8 211  
FORDHAM, Chantal 65  
FOREST AND COVE 96  
FOREST ARTS CENTRE 44  
FOULKES, Bethan 240  
FOULKES, Steve 240  
FRENCH, Sylvia 131  
FRESHWATER, Enid 52  
FROST, Peter 82  
FRY, Barry 101

GALLERY NO. 30 195  
GALLOWAY, Jane 286  
GEAR, Dawn 40  
GIBBONS, Eric 66  
GIBBS, Hazel 40  
GILBERT, Nicky 9  
GILBERT, Pete 9  
GILLETT, Mel 272  
GLOVER, Judi 13  
GOODMAN, Clare 142  
GOODRIDGE, Ruth 250  
GORE, Sally 50  
GOWER, Jill 78  
GRAINGER, Joyce 49  
GRANARY STUDIO 135

GRANDE, Bridget 177  
GRANDE, Robert 177  
GRANT, Gill 155  
DAVID, Pradeepa 222  
GRAY, Brian 246  
GRAY, Rachel 18  
DAVIS, Chris 127  
DAVIS, Rachel 162  
DAWSON, Ann 105  
DAWSON, Ursula 135  
DE GARIS DESIGNS 210  
DE LE GARDE, Nadege 250  
DE SALIS, Wendy 7  
DEAN, Jean 260  
DEANS, John 105  
DEARDEN, Gina 68  
DELANY, Norma 50  
DELL, Liz 126  
DEVILLE, Leo 93  
DICKENS, Joy 86  
DICKER, Kate 228  
DIXON, Lesley 167  
DIXON, Mick 167  
DOLPHINS STUDIO 244  
DONOVAN, Heidi 13  
DOVE, Rob 243  
DOVE, Sue 135  
DREW, Gill 40  
DUDFIELD, Michael 156  
DUKE, Roy 197  
DURNGATE TERRACE 148  
DYNE, Helen 162

HADDON-MOORE, Diane 132  
HAMMERTON, Janet 291  
HAMPSHIRE HOG WOOD. 273  
HANCEY, Gillian 162  
HANDMADE IN PORCHESTER 281  
HARRIES, Jon 117  
HARRIES, Susie 117  
HAWKER, Jan 69  
HAWKEY, Caroline 199  
HAWKINS, Susan 131  
HAWKSBURY PRINT 162  
HAYWARD, Anne 212  
HAYWARD, Brian 142  
HAYWARD, Richard 212  
HEARD, Jasmin 247  
HEARD, Nicky 247  
HEYWOOD, Tom 105  
HILL-NORTON, Jenny 183  
HILLVIEW ART 24  
HIRON, Caroline 40  
HODGSON, Graeme 240  
HODDINOTT, Ann 159  
HOTWALLS STUDIOS 287  
HOUSE OF REDGRAVE 180  
HOWARD, Anne 272  
HOWARD-JONES, Phil 177  
HURRELL, Nikki 135  
HYSLOP, Sue 129

IDEAS DEKOR 251  
IRVING, Sammy 197  
ISLAND VIEW STUDIOS 61

JARMAN, Debbie 260  
JAUNDRELLS STUDIO 43  
JALBERT, Rosalind 99  
JELBERT, Wendy 99  
JEN BEST TEXTILE ART 130  
JENESON, Susan 54  
JENNINGS, Jill 105  
JENNINGS, Tobie 155  
JOLLIFFE, Heather 47  
JONES, Barry 118  
JONES, Colin 33  
JONES, Karen 174  
JONES, Sue 118  
JUBILEE ART & CRAFTS 35  
JUDAH, Catherine 61  
JUST SO STUDIO 38  
JUST US FOUR 137

KELLY, Sue 21  
KENNARD, Barbara 42  
KENNISH, Jenny 158  
KERRIGAN-HARRIS, Sue 80  
KEYHAVEN ARTISTS 54  
KING, Ben 19  
KING, Mike 19  
KING, Steve 19  
KING'S CHURCH 224  
KJHAMMOND ART 249  
KNOTT, Geoff 24  
KNOTT, Lin 235  
KOCIEJOWSKI, Bobbie 10  
KOWALSKI, Alexa 233

LAMB, Sandi 105  
LANDFORD PHOTOGRAPHY 86

LANE, Julia 165  
LANGFELD, Jackie 11  
LANGLEY, Josh 251  
LAPAGE, Jo 71  
LARKIN, Tracey 162  
LATHAM, M'eudail 52  
LATHWELL, Barbara 52  
LE POIDEVEN, Kay 234  
LEE ON THE SOLENT ART 271  
LESTER, David 33  
LEUCHERS, Max 229  
LEVELL, Ally 32  
LEWIS, Chris 267  
LEWIS, Clare 18  
LIEPINS, Maija 124  
LINSLEY, Zara 46  
LITTLE DUCK FORGE 24  
LLEWELLYN, Laura 162  
LOWRES, Emma 150

MACMILLAN, Angie 227  
MACMILLAN, Robin 227  
MADE IN THE HOOD 114  
MAGUIRE, Jill 215  
MAHONEY, Lois 202  
MAKING SPACE 288  
MANDER, Sarah 228  
MANSARD ARTISTS 149  
MARIE, Jessica 144  
MARINER'S STUDIO 205  
MARLOW, Chris 105  
MARLOW, Christine 109  
MARR, Frances 10  
MARSH, Abigail J 188  
MARSHALL, Jackie 57  
MARTEN, Maggie 182  
MARTIN, Jane 198  
MARTIN, Jill 195  
MARTIN, Paul 195  
MASON, Frances 67  
MAUGY, Sandrine 232  
MAUNSELL, John 60  
MAUNSELL, Linda 60  
MAX SALSBURY 263  
MAYERS, Aileen 161  
MAYNARD, Rebecca 115  
MCCARTHY, Cathy 40  
MCGHIE, Donna 139  
MCGIVERN, Jake 29  
MCINTYRE BROWN, Katy 107  
MCNAMARA, Dee 250  
MEREDITH, Clive 250  
METCALFE, Penny 155  
MICHAELSON, Jenny 105  
MILES-KLOMP, Petra 105  
MILEUSNIC, Carol 69  
MILLER, Linda 215  
MISTY CERAMICS 259  
MITCHELL, PAULA 290  
MIXED MEDIA TRIO 118  
MOBBS, Graham 172  
MOLTENO, Ferelith 111  
MOLYNEUX, Brenda 75  
MOLYNEUX, Chris 75  
MOODY, Mark 19  
MOODY, Ron 242  
MOODY, Trish 242  
MORGAN, Jenny 100  
MORGAN, Laurence 190  
MORPHEUS CERAMICS 266  
MORRELL, Clare 49  
MORRIS, Deb C 252  
MOUNTWOOD POTTERY 206  
MULLINS, Tim 184  
MUNCASTER, Jenny 144  
MURCHIE, Helen 137  
MURPHY, Kathie 10  
MURRELL, Len 158  
MY925DESIGNS 243

NEWBIGIN, Margaret 197  
NEWE FRIENDS GROUP 37  
NGUYEN, Lesley 205  
NICHOLAS, Lucinda 3  
NINA'S FUSED GLASS 73  
NORMAN, Bob 3  
NORTH END STUDIO 111  
NS\_SCULPTURE 243  
ODIHAM ART GROUP 170  
(OLD) BIRDS BY THE SEA 260  
OGDEN-SMITH, Jane 202  
ORCHARD, Alison 189  
ORCHARD, Sarah 7  
OSBORNE, Julia 65  
OSMAN, Jo 88  
O'SULLIVAN, Christine 109  
OXENHAM, Rebecca 231  
PAGE, Sue 54  
PAKENHAM, Jeannie 137  
PALAIS DES VACHES 70  
PALMER, Helen 250  
PANNETT, Liz 68  
PARMLEY, Rosie 144  
PATTISON, Keith 125  
PAUL, Richard 93  
PEARCE, Richard 254  
PEARCE, Sarah 91  
PEASE, Vanessa 111  
PEILL, Ian 116  
PENNY, Janie 17  
PERKINS, Caroline 124  
PERKINS, Jayne 160  
PERRETT, Angela 24  
PERROTT, Jane 135  
PETERSFIELD ARTS PACS 193  
PINCKNEY, Geoff 72  
PING & LILY 133  
PITKEATHLY, Sara 265  
PLATT, Rachel 215  
POOLE, Jill 284  
PORT & LEMON 251  
PORTER, Becks 221  
PUCKERING, Jane 39  
PURCELL, Lynn 1  
PURTILL, Jacky 162

QUARTET 112  
RACE, Robert 10  
RAWLINGS, Sue 192  
RAYMOND, Kim 274  
REDDY, Vasu 212  
REED, Carol 37  
REED, Elaine 267  
RICHARDS, Ann 212  
RICHES, Anne 289  
RIDSDALE, Anne 109  
RINGWOOD ART SOCIETY 25  
ROAKE FARM STUDIO 109  
ROBINSON, Jeanie 24  
ROBINSON, Paul 99  
ROGERS, Teresa 2  
ROLLS, Jacqueline 209  
ROMSEY ART GROUP 92  
ROMSEY PAINT & CLAY 97  
ROSE, Charlotte 139  
ROUSSEAU, Barbara 52  
ROYLE, Marion 62  
RUBIRA, Sue 239  
RUBY & JACK DESIGN 162  
RUSHES ROAD CREATIVES 197  
RUSSELL, Bruce 186  
RUSSELL, Phil 197

NERVA, Valerie 15  
NEW ROAD ARTISTS 105

SEAVIEW STUDIO 243  
SELDON, Keith 13  
SEY, Eileen 51  
SEY, Peter 51  
SEYMOUR, Emma 177  
SHAPLAND, George 3  
SHARD, Elizabeth 179  
SHARP, Vanessa 62  
SHIELDS, Caroline 267  
SILL, Helen 197  
SILVERSNAIL PRINTS 162  
SIMMONS, Shandy 72  
SIMPSON, Consuelo 166  
SIMPSON, Jill 163  
SIMPSON, Phoebe 166  
SINGH, Kuljit 229  
SLATER, Martin 11  
SLK CERAMICS 243  
SMALL, David 209  
SMARTISTSTUDIO 248  
SMITH, Emily 144  
SMITH, Gillian 11  
SMITH, Jerry 204  
SMITH, Katie 162  
SMITH, Mandy 237  
SMITH, Mary E 64  
SNOOK, Debbie 250  
SOLENT ART SOCIETY 269  
SOPHIE & SUE 217  
SOUTHERN NATURE ART 283  
SOUTHWELL, Helen 3  
SPEAR, George 194  
SPEIGHT, Daphne 24  
SPENDER, Clare 40  
SPLINTERS 52  
SPRAGG, Joanna 188  
SPRING, Jane 86  
SPUDWORKS GALLERY 40  
STAPLEFORD, Chris 253  
STEPHENS, Pauline 29  
STEPHENS, Roger 9  
STEPHENSON, April 250  
STOPHER, Gill 52  
STORK, John 59  
STORM, Maggie 254  
STRANGE TIMESQUESTS 151  
STRANGE, Barbara 289  
STRAWBERRY FIELDS ART 164  
STUDIO 8 159

STUDIOZO GLASS 213  
SUNNY OUTSIDE 200  
SUNNYFIELDS ARTS 81  
SUTHERLAND, Sue 16  
SUTTON, Jenny 45  
SWANWICK STUDIO 251  
SYMES, Garry 37  
TAKE 10 ARTISTS 11  
TALLIS, Jocelyn 40  
TANNER, Liz 4  
TAYLOR, Marilyn 103  
THE ART BEATS 157  
THE ART POD COLLECTIVE 278  
THE BARN EMPORIUM 191  
THE COLOUR FACTORY 144  
THE CRAFT COLLECTIVE 168  
THE HILL HEAD GALLERY 258  
THE MONDAY PAINTERS 90  
THE WELSH WOODMAN 257  
THE YARD STUDIOS 146  
THEOBALD, Helen 57  
THOMAS, Bruce 270  
THOMAS, Rose 270  
THOMPSON, Jonathan 185  
THOMPSON, Sheila 52  
THOMSON, Krista 202  
THORPE, Jennifer 264  
TILLEY, Marianne 165  
TILLMAN, Anna L 280  
TIME AT THE BAR PLEASE 277  
TINKLER, Sue 152  
TOWNSEND, Karen 259

QUARTET 112  
RACE, Robert 10  
RAWLINGS, Sue 192  
RAYMOND, Kim 274  
REDDY, Vasu 212  
REED, Carol 37  
REED, Elaine 267  
RICHARDS, Ann 212  
RICHES, Anne 289  
RIDSDALE, Anne 109  
RINGWOOD ART SOCIETY 25  
ROAKE FARM STUDIO 109  
ROBINSON, Jeanie 24  
ROBINSON, Paul 99  
ROGERS, Teresa 2  
ROLLS, Jacqueline 209  
ROMSEY ART GROUP 92  
ROMSEY PAINT & CLAY 97  
ROSE, Charlotte 139  
ROUSSEAU, Barbara 52  
ROYLE, Marion 62  
RUBIRA, Sue 239  
RUBY & JACK DESIGN 162  
RUSHES ROAD CREATIVES 197  
RUSSELL, Bruce 186  
RUSSELL, Phil 197

SALISBURY ART SCENE 154  
SANDALL, Kev 101  
SAUNDERS, Elizabeth 289  
SEAGER, Fiona 118  
SEAMAN, Gillian 246  
SEAVIEW ARTISANS 243

SEAVIEW STUDIO 243  
SELDON, Keith 13  
SEY, Eileen 51  
SEY, Peter 51  
SEYMOUR, Emma 177  
SHAPLAND, George 3  
SHARD, Elizabeth 179  
SHARP, Vanessa 62  
SHIELDS, Caroline 267  
SILL, Helen 197  
SILVERSNAIL PRINTS 162  
SIMMONS, Shandy 72  
SIMPSON, Consuelo 166  
SIMPSON, Jill 163  
SIMPSON, Phoebe 166  
SINGH, Kuljit 229  
SLATER, Martin 11  
SLK CERAMICS 243  
SMALL, David 209  
SMARTISTSTUDIO 248  
SMITH, Emily 144  
SMITH, Gillian 11  
SMITH, Jerry 204  
SMITH, Katie 162  
SMITH, Mandy 237  
SMITH, Mary E 64  
SNOOK, Debbie 250  
SOLENT ART SOCIETY 269  
SOPHIE & SUE 217  
SOUTHERN NATURE ART 283  
SOUTHWELL, Helen 3  
SPEAR, George 194  
SPEIGHT, Daphne 24  
SPENDER, Clare 40  
SPLINTERS 52  
SPRAGG, Joanna 188  
SPRING, Jane 86  
SPUDWORKS GALLERY 40  
STAPLEFORD, Chris 253  
STEPHENS, Pauline 29  
STEPHENS, Roger 9  
STEPHENSON, April 250  
STOPHER, Gill 52  
STORK, John 59  
STORM, Maggie 254  
STRANGE TIMESQUESTS 151  
STRANGE, Barbara 289  
STRAWBERRY FIELDS ART 164  
STUDIO 8 159

STUDIOZO GLASS 213  
SUNNY OUTSIDE 200  
SUNNYFIELDS ARTS 81  
SUTHERLAND, Sue 16  
SUTTON, Jenny 45  
SWANWICK STUDIO 251  
SYMES, Garry 37  
TAKE 10 ARTISTS 11  
TALLIS, Jocelyn 40  
TANNER, Liz 4  
TAYLOR, Marilyn 103  
THE ART BEATS 157  
THE ART POD COLLECTIVE 278  
THE BARN EMPORIUM 191  
THE COLOUR FACTORY 144  
THE CRAFT COLLECTIVE 168  
THE HILL HEAD GALLERY 258  
THE MONDAY PAINTERS 90  
THE WELSH WOODMAN 257  
THE YARD STUDIOS 146  
THEOBALD, Helen 57  
THOMAS, Bruce 270  
THOMAS, Rose 270  
THOMPSON, Jonathan 185  
THOMPSON, Sheila 52  
THOMSON, Krista 202  
THORPE, Jennifer 264  
TILLEY, Marianne 165  
TILLMAN, Anna L 280  
TIME AT THE BAR PLEASE 277  
TINKLER, Sue 152  
TOWNSEND, Karen 259

TRACEY, Paul 187  
TRATT, Richard 6  
TRUSCOTT, Robert 240  
TUBBS, Andrew 195

UDALL, Alison 195  
UNIT 11 229  
UNITY ART STUDIO 124

VAN HASSELT, Tessa 54  
VAN NIFTRIK, Syann 10  
VEREY, Vivien 106  
VERSEY, Angela 54  
VISUAL MARKS TEXTILE 289  
VIZE, Paula 120

WADE, Carol 144  
WAFER, Jane 53  
WAKEFIELD, Susan 253  
WALDRON, Jill 236  
WALKER, Grant 13  
WALKER, Lesley 89  
WALLER, Gill 167  
WALTHAM, Mary 181  
WARBEY, Judith 24  
WARD, Tracey 247  
WARSASH ART GROUP 245  
WARWICK, Jane 205  
WATERMARK 71  
WATERS, Sarah 40  
WATERSIDE GROUP 79  
WATKINS, Chris 94  
WAT'S ON GLASS 257  
WEILER, Kim 29  
WELLS, Sue 267  
WESSEX GUILD CRAFTSMEN 203  
WESSEX SCULPTORS 201  
WEST, Renate 113  
WHEAT, Janet 49  
WHELDON, Pete 137  
WHITBOURN, Barbara 192  
WHITE, Ed 229  
WHITE, Kirstin 240  
WHITTING, Virginia 11, 16  
WHITWORTH, Deirdre 11  
WILD ART GALLERY 207  
WILKIE, Tania 272  
WILLIAMS, Aylsa 237  
WILLIAMS, Jo 34  
WILLIAMS, Joanna 11  
WILLIAMS, Lauren 229  
WILLIAMS, Mary 49  
WILLIAMS, Sandy 55  
WILLIAMS, Shelagh 208  
WILLINGHAM, Joan 105  
WILLIS, Peter 86  
WILSON, Kirsty 21  
WILSON, Monica 3  
WILTHER, Claire 87  
WINCHESTER WTEG 220  
WINDELL, Alison 86  
WISEMAN, Angela 27  
WITCHARD, Jenny 250  
WOOD 'N' HORSE 29  
WOOD, CLAY, STONE, SILK 212  
WOOTTEEN, Gemma 143  
YADEGAR, Maria 192  
YELLOW EDGE GALLERY 277  
YOO NEE YAK DESIGNS 38  
YUKARI 9

ZERO NINE TEXTILES 4



[www.hampshireopenstudios.org.uk](http://www.hampshireopenstudios.org.uk)

